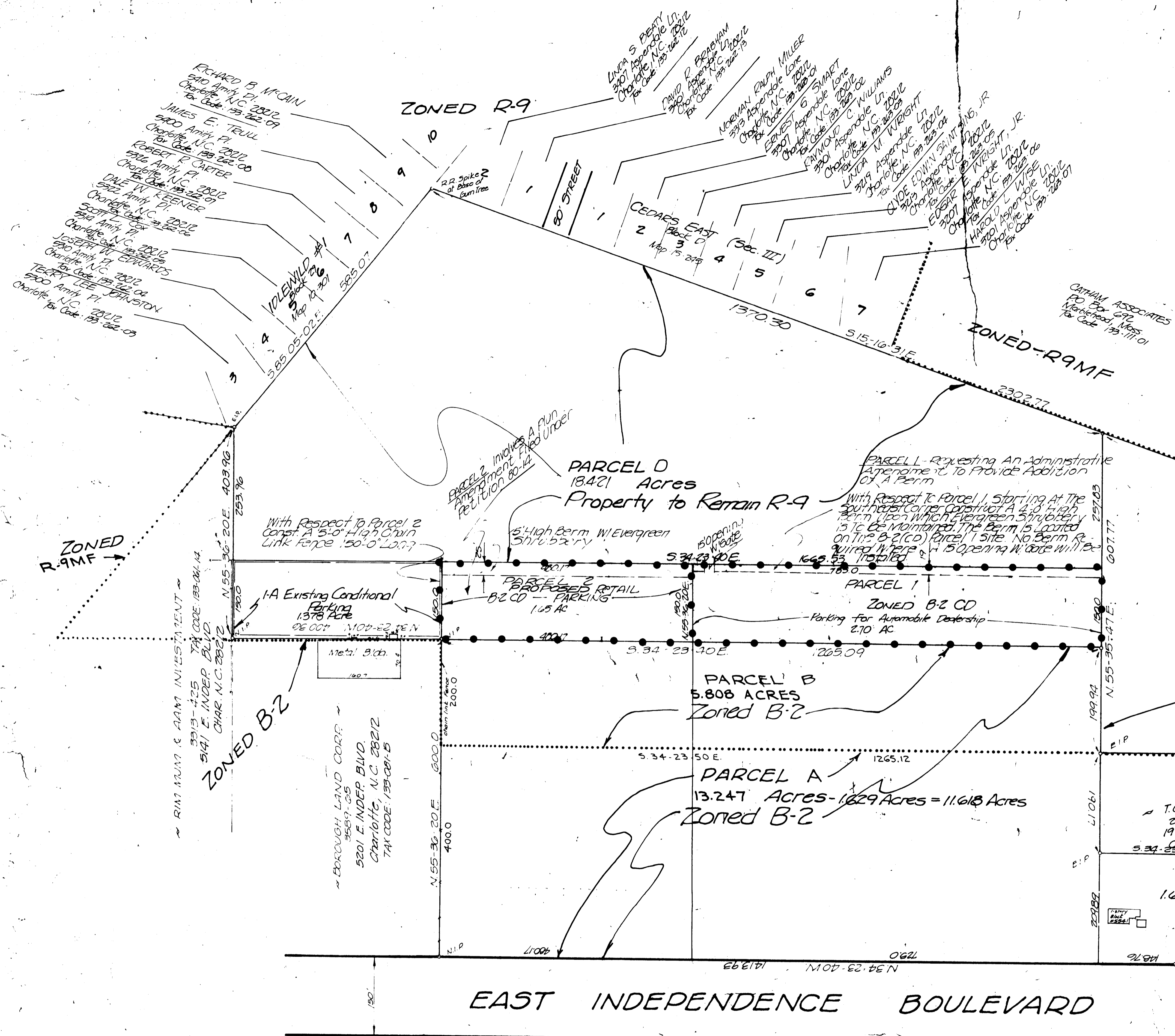
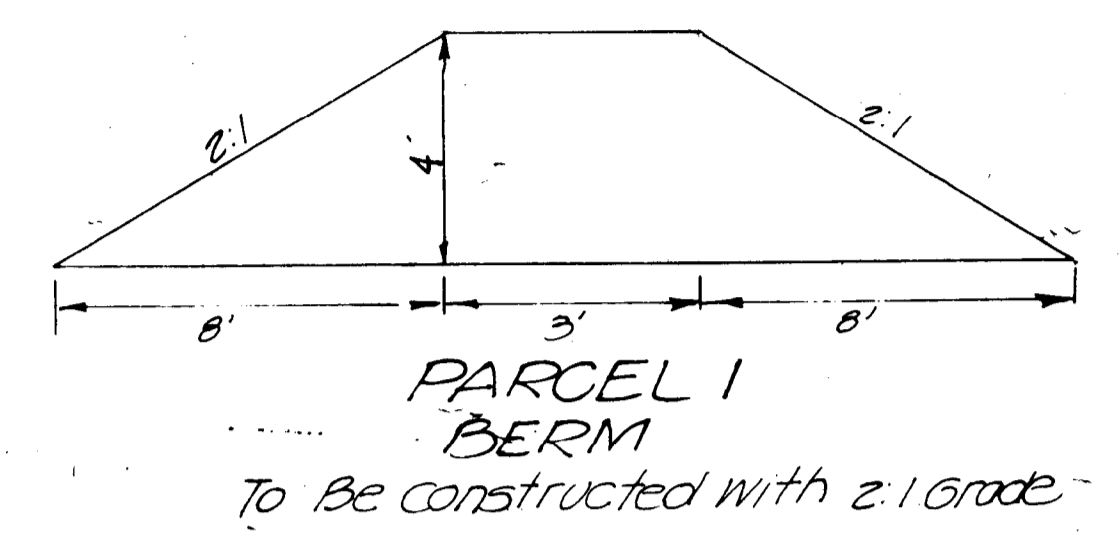
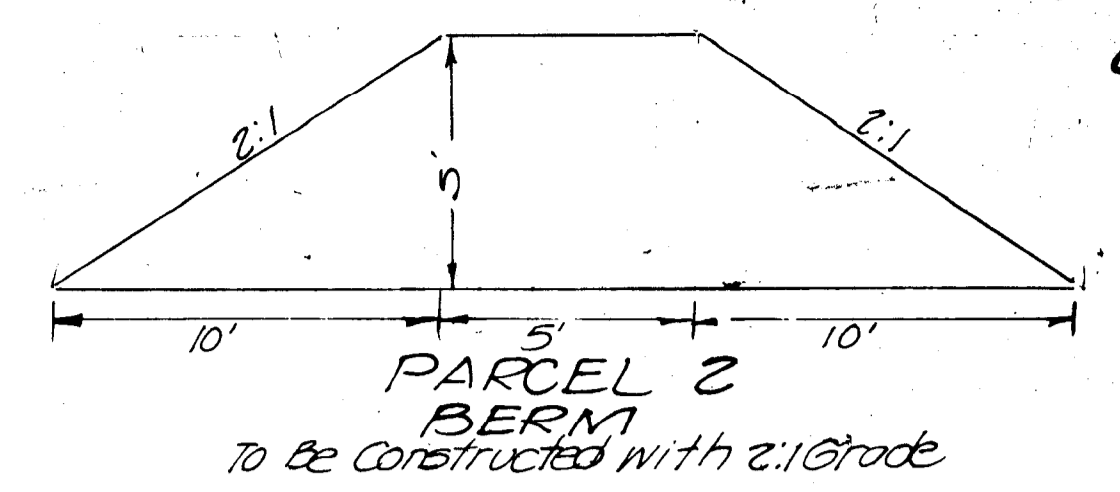


As approved by City Council  
4/2/00

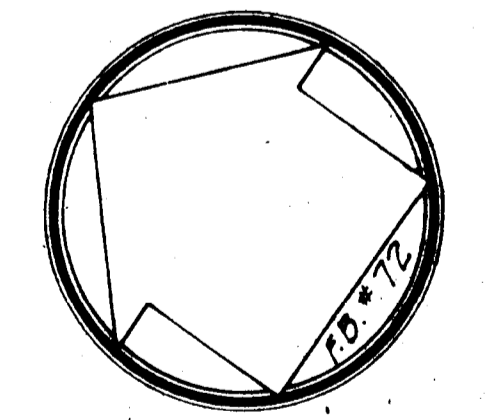


FDI PARTNERS  
Joni F. Parker  
170 Via Esplanade  
Clementon, Calif. 91111  
Tax Code 133-111-02

CITIZEN ASSOCIATES  
120 Box 572  
Waltham, Mass.  
Tax Code 133-111-01

T.G. Stegall  
2458-091  
1931 WOODBERRY RD.  
Charlotte, N.C. 28212  
Tax Code: 133-081-13  
460.61

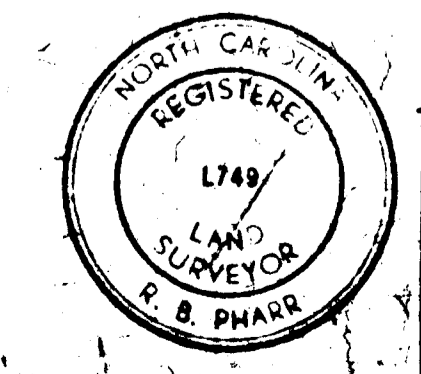
EAST MEALENEBURG CORPORATION ET AL  
511 WINGSTON DRIVE  
CHARLOTTE, N.C.



With Respect to Parcel 2  
The screening requirement imposed by  
the provisions of Section 23-56 of  
the Charlotte Zoning Ordinance  
must be met.

LIMITATIONS OF USES ON PARCEL 2  
B-2 Uses limited to parking of motor vehicles

Plot # 80-14  
Bruton Smith



REVISIONS

May 3, 1978	Date: April 1978
July 27, 1978	Scale: 1"=100'
July 14, 1978	March 4, 1980 165AC
Aug 15, 1978	July 16, 1980 BERM Location
Oct 17, 1978	June 17, 1980 BERM Detail
Dec 11, 1978	
Feb 27, 1978	1.629 AC. TPOC

Schematic Zoning Plan  
REZONING MAP  
SURVEY FOR  
BRUTON SMITH  
CHARLOTTE, N.C.  
by: R.B. PHARR & ASSOC.  
N.C.R.L.S.