

**DEVELOPMENT STANDARDS**

MINIMUM LOT SIZE 6000 SQ. FT.  
 MINIMUM LOT FRONT SETBACK 15'  
 MINIMUM REAR SETBACK FROM ADJACENT STREET 15'  
 MINIMUM SIDE YARD SETBACK FROM ADJACENT LOT LINES 15'  
 OR ZERO LOT LINE AND 15'  
 THREE PARKING SPACES PROVIDED FOR EACH UNIT  
 (OPTIONAL ONE SPACE IN GARAGE AND TWO OUT)

NOTE: INTERIOR STREETS ARE TO BE PRIVATE WITH MAINTENANCE RESPONSIBILITY TO BE ASSUMED BY THE HOMEOWNERS ASSOCIATION OF THE DEVELOPER  
 ALL SPACES ARE POTENTIAL HOMEOWNERS OF THIS FACT

**SITE DATA: CLUSTER HOUSING**

TOTAL ACRES: 14.90  
 TOTAL UNITS: 63  
 D.U./S/AC: 4.23  
 EXISTING ZONING R-15 MF CD  
 PROPOSED ZONING R-20 MF  
 NOTE: REZONING COSTS IS FOR THIS 14.90 ACRE PARCEL OF CLUSTER HOUSING ONLY

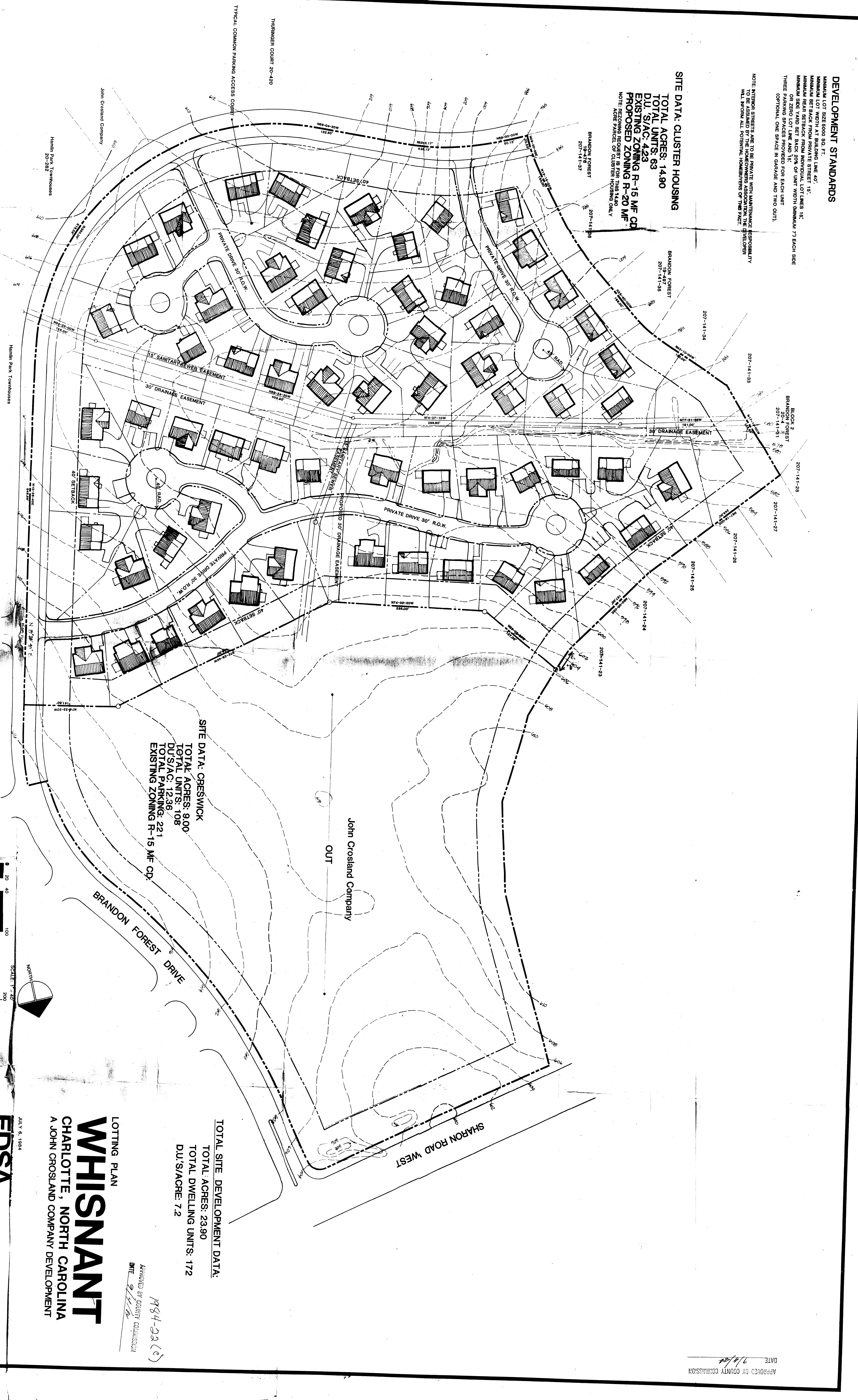
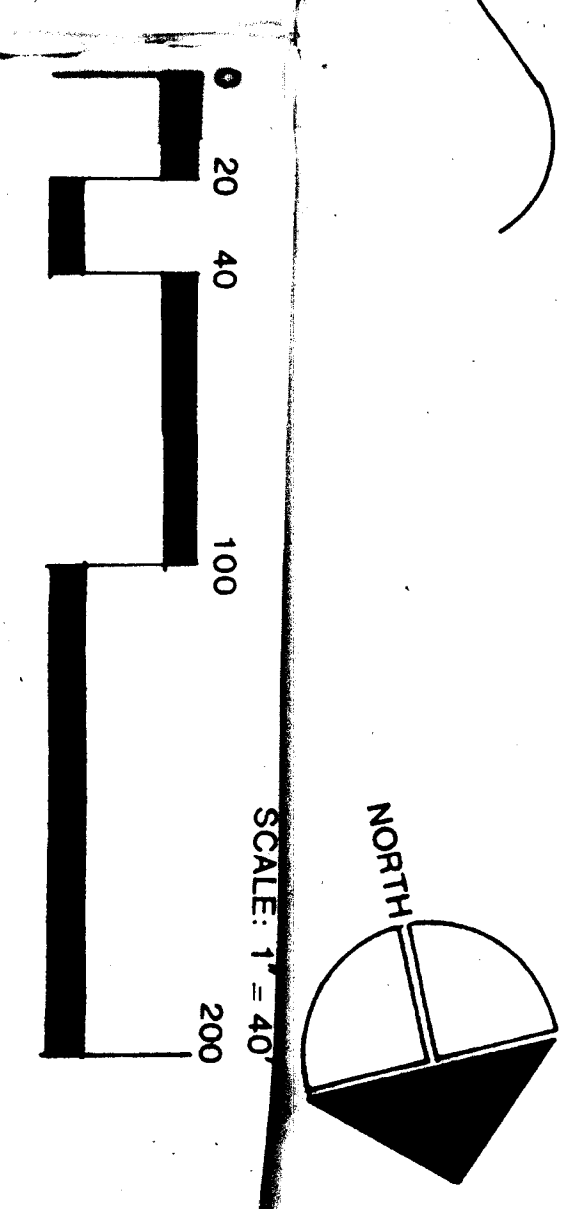
**SITE DATA: CRESWICK**  
 TOTAL ACRES: 9.00  
 TOTAL UNITS: 108  
 D.U./S/AC: 12.36  
 TOTAL PARKING: 221  
 EXISTING ZONING R-15 MF CD

**TOTAL SITE DEVELOPMENT DATA:**  
 TOTAL ACRES: 23.90  
 TOTAL DWELLING UNITS: 172  
 D.U./S/ACRE: 7.2

LOTGING PLAN  
**WHISNANT**  
 CHARLOTTE, NORTH CAROLINA  
 A JOHN CROSLAND COMPANY DEVELOPMENT

APPROVED BY COUNTY COMMISSION  
 DATE 7/1/84

APPROVED BY COUNTY COMMISSION  
 DATE 7/1/84



JULY 6, 1984  
**EDSA**  
 Planning and Land Development  
 P.O. Box 837, Wilmington, NC 28401  
 REV. 7-20-84