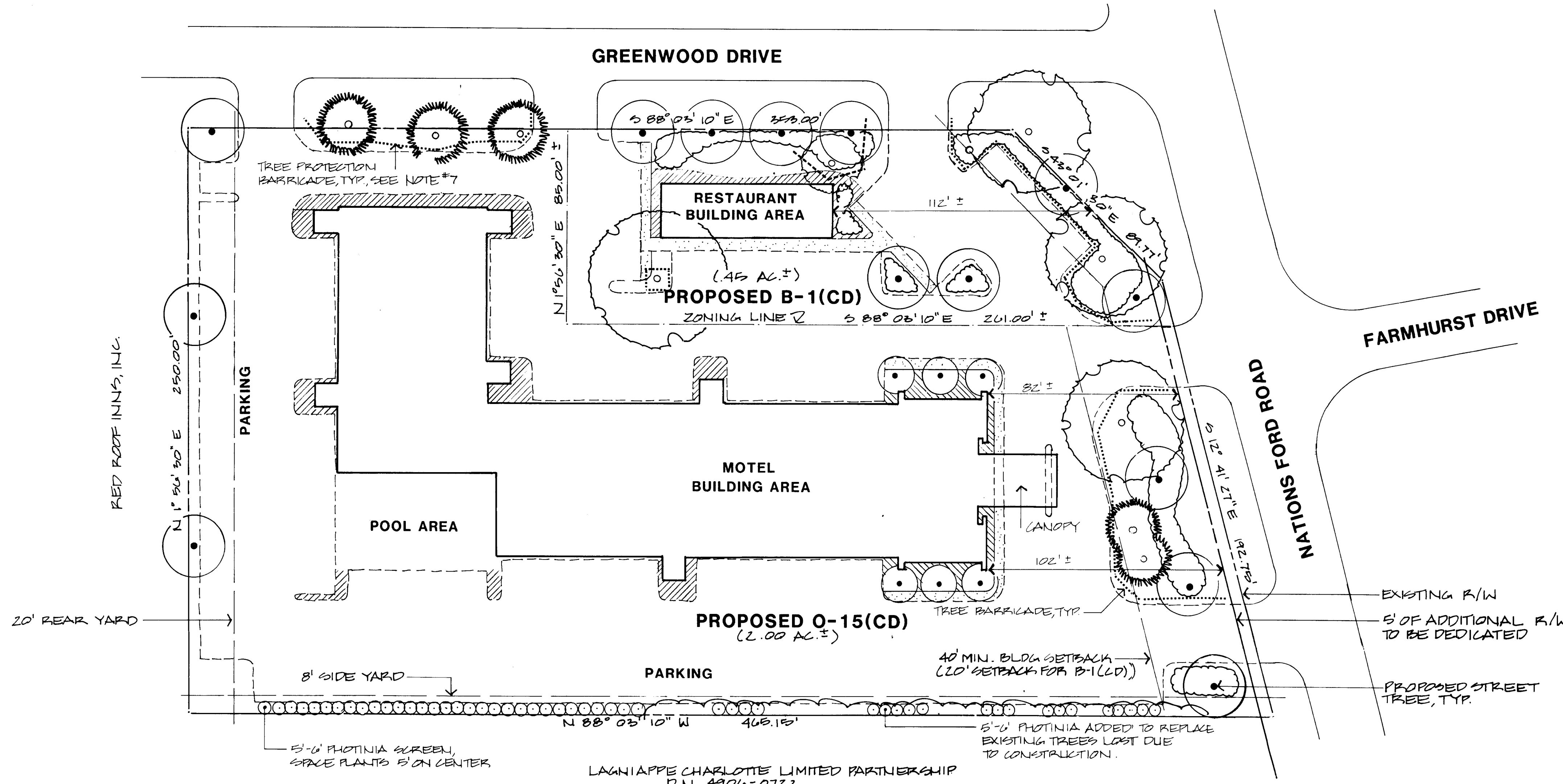


**PARKING:**

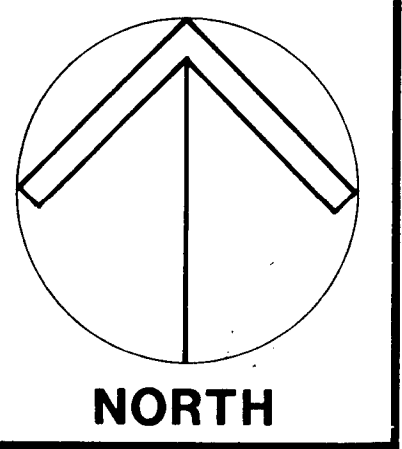
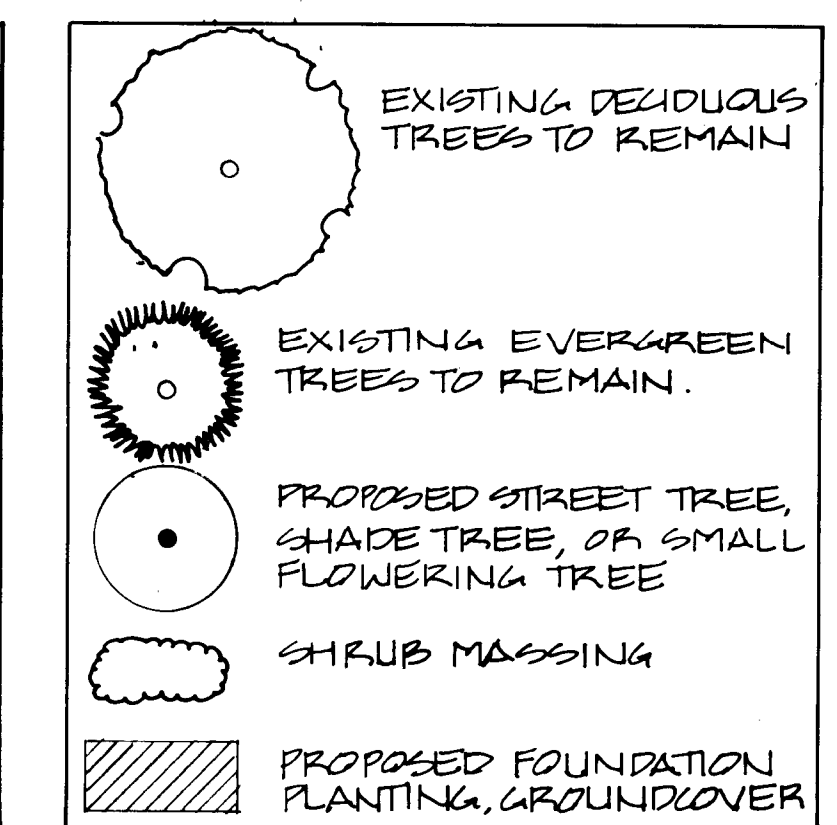
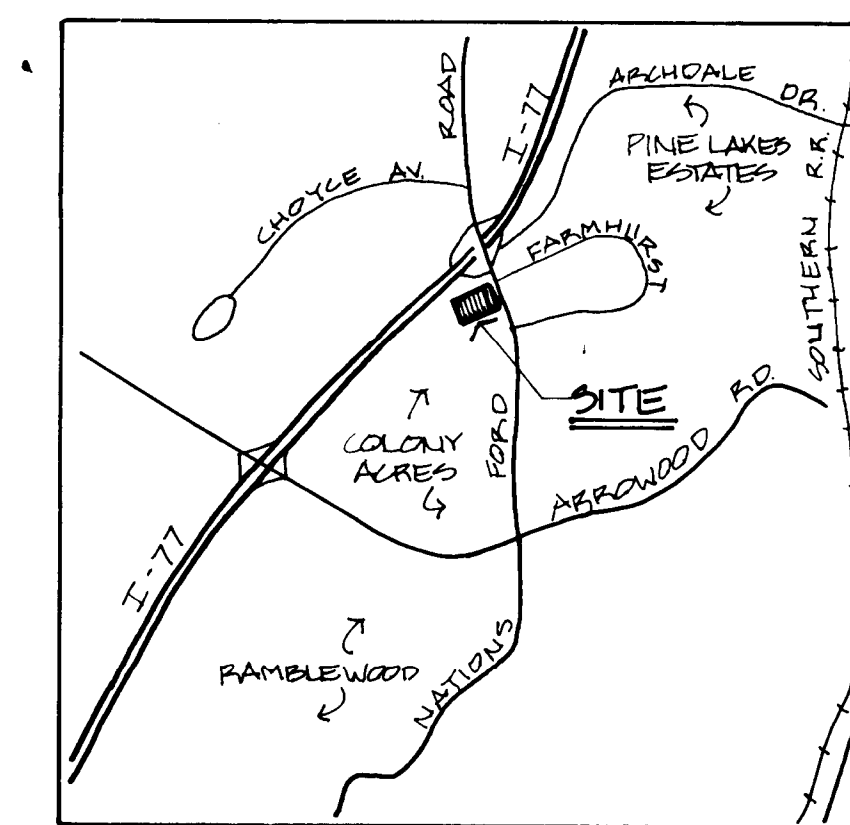
	RESTAURANT B-1 (CD)	MOTEL O-15 (CD)
# OF SPACES REQUIRED	51 SEATS @ 3/SEAT = 17 EMPLOYEES = 2 <b>19</b>	118 ROOMS @ 1/ROOM = 118 EMPLOYEES = 5 <b>123</b>
# OF SPACES PROVIDED	(INCLUDES 2 H/C) <b>28</b>	(INCLUDES 3 H/C) <b>125</b>

**NOTES:**

1. PARKING, SIGNAGE, SCREENING, AND STORMWATER DETENTION WILL BE PROVIDED IN ACCORDANCE WITH ORDINANCE REQUIREMENTS.
2. MAXIMUM NUMBER OF MOTEL ROOMS = 118.
3. USES WILL BE CONFINED TO MOTEL AND RESTAURANT WITH SERVICE AND ACCESSORY STRUCTURES CUSTOMARILY ASSOCIATED WITH SUCH USES.
4. SITE ACREAGE = 2.448 AC.
5. BOUNDARY SURVEY BY HUGH E. WHITE, JR., NCRLS #L-2646, DATED 2-1-85.
6. SIGNAGE WILL BE PROVIDED PER CITY OF CHARLOTTE STANDARD REGULATIONS FOR SIGNS IN O-15 DISTRICTS. (INCLUDING B1(CD) SITE).
7. PLANTING PLAN IS TO INDICATE DESIGN INTENT ONLY. EXACT LOCATIONS MAY VARY TO ACCOMMODATE SITE CONSTRUCTION. TREE BARRICADE CONSTRUCTED OF 2x4 POSTS AND RAILS TO A HEIGHT OF 3 FEET SHALL BE PLACED IN LOCATION SHOWN ON PLAN PRIOR TO ANY CLEARING OR GRADING AND SHALL BE MAINTAINED THROUGHOUT CONSTRUCTION.



APPROVED BY CITY COUNCIL  
DATE 8-19-85



L995.32

Project Manager	LRM
Drawn By	WCT
Checked By	LRM
Date	2-20-85
Project Number	85018

Revisions	5-9-85; ADDED PARKING DATA; REVISED R/W PER CITY REVIEW
	5-15-85; ADDED NOTE #6
	6-6-85; ADDED NOTE #7, ADDED TREES TO REMAIN, PROPOSED TREES, SHRUB MASSING AND GROUNDCOVER; REVISED SITE ENTRY TO ACCOMMODATE O-15 REQUIRED 40' MIN. BLDG. SETBACK; ADDED APPROX BLDG. SETBACK DIMENSIONS.
	6-13-85; REVISED NOTE #6 TO LIMIT ALLOWABLE SIGNAGE.

**DPR ASSOCIATES**  
Landscape Architects  
Design • Planning • Research  
2036 East Seventh Street  
Charlotte, NC 28204  
704/332-1204

**ZONING PLAN**

**LA QUINTA MOTOR INNS**

Scale	1" = 30'
Sheet Number	<b>Z-1</b>
Of	Total