



* 0 0 B R E A K 0 0 *



**ADVANCED
IMAGING
SYSTEMS**

An Information
Management Company

www.aisimc.com

City of Charlotte – Planning Dept. Scanning Rezoning Files

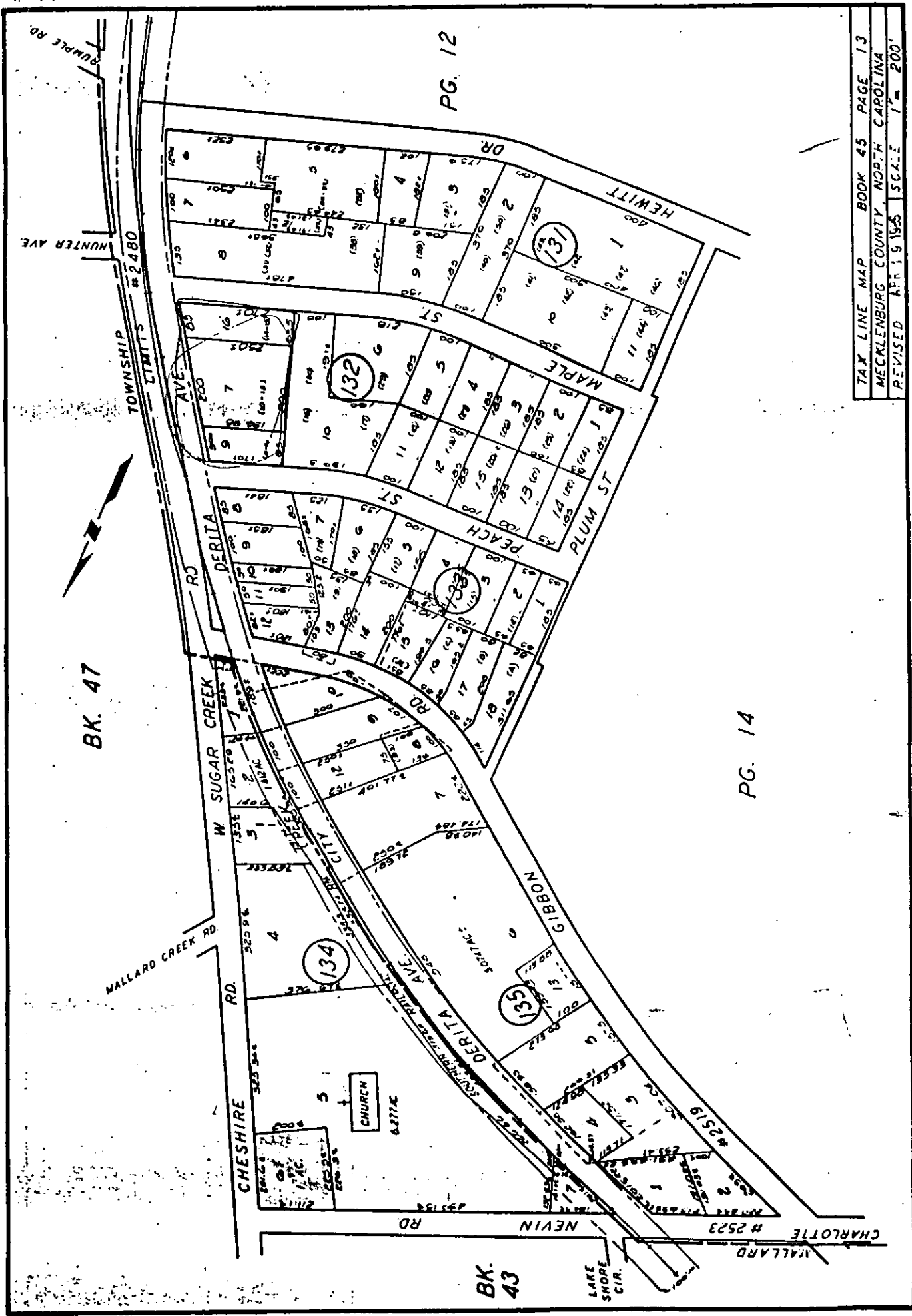
Petition # _____

Document type:

- Applications
- Correspondence
- Department Comments
- Land Use Consistency
 - Mail Info
 - Mapping
 - Other
- Site Plans



* 0 0 B R E A K 0 0 *



PG. 12

PG. 14

TAX LINE MAP BOOK 45 PAGE 13
 MECKLENBURG COUNTY, NORTH CAROLINA
 REVISED APR 19 1955 SCALE 1" = 200'

BK. 47

BK. 43

2/B R-9MF to O-C

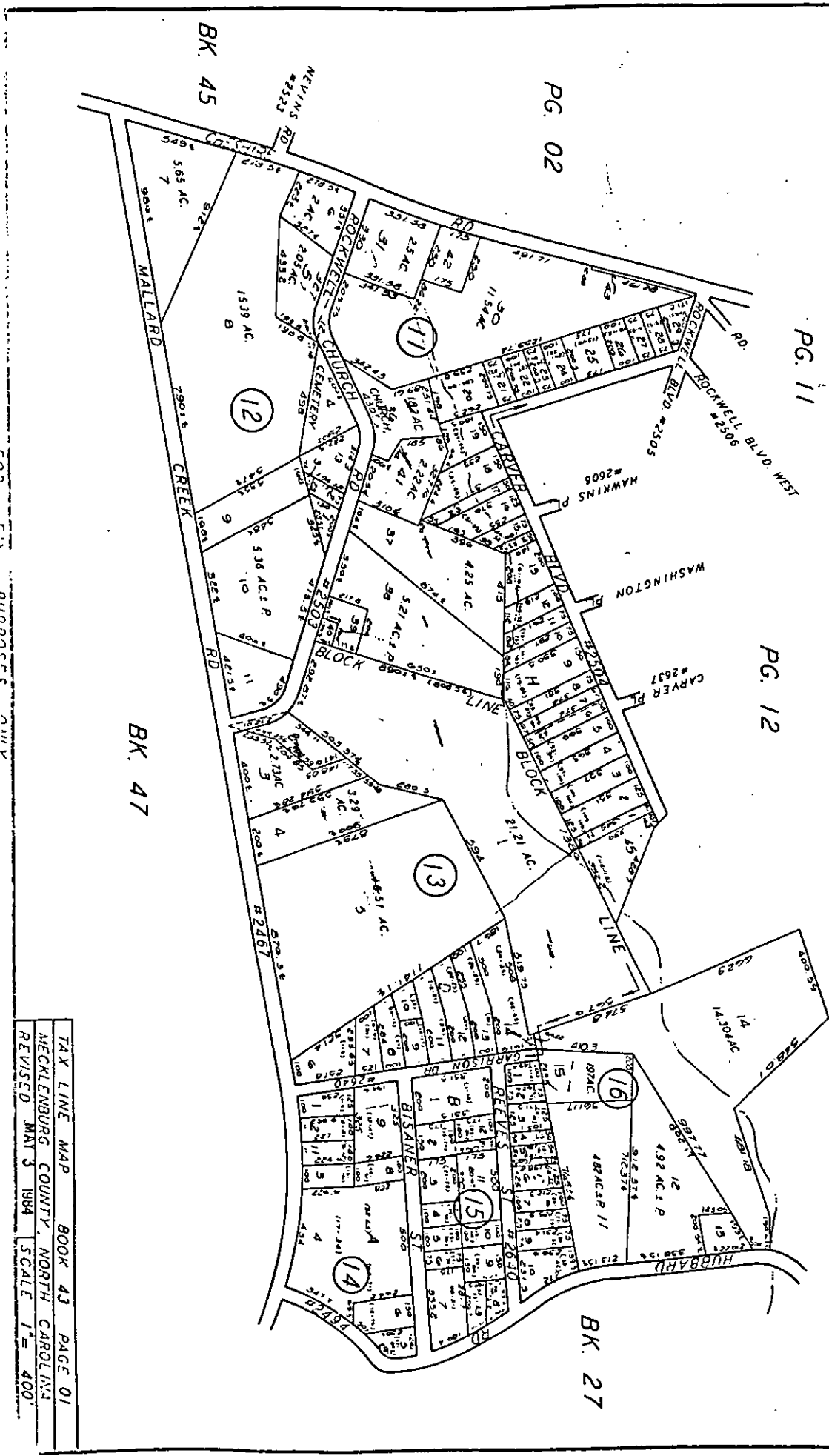
Page - 19

T 5500
Z 242

PG. 11

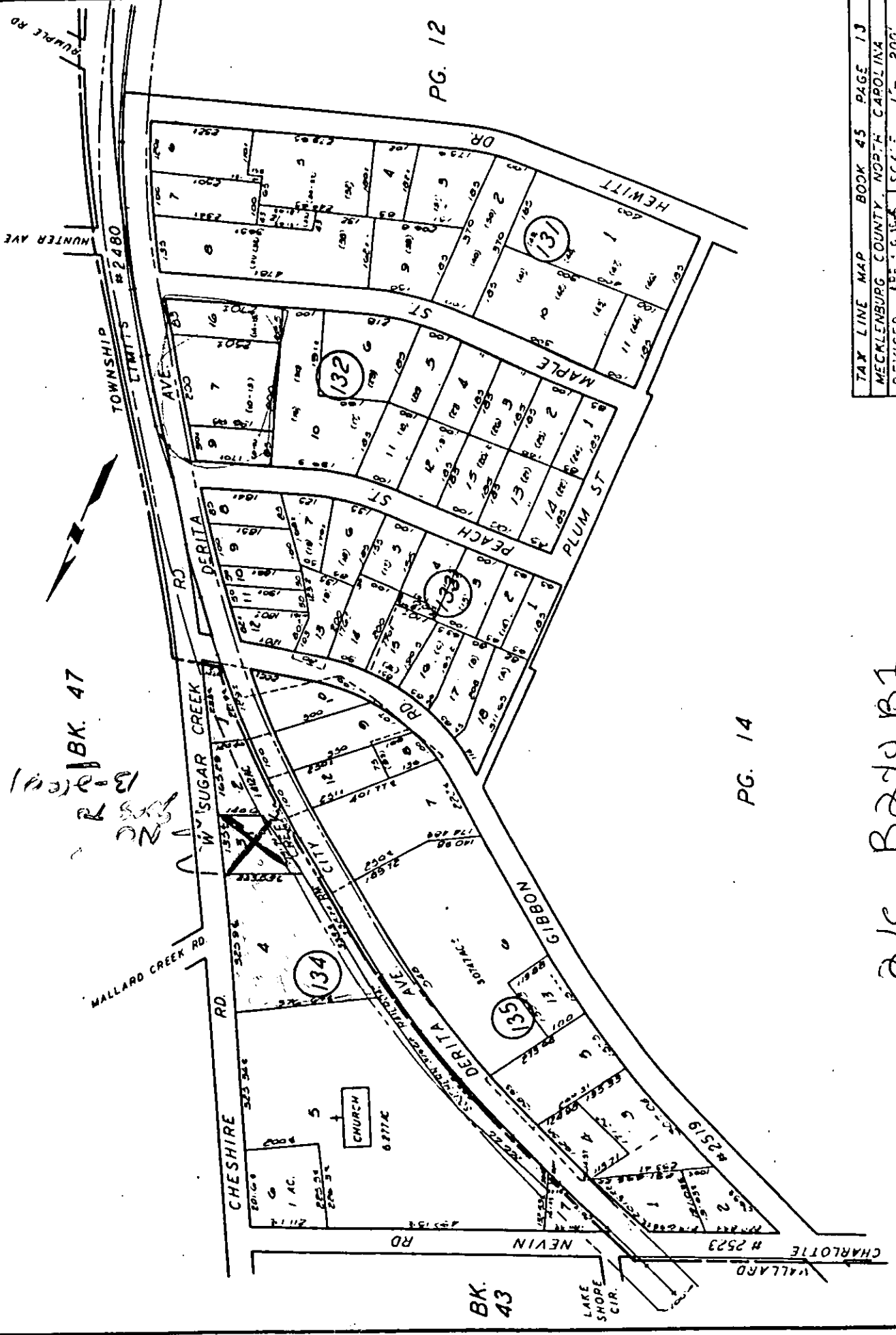
PG. 12

PG. 10



TAX LINE MAP	BOOK 43	PAGE 01
MECKLENBURG COUNTY, NORTH CAROLINA		
REVISED	MAY 3 1984	SCALE 1" = 400'

2/c B-2 to B-1
 Parcel
 2 of 3 maps
 86-0116



BK. 47
 2-2-2001
 13-2-2001
 2-2-2001

PG. 12

PG. 14

BK. 43

TAX LINE MAP	BOOK 45	PAGE 13
MECKLENBURG COUNTY, NORTH CAROLINA		
REVISED	APR 19 1955	SCALE 1" = 200'

a/c B240187
 20F3

R-9

R-9MF

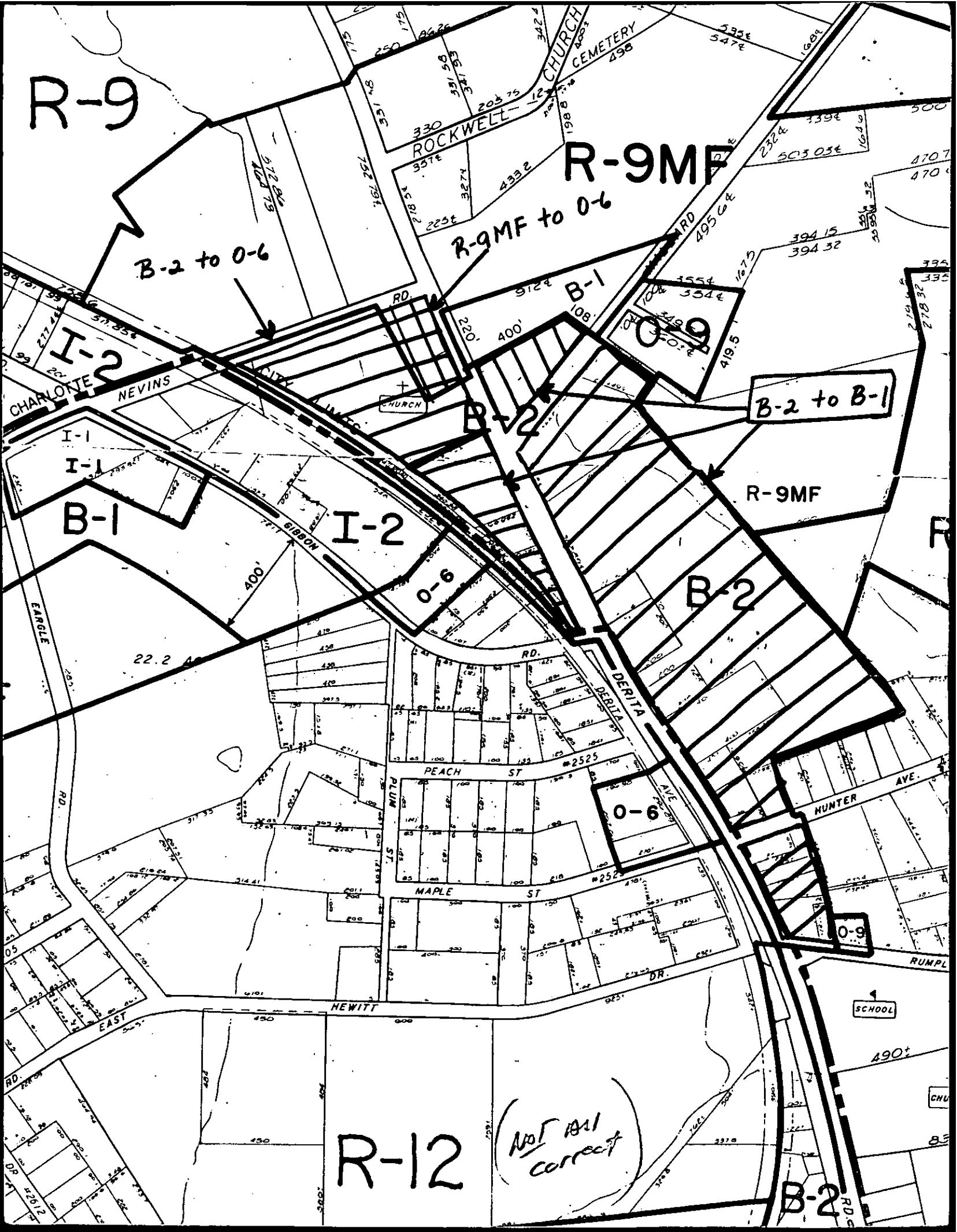
B-2 to O-6

R-9MF to O-6

B-2 to B-1

R-12

(NOT ALL correct)



86-21(c)

R-2

R-15

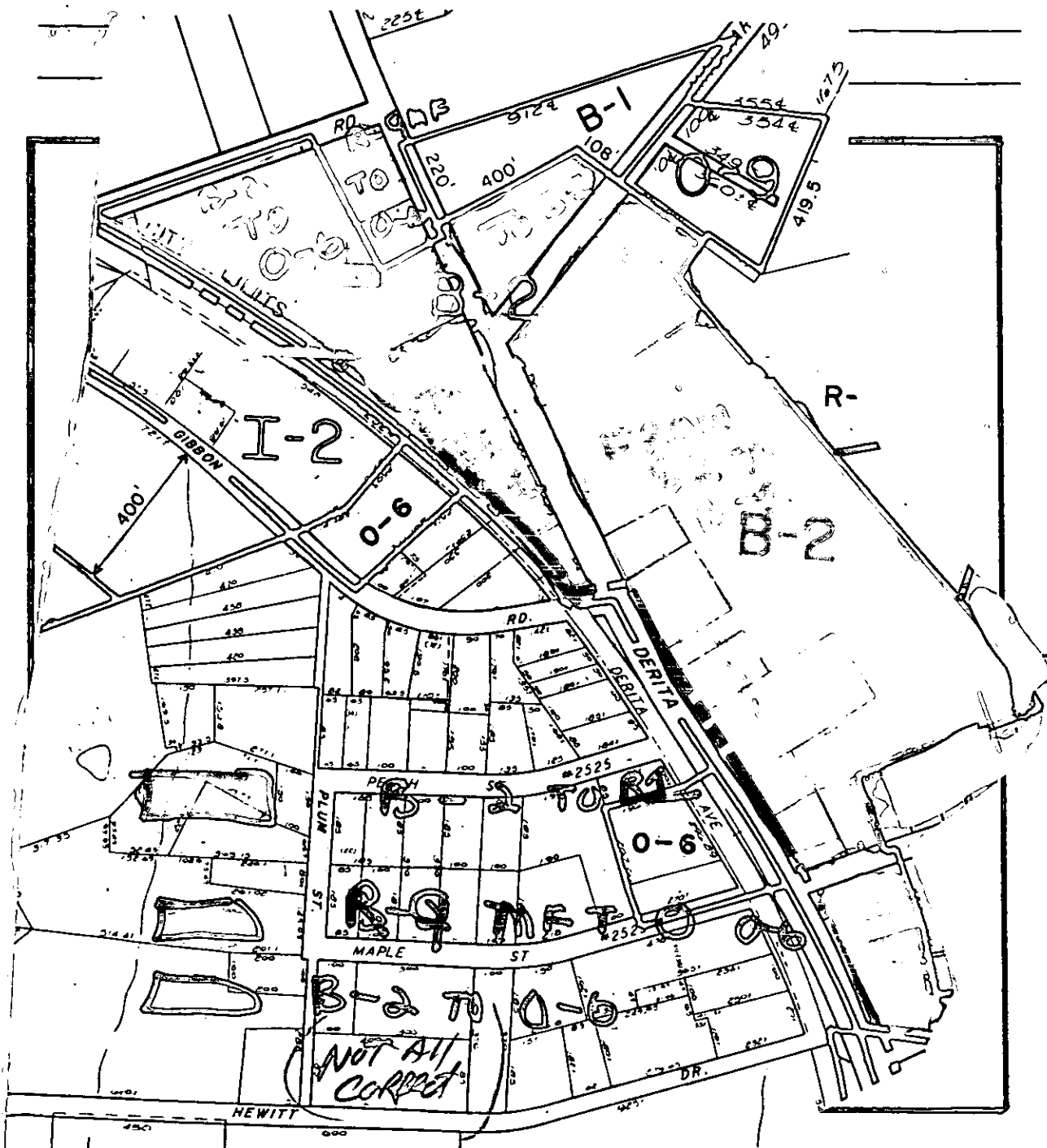
PETITIONER Charlotte-Mecklenburg Planning Commission

PETITION NO. 86-21(c)

HEARING DATE 4-14-86

ZONING CLASSIFICATION, EXISTING B-2, R-9MF REQUESTED B-1, O-6

LOCATION A 41 acre site located along Derita Avenue and Gibbon Road



ZONING MAP NO. 59, 70

SCALE 1" = 400'

PROPERTY PROPOSED FOR CHANGE



