



\* 0 0 B R E A K 0 0 \*



**ADVANCED  
IMAGING  
SYSTEMS**

www.aisimc.com

An Information  
Management Company

# City of Charlotte – Planning Dept. Scanning Rezoning Files

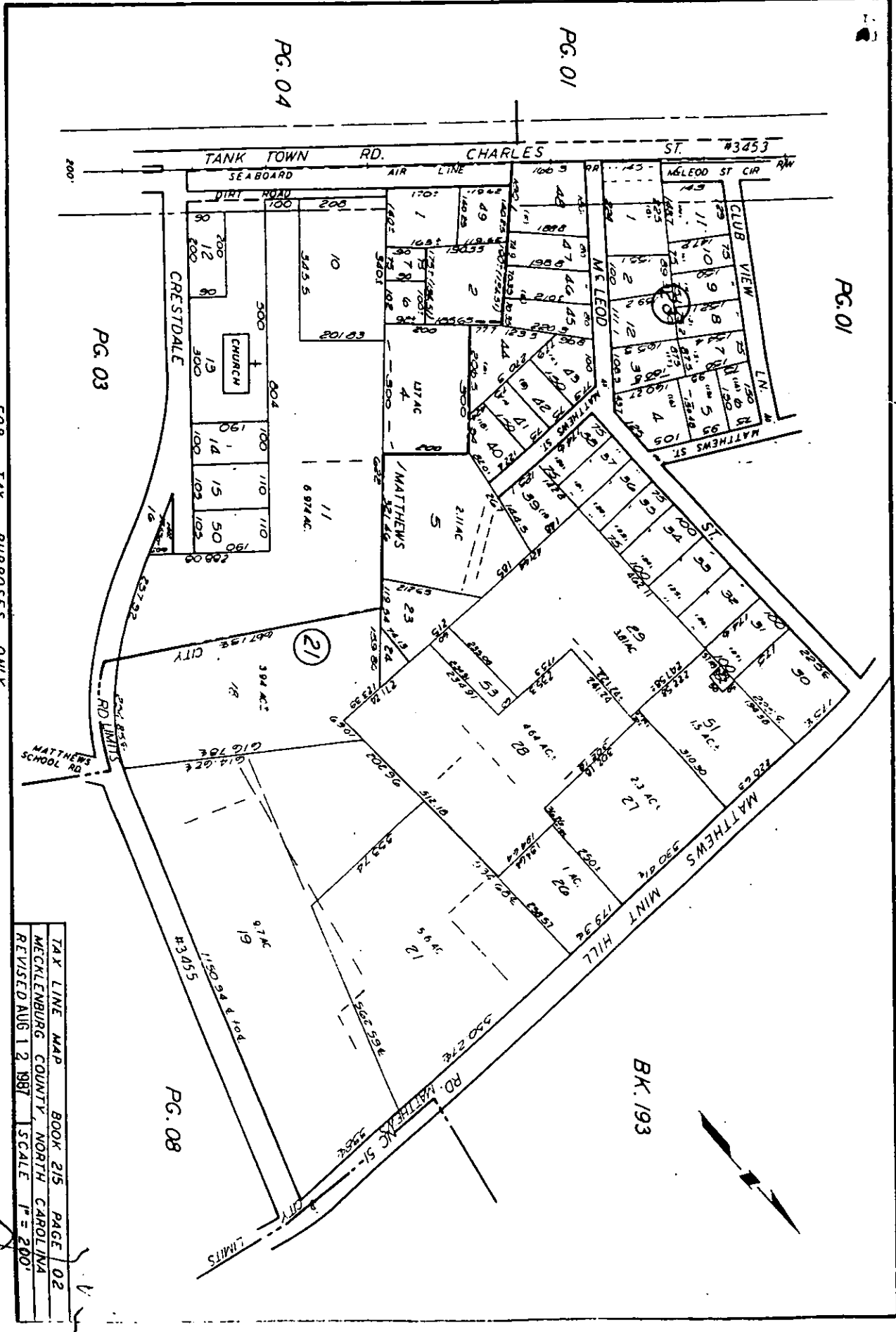
Petition # \_\_\_\_\_

## Document type:

- Applications
- Correspondence
- Department Comments
- Land Use Consistency
  - Mail Info
  - Mapping
  - Other
- Site Plans



\* 0 0 B R E A K 0 0 \*



TAX LINE MAP BOOK 215 PAGE 02  
 WICKLENBURG COUNTY, NORTH CAROLINA  
 REVISED AUG 12, 1987 SCALE 1" = 200'

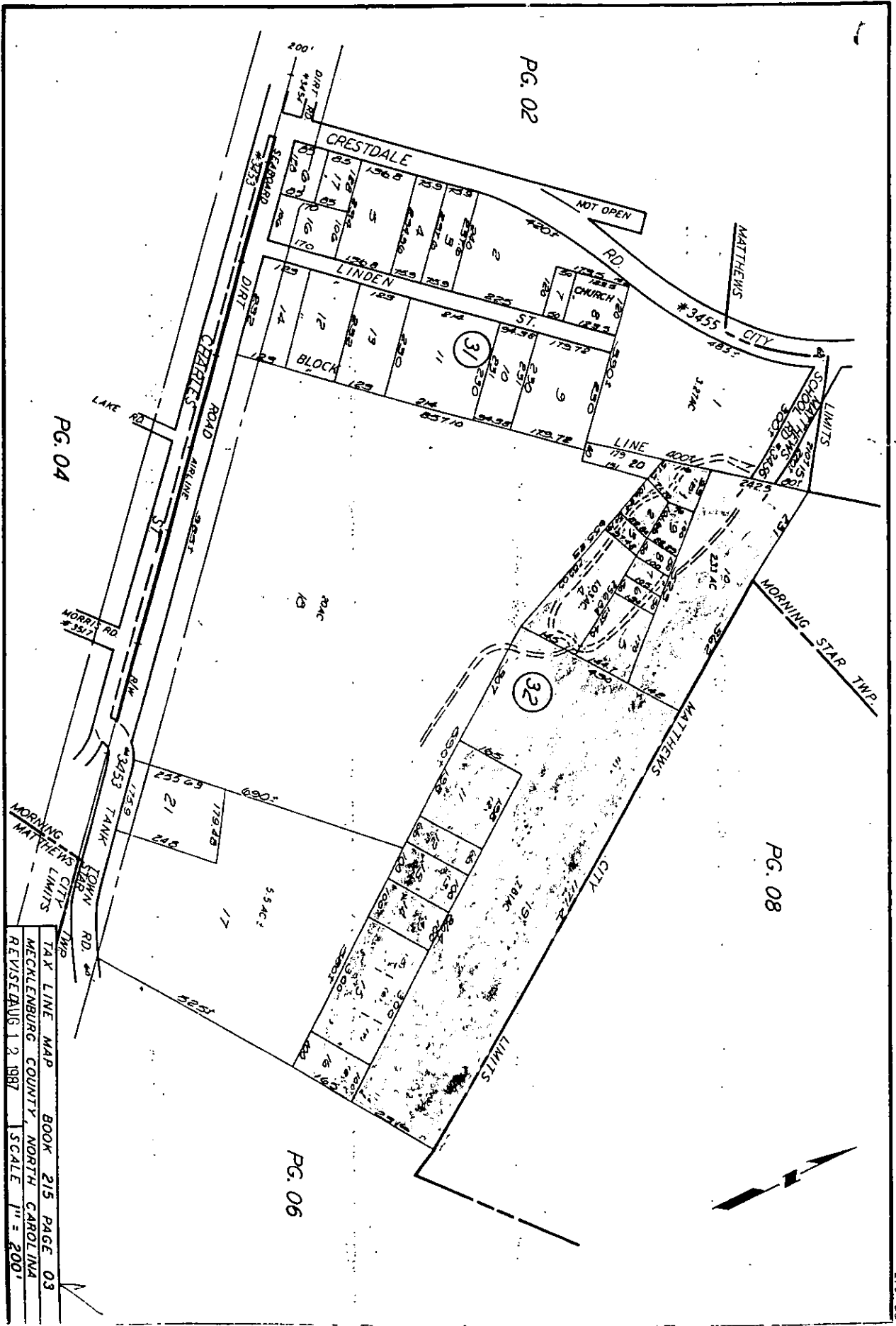
REZONE FROM R-12 TO R-9

CRESTDALE #1

P182

FOR TAX PURPOSES ONLY





TAX LINE MAP BOOK 215 PAGE 03  
 MECKLENBURG COUNTY, NORTH CAROLINA  
 REVISION AUG 12, 1987 SCALE 1" = 200'

FOR TAX PURPOSES ONLY

☐ - REZONE FROM R-12 TO R-9

▣ - REZONE FROM R-12MF TO R-9

CRESTDALE #1

P 2.82

MATTHEWS - MINT HILL RD.

REZONE FROM R-12 TO R-9

I-2

I-1

REZONE FROM R-12MF TO R-9

MATTHEWS  
20 AC

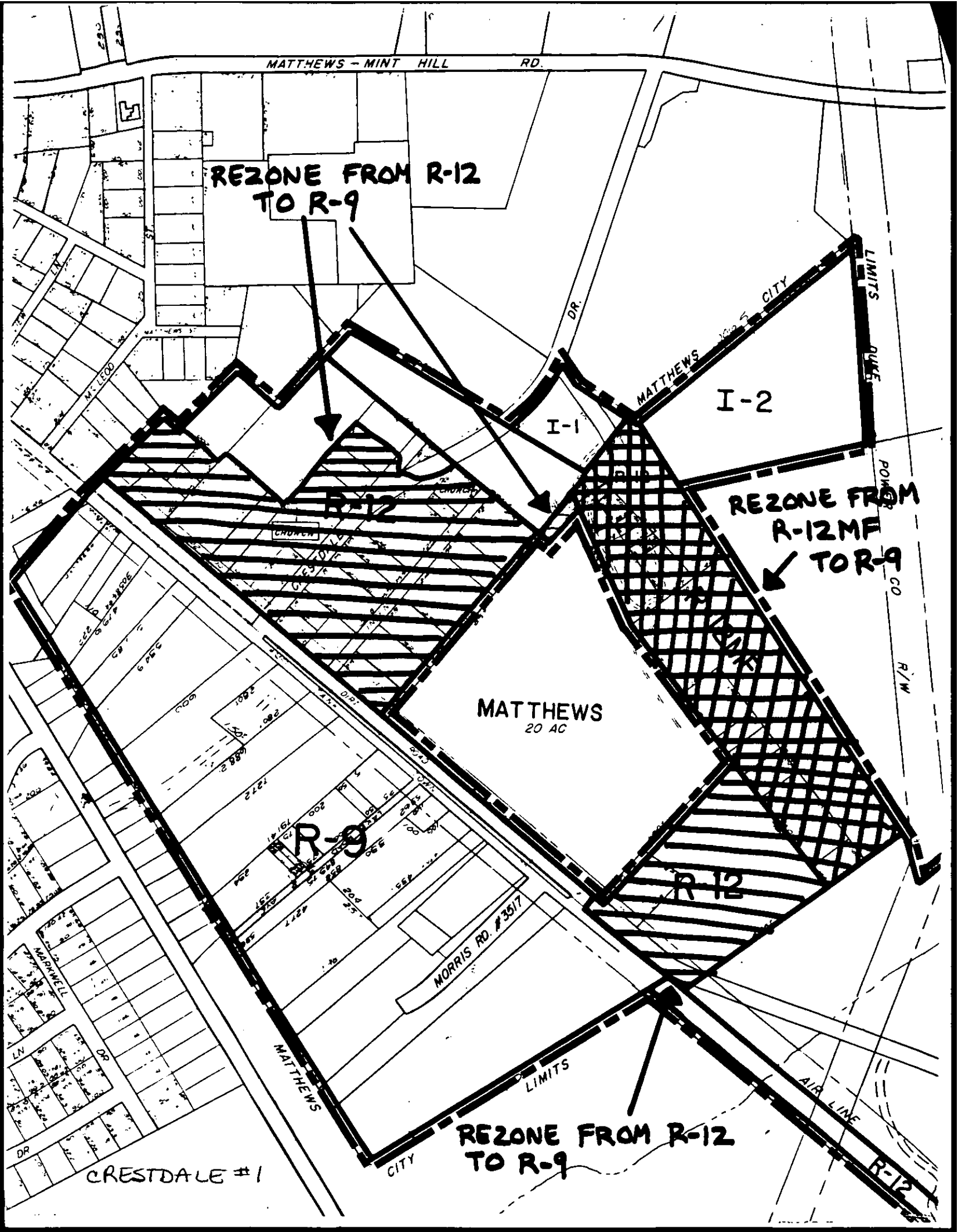
R-9

R-12

MORRIS RD. #3517

REZONE FROM R-12 TO R-9

CRESTDALE #1



APPROVED BY COUNTY COMMISSION  
DATE 8/15/88

COUNTY ZONE CHANGE

Petition No. 88-41(c)  
Charlotte-Mecklenburg  
Planning Commission

ZONING REGULATIONS  
MAP AMENDMENT NO.

575

A RESOLUTION AMENDING THE  
MECKLENBURG COUNTY ZONING  
REGULATIONS

BE IT RESOLVED BY THE BOARD OF COMMISSIONERS OF MECKLENBURG COUNTY,  
NORTH CAROLINA:

Section 1. The Mecklenburg County Zoning Regulations as embodied in the Zoning Ordinance are hereby amended by changing from R-12 and R-12MF to R-9 on the Official Zoning Map, Mecklenburg County, North Carolina the following described property:

Section 2. That this ordinance shall become effective upon its adoption.

APPROVED AS TO FORM:

\_\_\_\_\_  
County Attorney

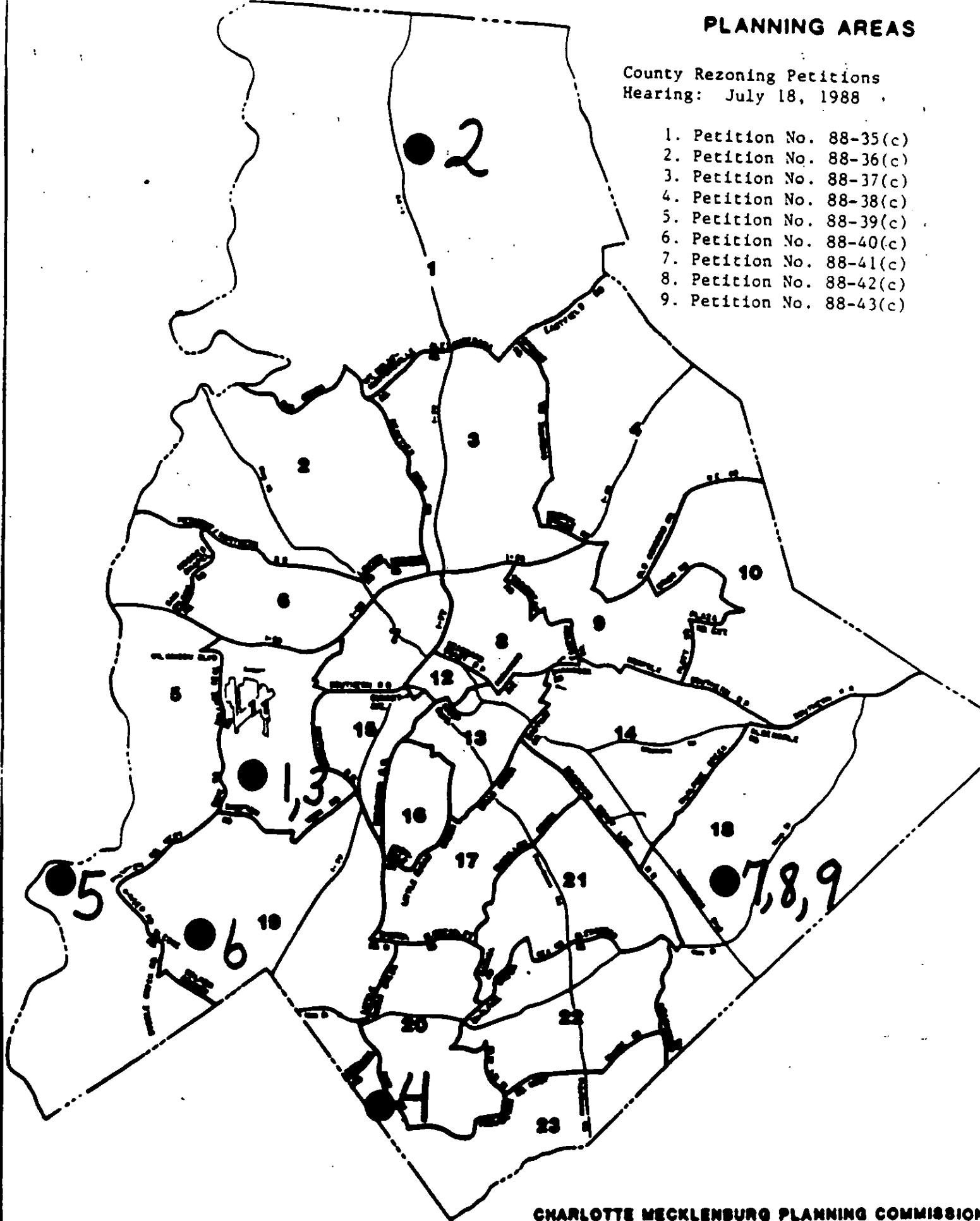
Approved and adopted by the Board of County Commissioners of Mecklenburg County, North Carolina, in meeting on the \_\_\_\_\_ day of \_\_\_\_\_, 19 \_\_\_\_.

\_\_\_\_\_  
Clerk, Board of County Commissioners

# PLANNING AREAS

County Rezoning Petitions  
Hearing: July 18, 1988

1. Petition No. 88-35(c)
2. Petition No. 88-36(c)
3. Petition No. 88-37(c)
4. Petition No. 88-38(c)
5. Petition No. 88-39(c)
6. Petition No. 88-40(c)
7. Petition No. 88-41(c)
8. Petition No. 88-42(c)
9. Petition No. 88-43(c)



CHARLOTTE MECKLEBURG PLANNING COMMISSION

April 1988