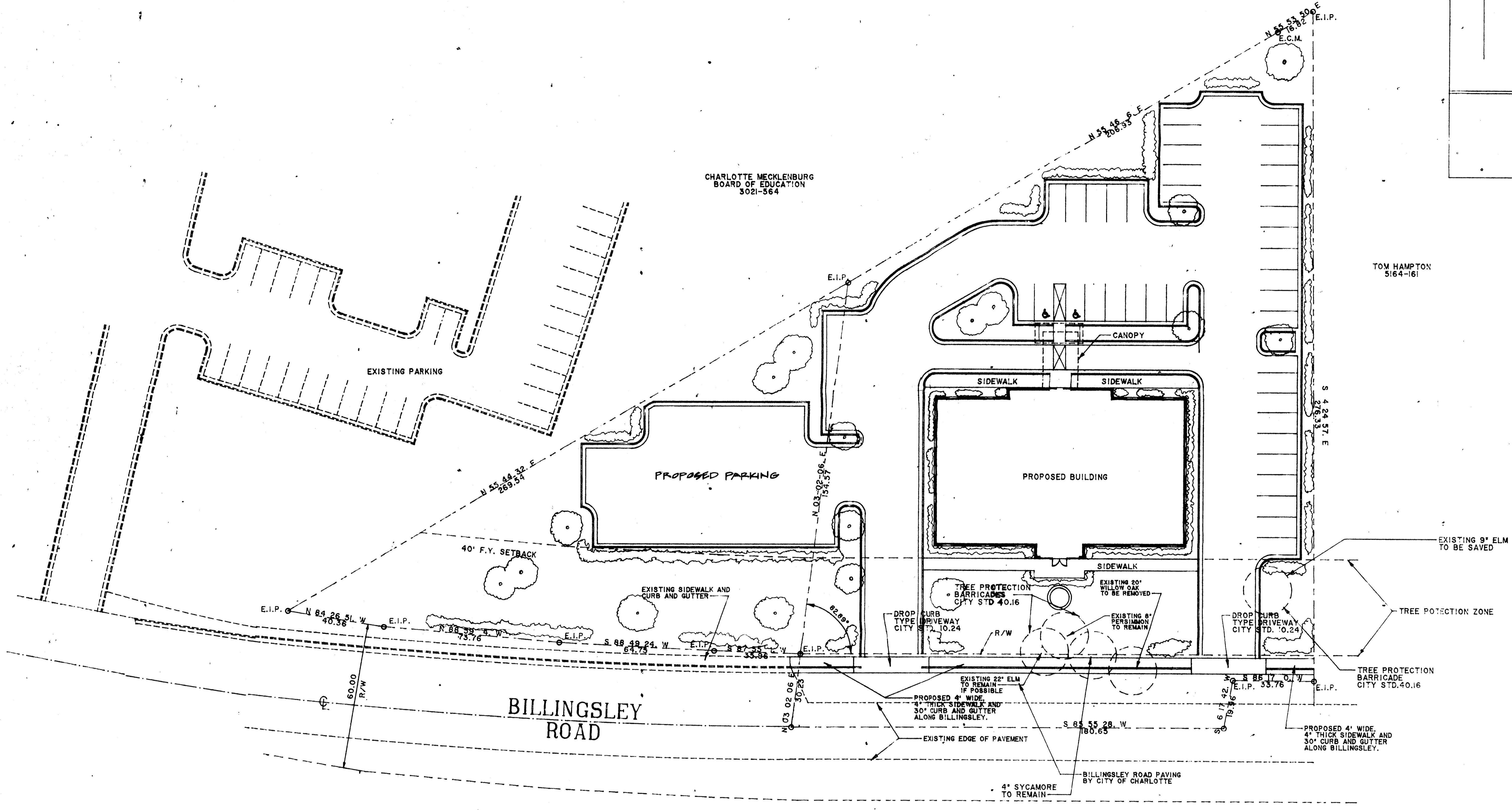
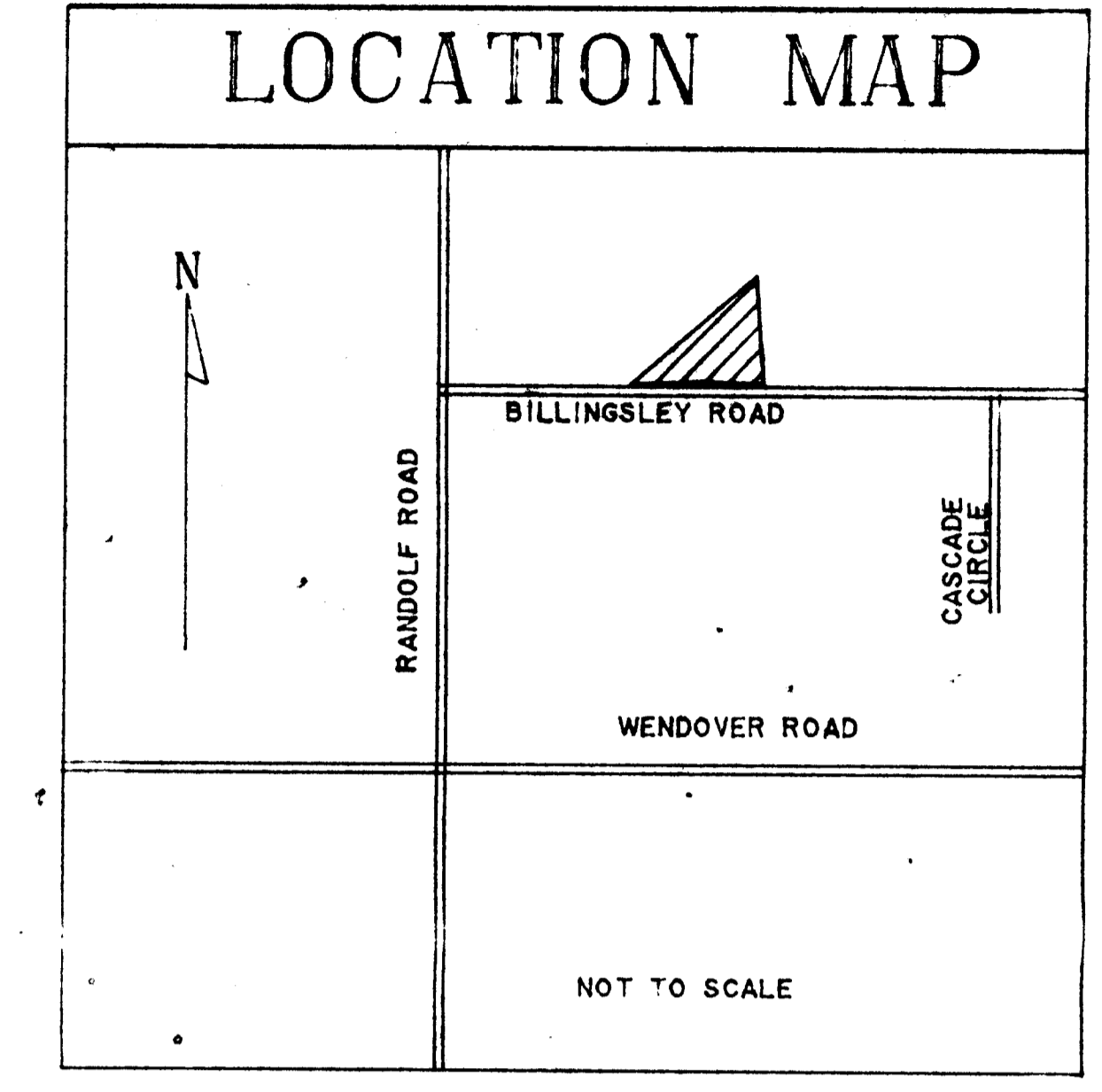


REVISIONS		
NO.	DATE	DESCRIPTION



- NOTES:**
- 1.) SITE AREA - 1.5 ACRES
  - 2.) BUILDING AREA - FIRST FLOOR - 6724 S.F.  
SECOND FLOOR - 6724 S.F.  
TOTAL - 13,448 S.F.
  - 3.) OCCUPANCY - MEDICAL OFFICES
  - 4.) TOTAL PARKING REQUIRED - 65 SPACES  
TOTAL PARKING PROVIDED - 65 SPACES
  - 5.) ALL CURB AND GUTTER TO BE 24" U.N.O.
  - 6.) DIMENSIONS FROM BACK OF CURB TYP.
  - 7.) ALL PAVING TO BE 6" STONE BASE AND 2" ASPHALT.

- LEGEND**
- EXISTING PAVING, CURB, BUILDING, ETC.
  - PROPERTY LINE
  - R/W OR SETBACK LINE
  - E.I.P. EXISTING IRON PIN
  - E.C.M. EXISTING CONCRETE MONUMENT

### SITE PLAN

SCALE: 1"=20'-0"



**NOTE:**  
SITE TO COMPLY WITH CITY OF CHARLOTTE TREE ORDINANCE.

BENCHMARK  
NAIL IN POWER POLE  
ELEV. 703.00

APPROVED BY CITY COUNCIL  
DATE 11/20/89

89-79

ISSUED BY:	DATE ISSUED:	ISSUED TO:	PARTY NO.:
ESTWANK BUILDING	11/20/89	OWNER	87053.01
BILLINGSLEY ROAD CHARLOTTE, N.C.			
<b>S.C. HONDROS &amp; ASSOCIATES, INC.</b> ENGINEERS & CONTRACTORS P.O. BOX 220456 CHARLOTTE, N.C. 28222 PH 377-4614			
DRN BY:	CHK BY:	SCALE:	DATE:
TDL		1"=20'-0"	9-26-89
SITE PLAN			S-1 OF 1