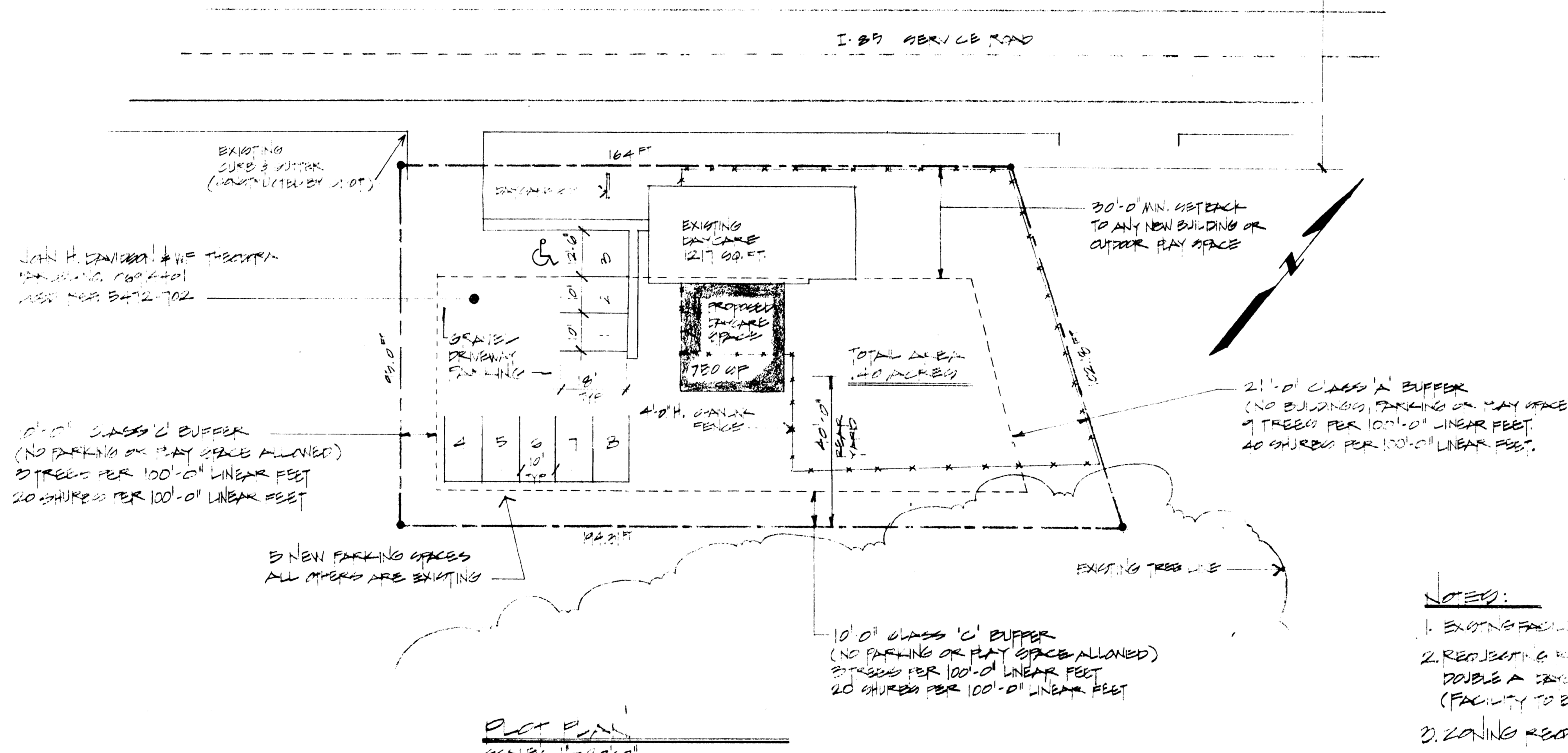
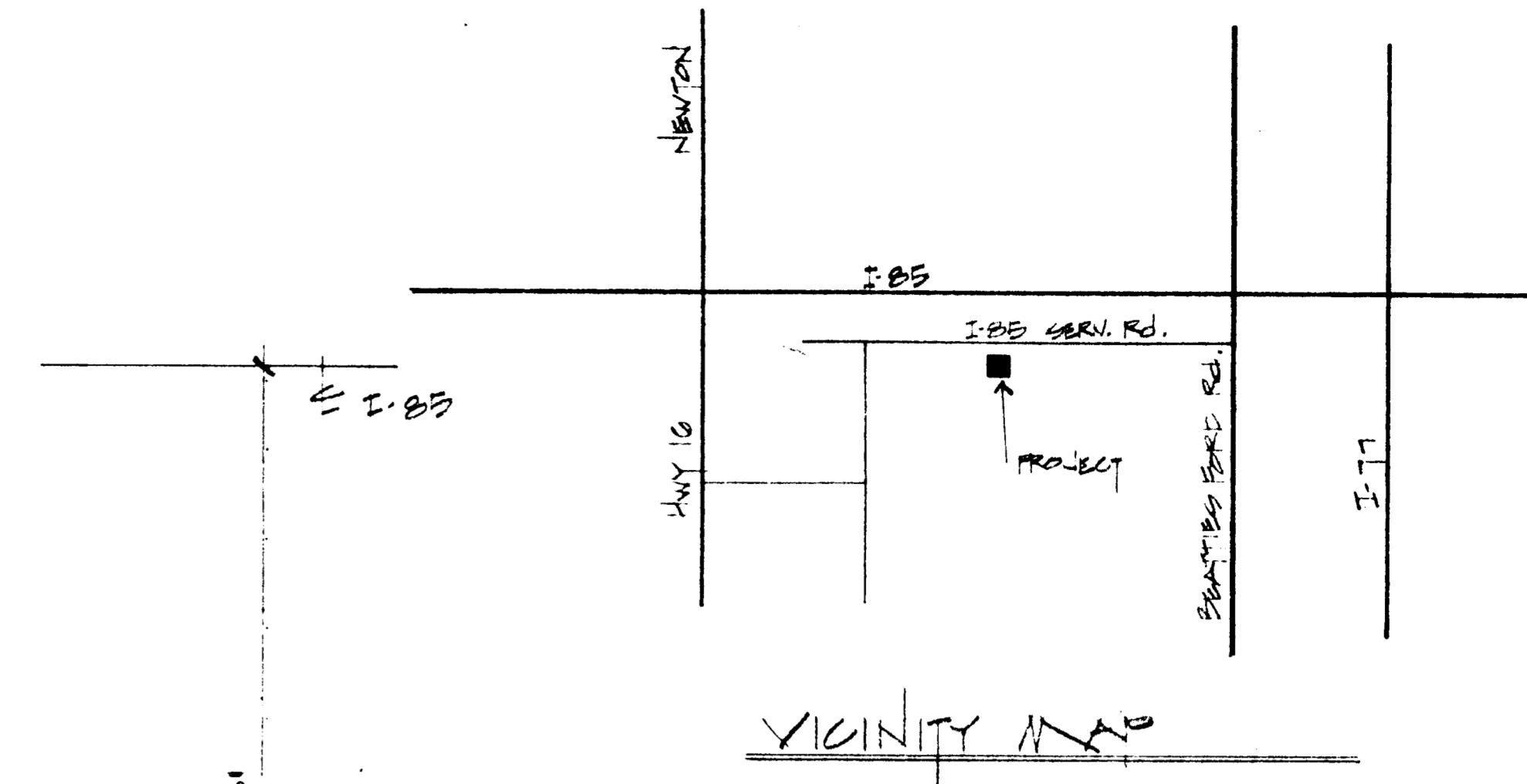


STATISTICS					
PHASE	NO. OF CHILDREN	PAY AREA REQ'D/PROVIDED	STAFF	PARKING REQ'D/PROVIDED	MIN. LOT AREA REQ'D/PROVIDED
EXISTING	15	1500 SF / 5321 SF	3	3 SPACES / 3 SPACES	3,000 SF / 17,467 SF
REZONED	25 ADDITIONAL	2,500 SF / 5321 SF	2	5 SPACES / 6 SPACES	3,000 SF / 17,467 SF
TOTAL	40 MAX.	4,000 SF / 5321 SF	5	8 SPACES / 9 SPACES	6,000 SF / 17,467 SF



- NOTES:**
- EXISTING FACILITY IS ZONED RESIDENTIAL.
 - REZONING REQUESTING PERMIT TO USE GRADE EXISTING DOUBLE A DRIVEWAYS TO ALLOW FOR A TOTAL OF 20 CH. CHILDREN (FACILITY TO BE VARIANTE USE ONLY).
 - ZONING REQUESTED R-17 MF (CD).
 - TOTAL ACREAGE .401.
 - PETITIONER WILL REQUEST A VARIANCE FROM ZONING BOARD OF ADJUSTMENTS ON TRANSITIONAL SETBACK AND REQ'D. YARD.

PLAN
SCALE: 1" = 20'-0"

REVISIONS	BY
REVISION 013-93	TF
REVISION 021-93	TF

A THURL DESIGN
RESIDENTIAL COMMERCIAL INDUSTRIAL DESIGNERS, PLANNERS & SPECIFIERS
THURL FREEMAN
145 W. HARRIS TOWN RD.
COLUMBIA, MO 65202
(314) 837-4822

REVISIONS

DORADO DRIVE
JOHN H. DAVIDSON & WIFE THURORA
532 INGLE STREET
CHARLOTTE, NC 28210
704 / 548-1565

APPROVED BY CITY COUNCIL
DATE July 19, 1993
93-21

DRAWN	THURL FREEMAN
CHECKED	TF
DATE	JUN 13 93
SCALE	AS NOTED
JOB NO.	061292
SHEET	C-1
OF	1 SHEETS