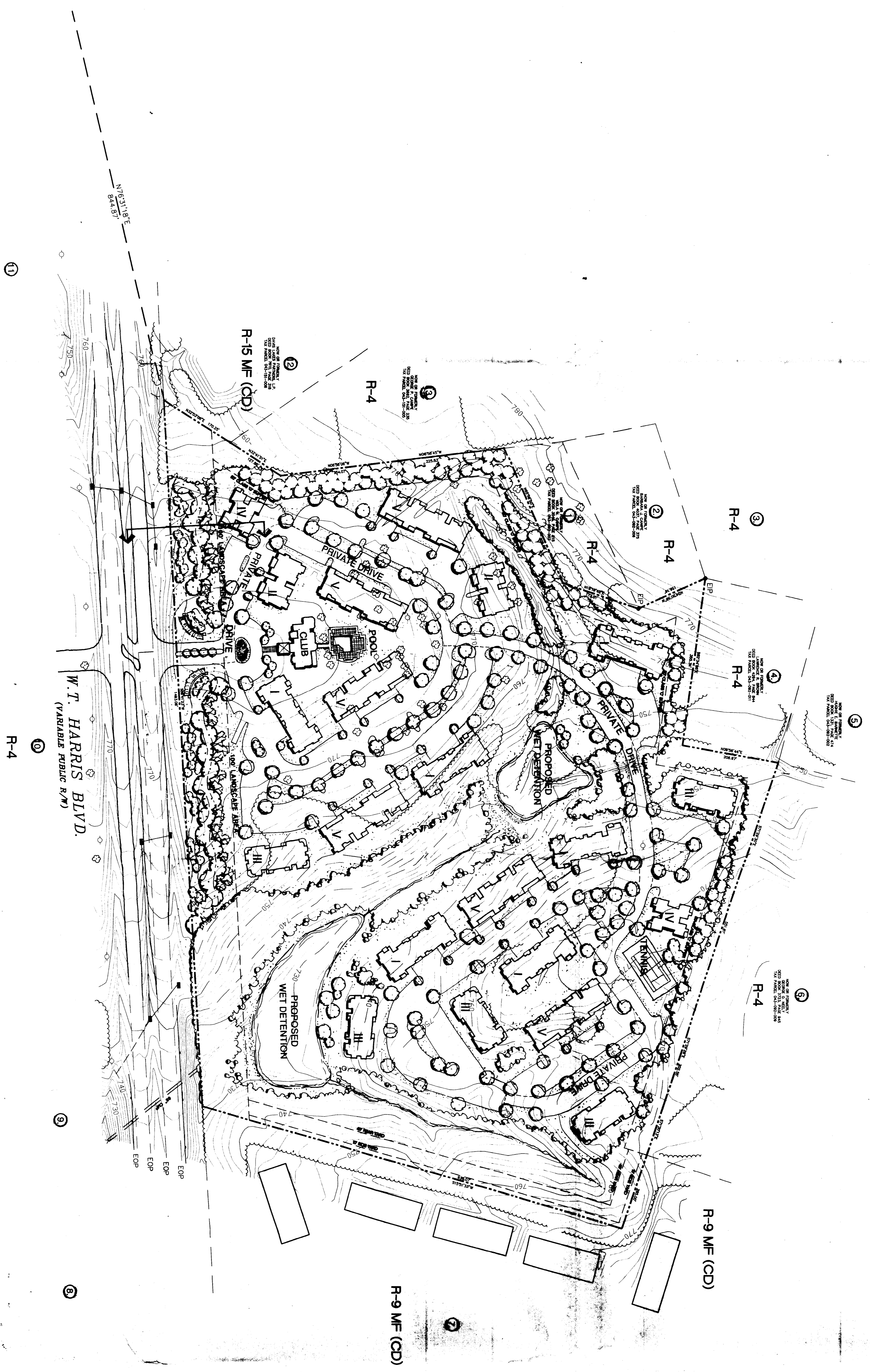
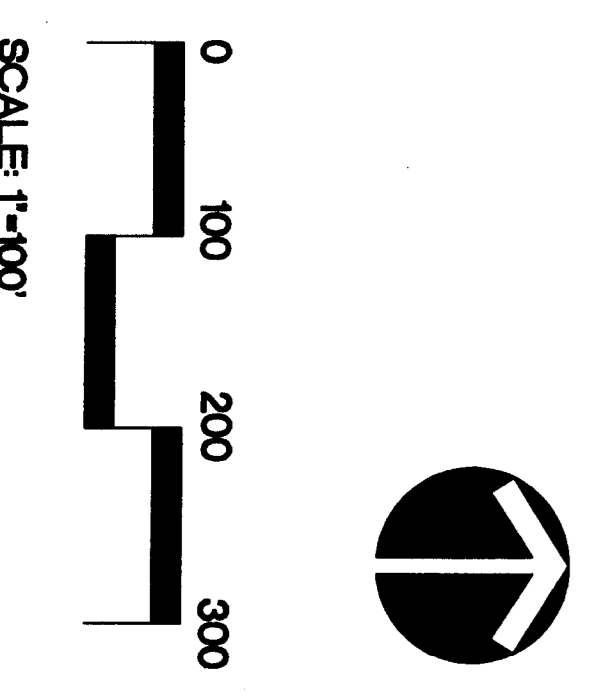


W.T. HARRIS BOULEVARD FOR FAIRFIELD RESIDENTIAL, INC.



SITE TABULATION
 TOTAL SITE AREA: 44- 0816 AC
 TOTAL BUILDING UNITS: 472- 8109 AC OR 387/
 IMPERVIOUS AREA: 47- 2307 AC OR 647/
 OPEN SPACE AREA: 47- 2307 AC OR 647/

NOTE: TOPO AND BOUNDARY DATA TAKEN FROM SURVEY PROVIDED BY CHASE LOTTE, INC. 2828-496 (704) 352-4600 OR (800) 354-4461 FAX (704) 352-4605 ON 1/26/96, JOB NO. 8904.



AS FOR PUBLIC HEARING
 PETITION NO. 96-11(C)

**SCHEMATIC
SITE PLAN**

DATE: MARCH 19, 1996
 PROJECT NO. 8041
 REVISION: 17, 806-REVISION PER PLANNING
 COMMISSION COMMENTS

Land Design Inc.
 Landscape Architecture Land Planning
 Urban Design

174115-1025
 174115-1025
 174115-1025

SHEET NO. 2
 FILE NAME: E:\WORKING\02\02\02\02.DWG OF: 3