

ZONING TABULATIONS 6/24/96

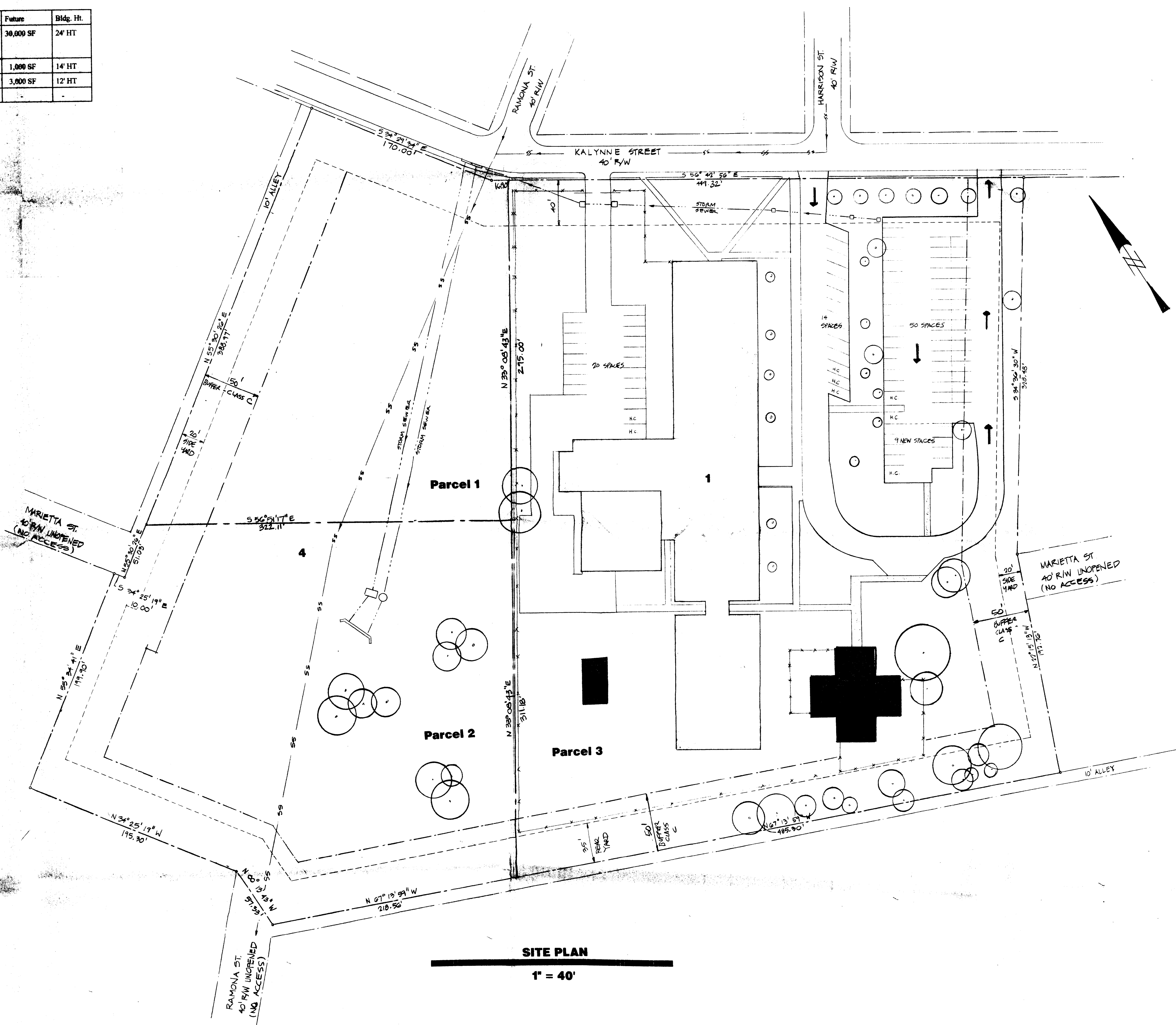
ACERAGE	
PARCEL 1	1.967 Acres
PARCEL 2	2.712 Acres
PARCEL 3	5.836 Acres
TOTAL ACERAGE	10.455 Acres
EXISTING ZONING	R-5 with Special Use Permit
PROPOSED ZONING	Institutional (Conditional Use)

#	Item	Current	Use	Future	Bldg. Ht.
1	Lakewood Center	36,600 SF	Mentally Challenged Adults Program or School operated by Charlotte-Mecklenburg Schools or Administrative Offices operated by Charlotte-Mecklenburg Schools	36,600 SF	24' HT
2	Center Accessory Use	-	Future Greenhouse	1,000 SF	14' HT
3	Lakewood Preschool	3,600 SF	Preschool Program	3,600 SF	12' HT
4	Open Space Recreation	4.6 AC	Community Park	-	-

REQUIRED YARDS	Setback	40'
	Side Yard	20'
	Rear Yard	35' (Rear yard of adjacent R-5 District)

REQUIRED BUFFER - 10.455 Acre Total Site  
 Class C Buffer, 50' Width (To Be Provided with future improvements)  
 Note: Required buffer may be reduced per provisions of Zoning Ordinance 12.203.  
 Buffer requirements may change depending on ultimate future uses implemented.

PARKING	All Parking for Existing, Proposed and Future Uses to be provided on site.
Existing	84 Spaces
Proposed	9 Spaces



**SITE PLAN**  
 1" = 40'



Two NationsBank Plaza  
 101 South Tryon Street  
 Charlotte, North Carolina 28280  
 704/332-7004  
 10 Pope Avenue, Executive Park  
 Post Office Box 5810  
 Hilton Head Island, SC 29938  
 803/785-2199

Drawing Updates

APPROVED BY CITY COUNCIL  
 DATE June 24, 1996

Lakewood Center  
 Rezoning  
 96-63  
 Charlotte-Mecklenburg Schools

Revisions

Drawn By HEF Approved By HEF  
 Sheet Number  
**Z-1**  
 Date 6/24/96 Project Number 1881.01