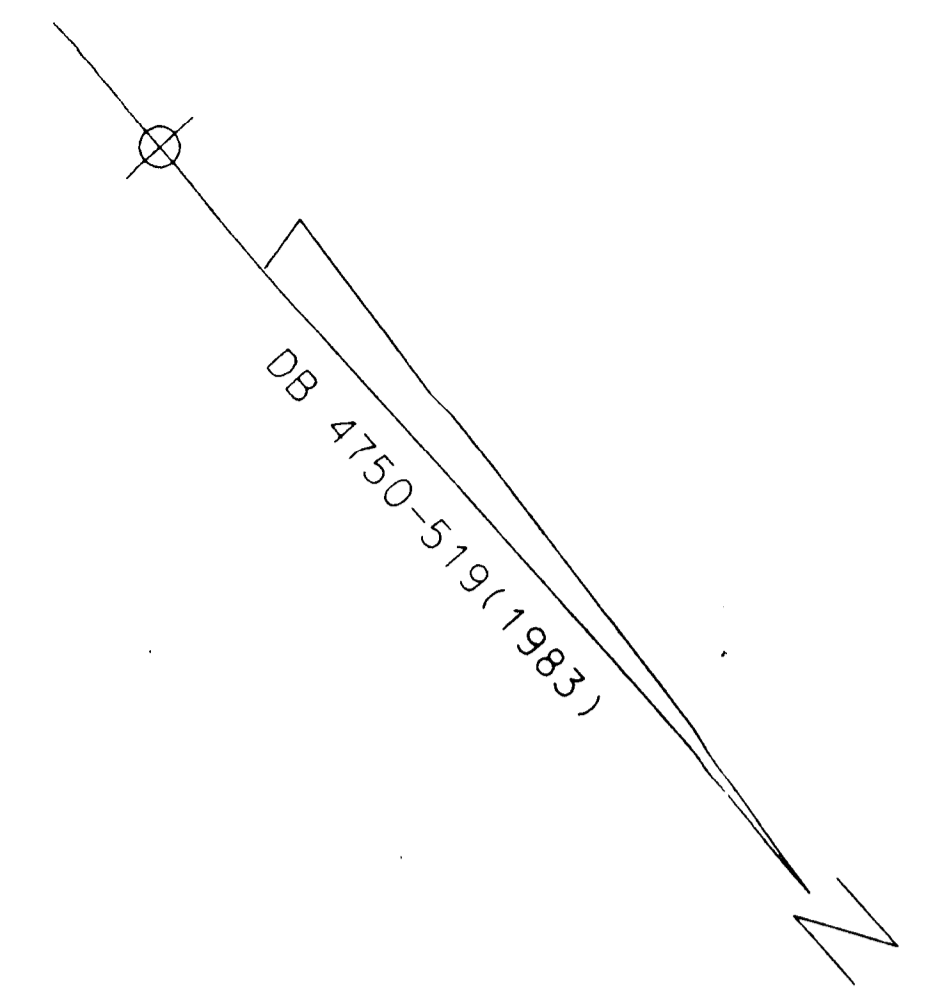
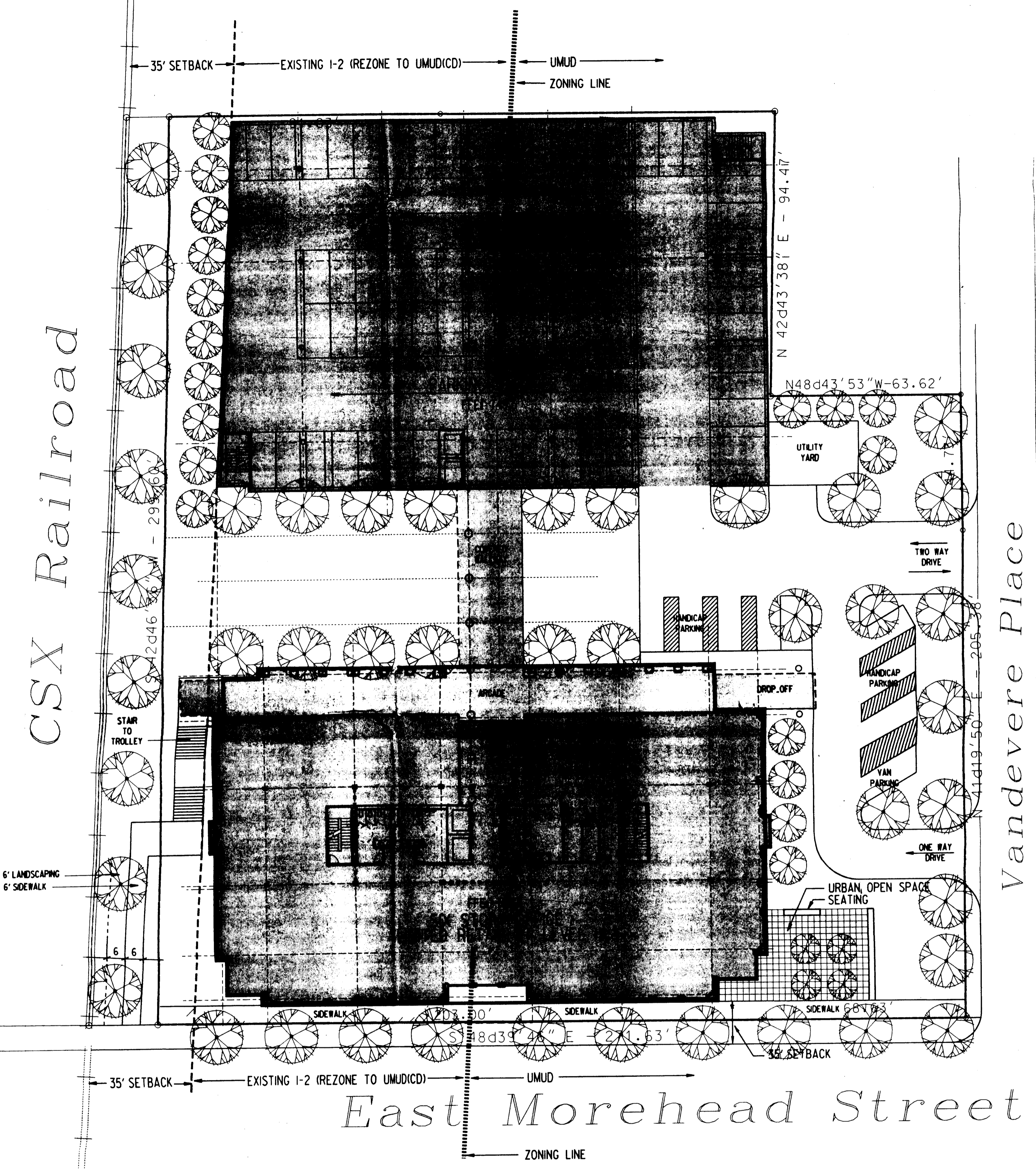


DESIGN TEAM  
 P.A.C. B. MCLELLAN E.P.M. D. HAIGH  
 P.ASSOC. P.A.RCH. P.E.  
 DESIGN J. GAULDEN

DRAWN  
 ODELL ASSOCIATES INC. CHARLOTTE, NC  
 1994 Copyright ©



**UMUD URBAN OPEN SPACE REQUIREMENTS SUMMARY:**

- GROSS BUILDING AREA = 116,925 SF
- MAXIMUM BUILDING HEIGHT: 150'-0" ABOVE FINISH FLOOR
- 170 TOTAL SQUARE FEET OF UNENCLOSED URBAN SPACE REQUIRED
- 1200 TOTAL SQUARE FEET OF UNENCLOSED URBAN SPACE PROPOSED
- 1 TREE PER EACH 500 SF OF OPEN SPACE UP TO 2000 SF = 3 TREES REQUIRED
- REQUIRED SEATING = 1 LF PER 30 SF OF REQUIRED OPEN SPACE
- = 40 LF OF SEATING REQUIRED
- PROPOSED SEATING = 40 LF

98-62

APPROVED BY CITY COUNCIL  
 DATE June 15, 1998

**UMUD PLANTING REQUIREMENTS SUMMARY:**

- STREET TREE REQUIREMENTS FOR LARGE MATURING TREES:  
 1 TREE / 35 LINEAR FEET OF PROPERTY ABUTTING A PUBLIC RIGHT-OF-WAY.
- EAST MOREHEAD STREET = 276.63 LF FRONTAGE  
 = 8 LARGE MATURING TREES REQUIRED  
 (QUERCUS PHellos, 6" CALL.)  
 IN PROPOSED GRASS PLANTING STRIP
  - VANDEVERE PLACE = 205.83 LF FRONTAGE  
 = 6 LARGE MATURING TREES REQUIRED  
 8 LARGE MATURING TREES PROVIDED
  - CSX RAILROAD = 299.60 LF FRONTAGE  
 = 9 LARGE MATURING TREES REQUIRED  
 9 LARGE MATURING TREES PROVIDED

**UMUD PARKING REQUIREMENTS SUMMARY:**

- UP TO 200,000 SF = 5 SPACES PER EACH 1000 SF
- GROSS BUILDING AREA = 116,925 SF
- 59 SPACES REQUIRED
- NUMBER OF SPACES PROPOSED INCLUDES:
- PARKING GARAGE 300 SPACES
- HANDICAP PARKING 8 SPACES
- TOTAL PARKING PROVIDED: 308 SPACES

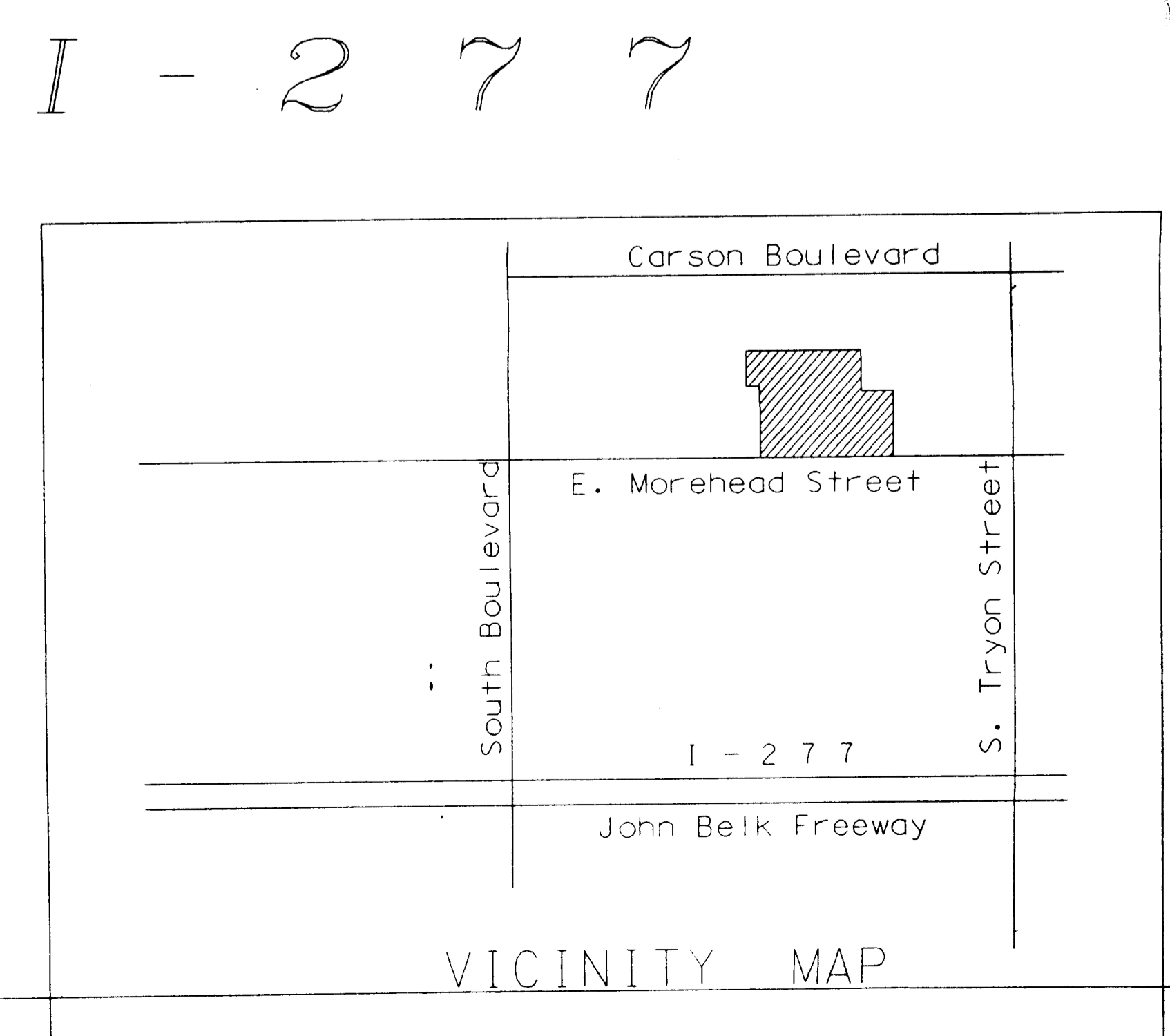
NO. BY DATE DESCRIPTION

**200 EAST MOREHEAD**

98-62  
 "FOR PUBLIC HEARING"

**GENERAL SITE NOTES:**

1. THE MAXIMUM HEIGHT OF ANY PROPOSED BUILDING ON THE SITE IS 150'.
2. A MINIMUM 35 FOOT BUILDING AND PARKING SETBACK WILL BE MAINTAINED ALONG THE TRANSIT CORRIDOR.
3. ALL PARKING WITHIN PARKING STRUCTURE WILL BE SCREENED FROM PUBLIC STREET, PUBLIC VIEW AND THE TRANSIT CORRIDOR.
4. VEHICULAR ACCESS TO THE SITE WILL BE RESTRICTED TO VANDEVERE PLACE AND THAT AREA OF EAST MOREHEAD ST. THAT IS PRESENTLY ZONED UMUD.
5. ALL EXISTING OVERHEAD UTILITIES ON THE SITE WILL BE BURIED.
6. ALL DUMPSTERS WILL BE PROVIDED WITH SOLID ENCLOSURES WITH GATES.
7. THE BUILDING SHOWN ON THE PLAN IS SCHEMATIC IN NATURE. ANY BUILDING CONSTRUCTION ON SITE WILL HAVE FRONT ACCESS DOORS THAT ORIENT ON MOREHEAD STREET.
8. THE SITE DEVELOPMENT WILL COMPLY WITH ALL UMUD STANDARDS.
9. IMPROVEMENTS PLANNED FOR THE TRANSIT CORRIDOR:
  - STAIRS TO CSX RAILROAD
  - 6' SIDEWALK FROM LANDING TO E. MOREHEAD ST. BRIDGE
  - LANDSCAPING ALONG CSX RAILROAD
  - SEATING AT BOTTOM OF STAIRS
10. THE OWNER IS EVALUATING THE PARKING; POSSIBLY DELETING THE LOWER LEVEL. THE MINIMUM UMUD PARKING REQUIREMENTS WILL BE MET.
11. A NEW CURBLINE WILL BE ADDED ON VANDEVERE PLACE; TO BE LOCATED 13.5 FEET FROM THE EXISTING CENTERLINE.



SCALE: 1"=20'

KEY PLAN  
 SHEET TITLE  
 SITE PLAN

PROJECT NUMBER  
 2783-000  
 DATE  
 16 APR 1998  
 SHEET NUMBER

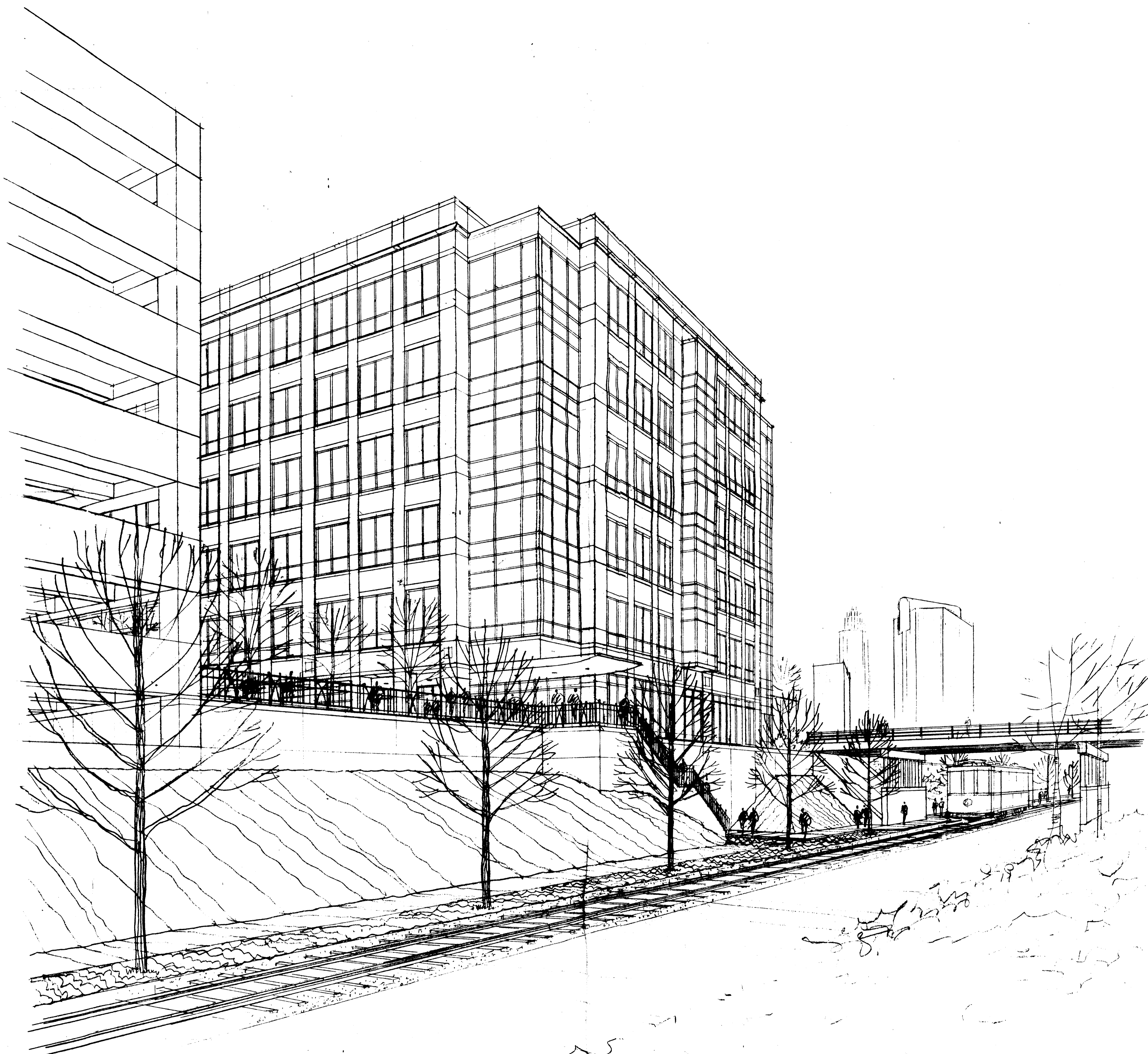
**A1.1**

Printed by P&H on 04/16/98 at 09:58 AM EDT on Thursday, April 16, 1998



DESIGN TEAM  
P.A.C. B. MCLELLAN E.P.M. D. HAIGH  
P.ASSOC. J. GAULDEN P.E.  
DESIGN J. GAULDEN

DRAWN  
ODELL ASSOCIATES INC. CHARLOTTE, NC  
1994 Copyright



**PERSPECTIVE FROM TRANSIT**

NO. BY DATE DESCRIPTION

**200  
EAST  
MOREHEAD**

**98-62  
"FOR PUBLIC HEARING"**



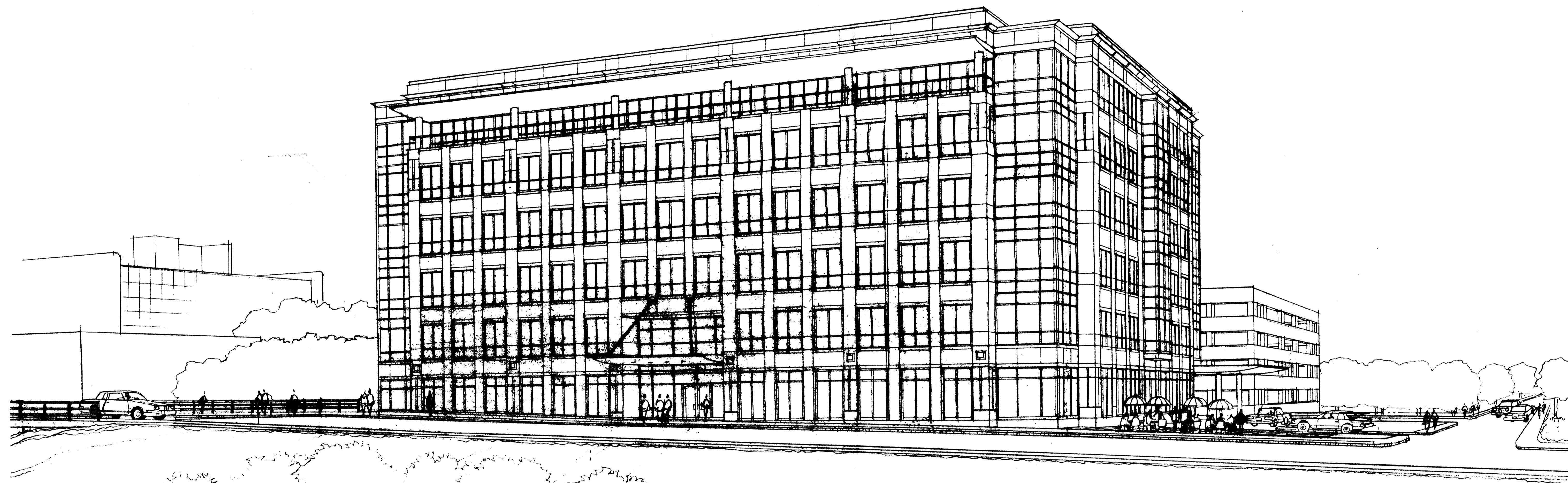
KEY PLAN  
SHEET TITLE

**PERSPECTIVE**

PROJECT NUMBER  
2783-000  
DATE  
16 APR 1998  
SHEET NUMBER

DESIGN TEAM  
 P.L.C. B. MCLELLAN E.P.M. D. HAIGH  
 P.ASSOC. J. GAULDEN P.E.  
 DESIGN J. GAULDEN

DRAWN  
 ODELL ASSOCIATES INC. CHARLOTTE, NC  
 1994 Copyright



PERSPECTIVE FROM MOREHEAD STREET

16 APR 98  
 NO. BY DATE DESCRIPTION

**200  
 EAST  
 MOREHEAD**

**98-62  
 "FOR PUBLIC HEARING"**



KEY PLAN  
 SHEET TITLE

PROJECT NUMBER  
 DATE 19 MAR 98  
 SHEET NUMBER



DESIGN TEAM  
 P.J.C. B. MCLELLAN  
 P.A.S.S.O.C. J. GAULDEN E.P.M. D. HAIGH  
 DESIGN J. GAULDEN P.E.

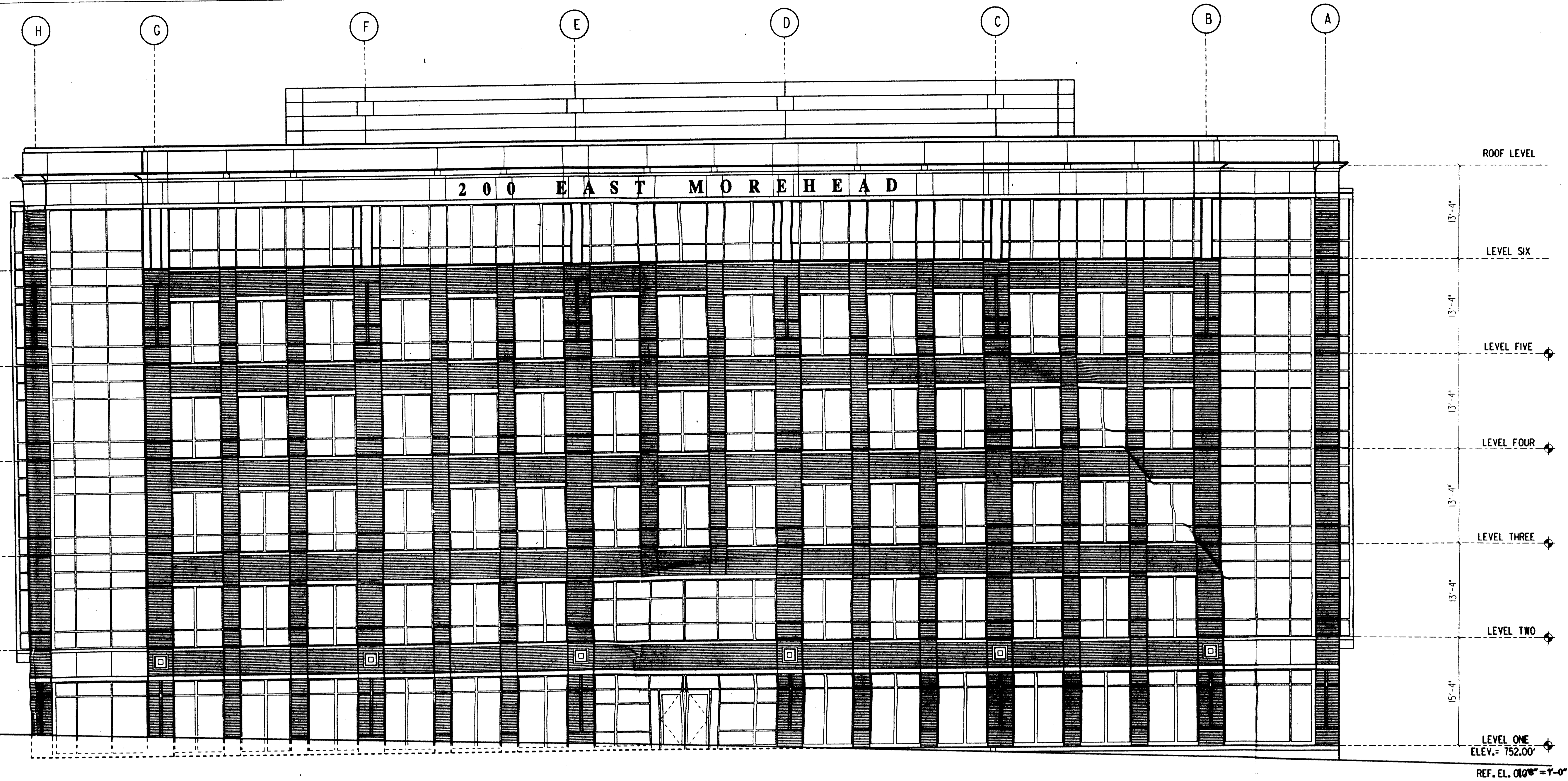
DRAWN  
 ODELL ASSOCIATES INC. CHARLOTTE, NC  
 1994 Copyright

MATERIALS LEGEND	
	SPRINKLER
	EIFS SCREEN
	BRICK
	CASTSTONE
	METAL
	GLASS

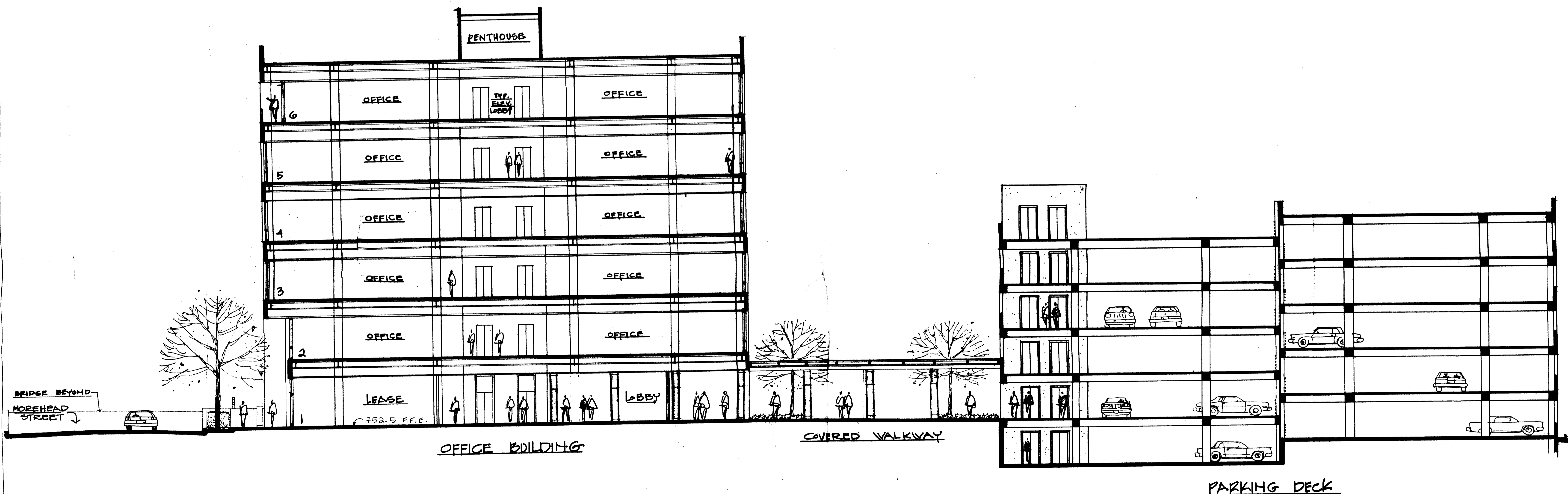
C18A - INSULATING GLASS (CLEAR)-  
 VIRACON VE2-2M WITH LOW E COATING  
 BOTH SHEETS ANEALED

C18E - INSULATING GLASS (CLEAR)-  
 VIRACON VE2-2M WITH LOW E COATING  
 BOTH SHEETS TEMPERED

C18F - INSULATING GLASS (CLEAR)-  
 VIRACON VE2-2M WITH LOW E COATING  
 INTERIOR LIGHT - TEMPERED  
 EXTERIOR LIGHT - ANEALED



11 EAST MOREHEAD ELEVATION



NORTH-SOUTH SECTION THROUGH OFFICE BUILDING AND PARKING DECK ( LOOKING EAST ) 1"=1'-0"

16 APR 98  
 19 MARCH 98  
 NO. BY DATE DESCRIPTION

200  
 EAST  
 MOREHEAD

98-62  
 "FOR PUBLIC HEARING"

KEY  
 SHEET TITLE  
 NORTH ELEVATION  
 NORTH/SOUTH SECTION

PROJECT NUMBER  
 DATE  
 19 MARCH 98  
 SHEET NUMBER

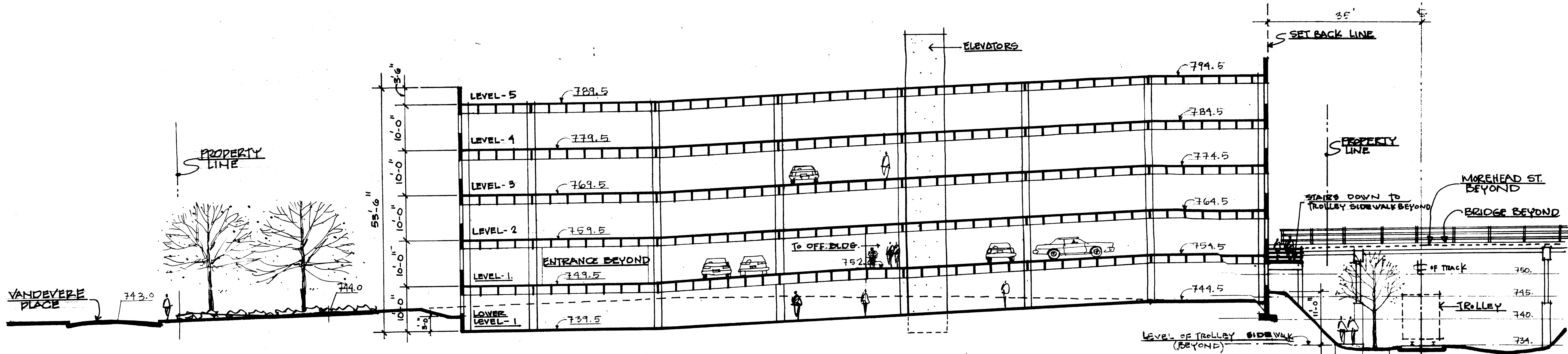
A4.1

1/8"=1'-0"

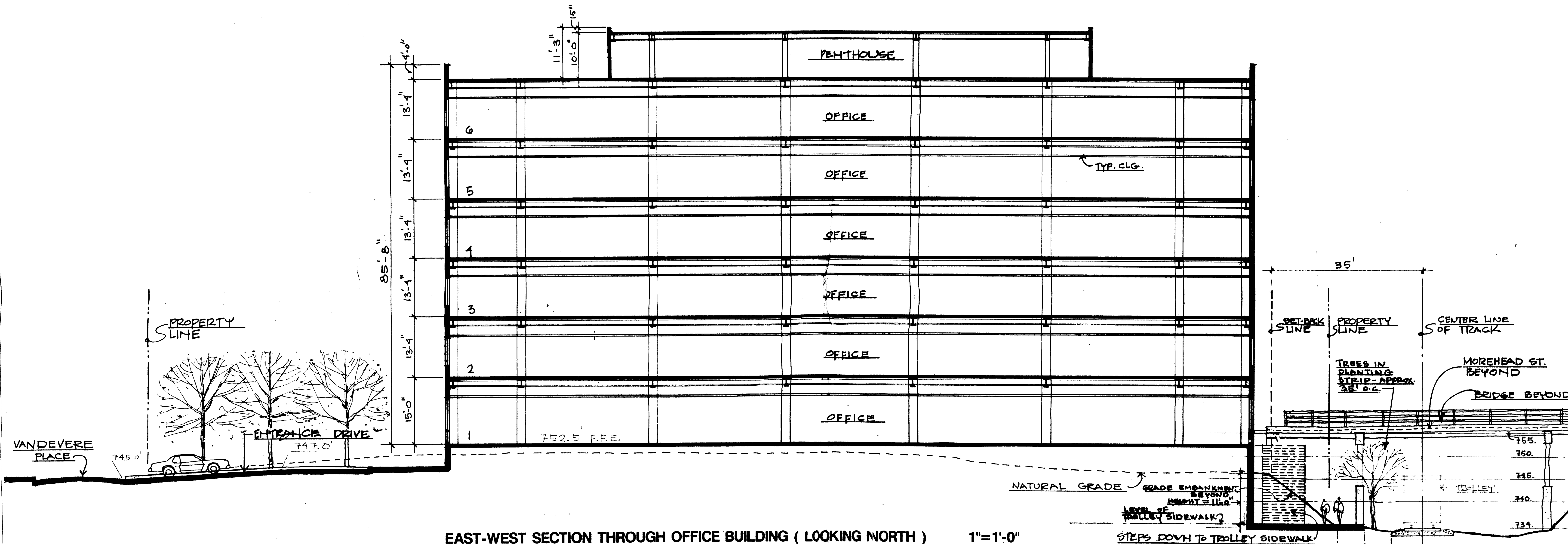


DESIGN TEAM  
 P.I.C. B. MCLELLAN E.P.M. D. HAIGH  
 P.ASSOC. J. GAULDEN P.E.  
 DESIGN J. GAULDEN

DRAWN  
 ODELL ASSOCIATES INC. CHARLOTTE, NC  
 1994 Copyright



**EAST-WEST SECTION THROUGH PARKING DECK ( LOOKING NORTH ) 1"=1'-0"**



**EAST-WEST SECTION THROUGH OFFICE BUILDING ( LOOKING NORTH ) 1"=1'-0"**

16 APR 98  
 10 MARCH 98  
 NO. BY DATE DESCRIPTION

**200 EAST MOREHEAD**  
**98-62**  
**"FOR PUBLIC HEARING"**

KEY:  
 SHEET TITLE

**EAST/WEST SECTIONS**

PROJECT NUMBER  
 DATE 17 MAR 98  
 SHEET NUMBER

**A4.2**



Printed by OdeLL Associates Inc. 12/20/98 P&E EST. 01, Thursday, March 17, 1998