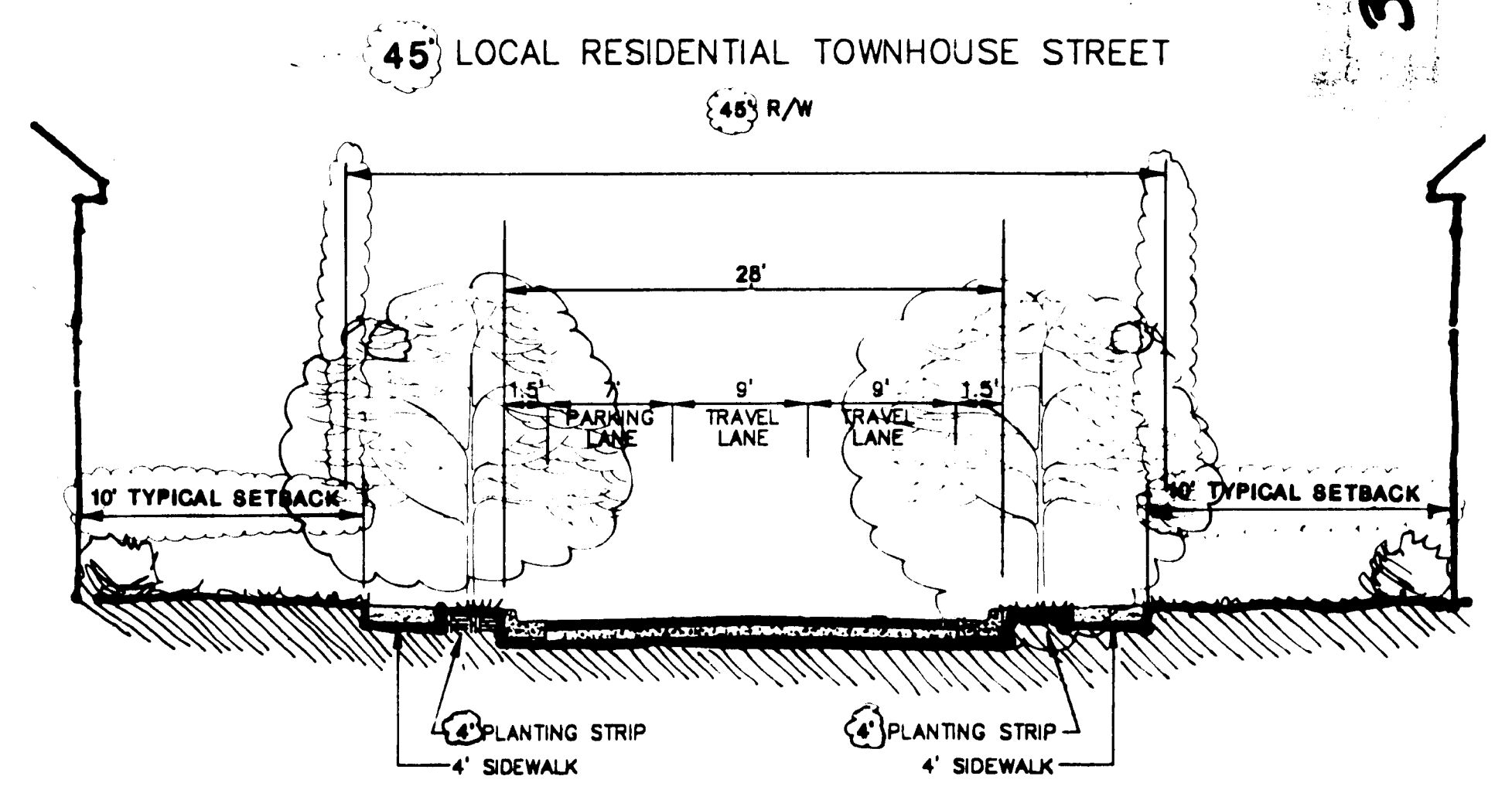
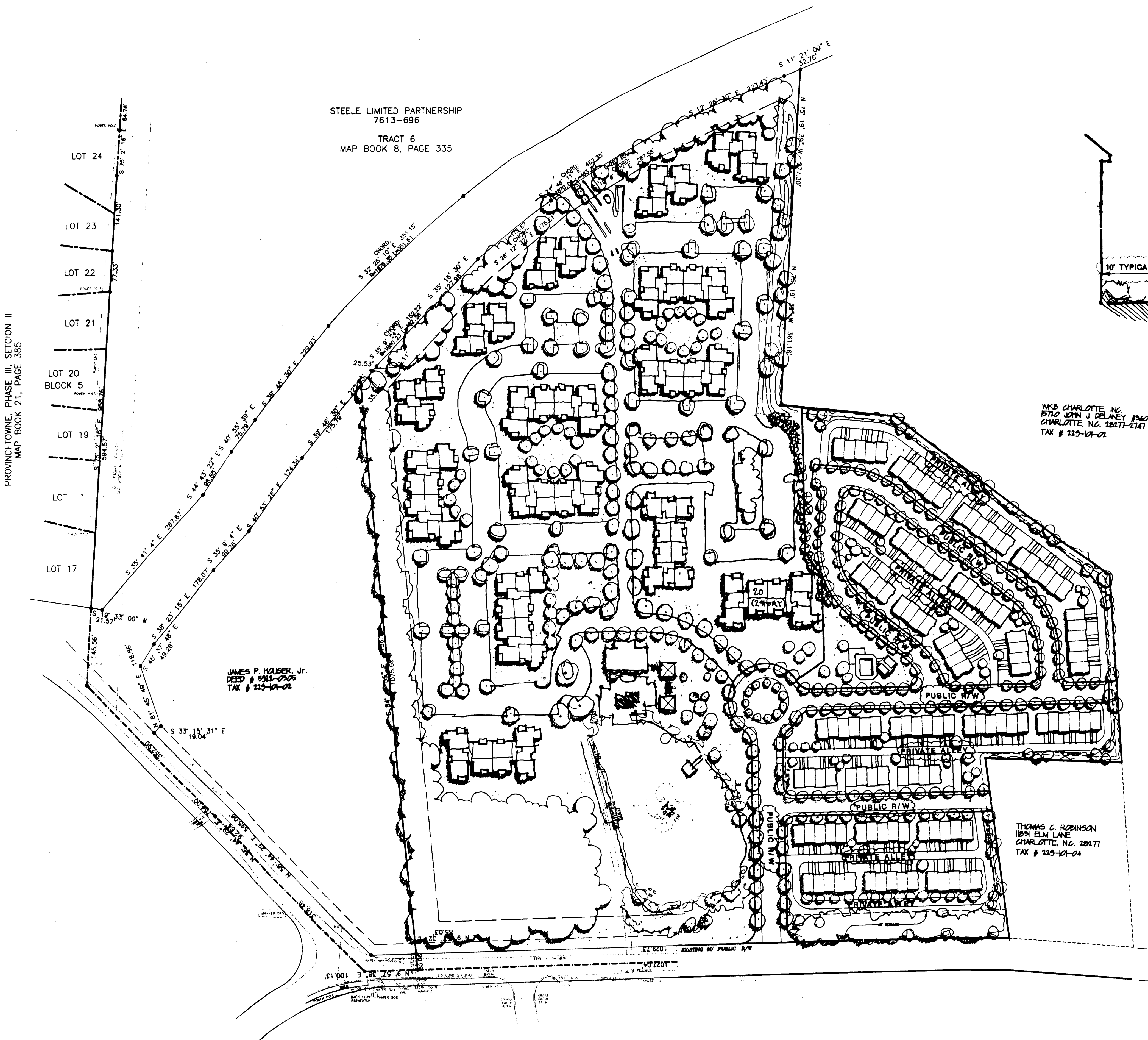


PACE/DOWD PROPERTIES, LTD.

PROVIDENCE ROAD WEST
CHARLOTTE, N.C.

3-15-99



WKB CHARLOTTE, INC.
1570 JOHN J. DELANEY PKWY
CHARLOTTE, N.C. 28217-2147
TAX # 225-101-02

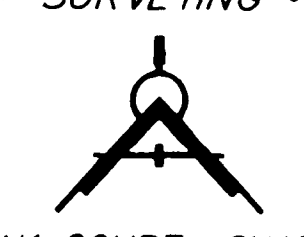
FOR PUBLIC HEARING
REZONING PETITION # 99-20

SCHEMATIC SITE PLAN

SCALE: 1" = 60'
DATE: 11/17/98
REVISIONS: FOR CAMP COMMENTS 1/19/99 BY G

229 101 03 po
229 101 04 po

YARBROUGH - WILLIAMS & ASSOCIATES, INC.
PLANNING • SURVEYING • ENGINEERING



730 WINDSOR OAK COURT CHARLOTTE, NC 28273
(704) 556-1990 FAX (704) 556-0505