

**LANDSCAPE NOTES**

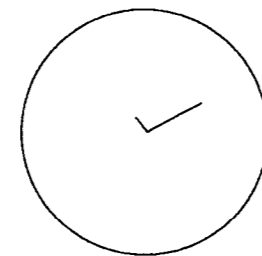
**GENERAL LANDSCAPE NOTES:**

1. MINIMUM TREE SIZE AT PLANTING IS 2" CALIPER (FOR SINGLE STEM TREES). ALL MULTI-STEM PLANTS MUST BE TREE FORM, MAXIMUM 3 TRUNKS, AND MINIMUM 8' TALL. MULCH IS REQUIRED.
2. ALL STRAPPING AND TOP 2/3 OF WIRE BASKET MUST BE CUT AWAY AND REMOVED FROM ROT BALL PRIOR TO BACKFILLING PLANTING PIT. REMOVE TOP 1/3 OF BURLAP FROM ROOT BALL.
3. FOR NEW PLANTING AREAS, REMOVE ALL PAVEMENT, GRAVEL SUB-BASE AND CONSTRUCTION DEBRIS. REMOVE COMPACTED SOIL AND ADD 24" NEW TOP SOIL OR UNCOMPACT AND AMEND 24" OF EXISTING SOIL TO MEET TOP SOIL/ PLANTING MIX STANDARDS FOR TREES (WITHIN ENTIRE MINIMUM AREA OF 200 SQ. FT. PER TREE).
4. LARGE MATURING TREES ARE NOT ALLOWED UNDER OVERHEAD DISTRIBUTION OR TRANSMISSION LINES. IF TREES CONFLICT WITH POWER LINES OR SIGNS, CALL URBAN FORESTER TO RESOLVE BEFORE PLANTING.
5. PLEASE CALL 336-4824 FOR AN INSPECTION OF TREE PROTECTION AND / OR TREE PLANTING AREAS, 7 TO 10 DAYS BEFORE THE TEMPORARY OR FINAL CERTIFICATE OF OCCUPANCY IS NEEDED.
6. GUY WIRES ARE NOT PERMITTED IN THE STREET RIGHT-OF-WAY.
7. ALL TREES SHALL MEET AMERICAN STANDARDS FOR NURSERY STOCK (ANSI, 1990, PART 1, "SHADE AND FLOWERING TREES").

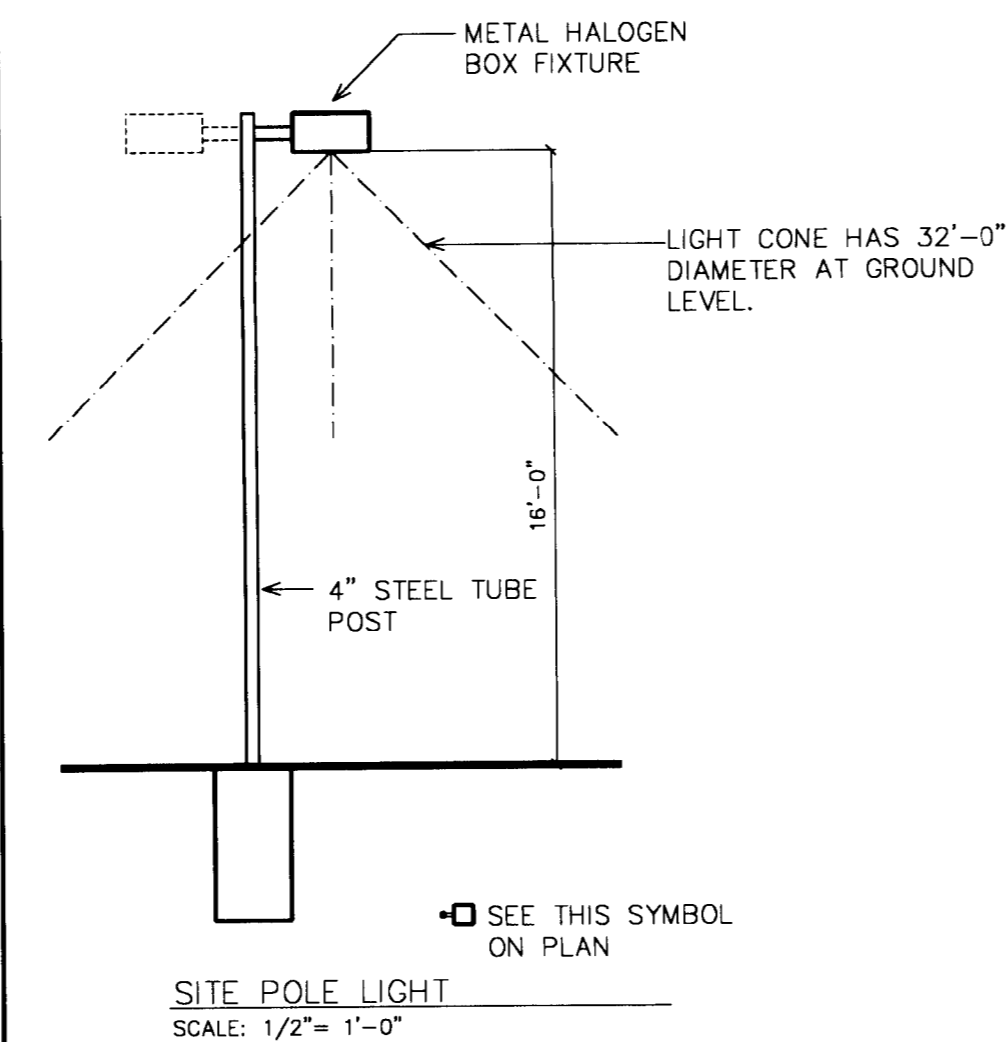
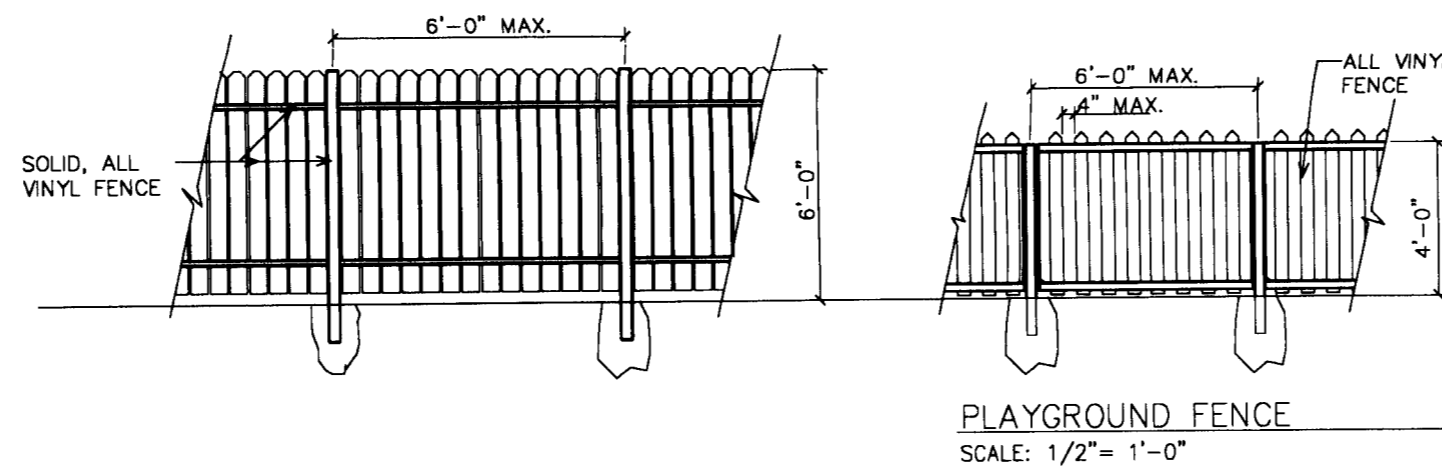
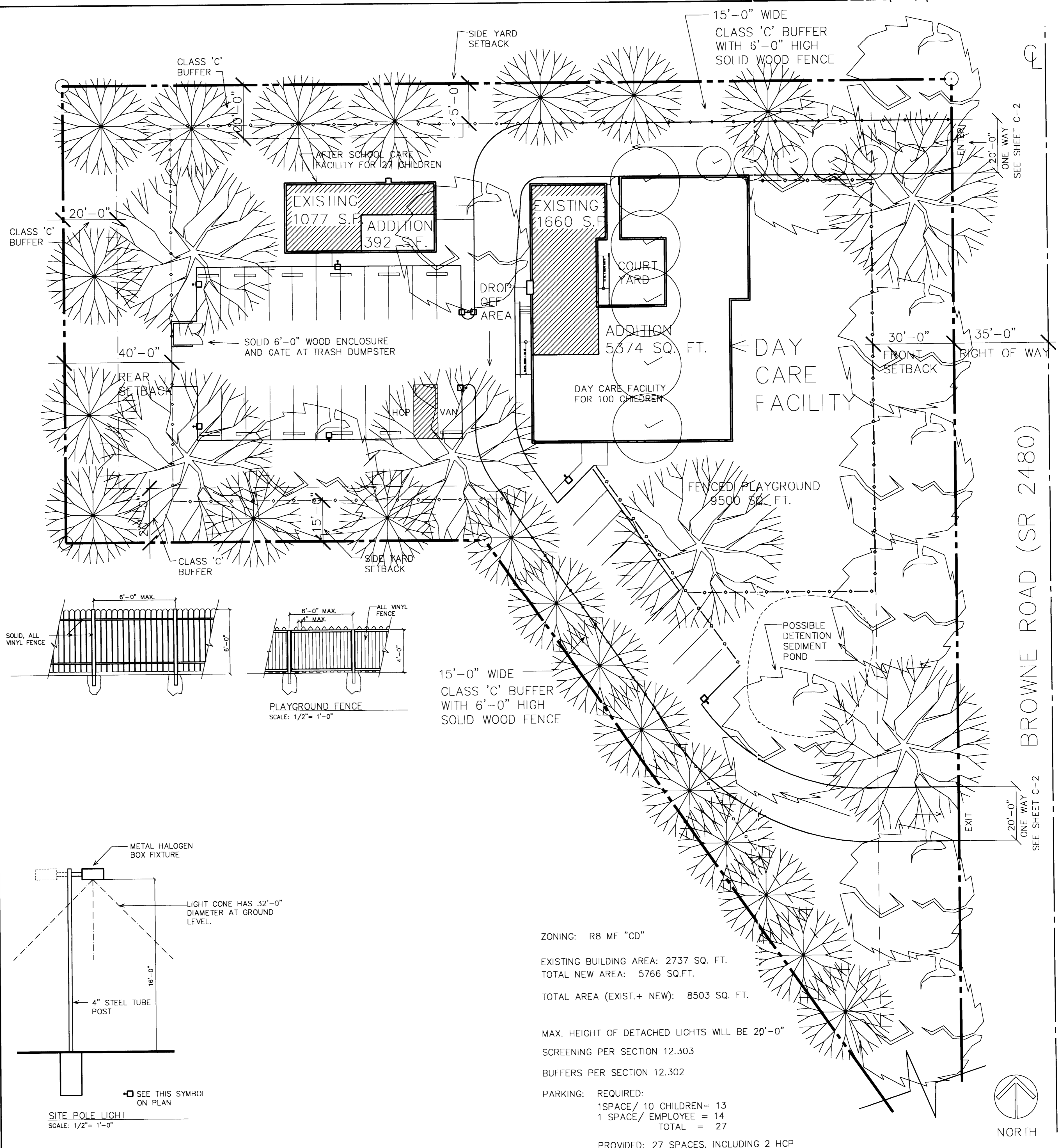
**FOR EXAMPLE:**

CALIPER	HEIGHT RANGE	MAX. HGHT.	MIN ROOT BALL	MIN DEPTH
2"	12' TO 14'	16'	24"	16"
3"	14' TO 16'	18'	32"	21"

8. PREFERRED SPACING FOR TREES IS:  
30' FOR SMALL MATURING TREES (20' MIN. IF PLANTED IN GROUPS).  
40' FOR LARGE-MATURING TREES (25' MIN. IF PLANTED IN GROUPS).
9. ADJUST TREE PLANTING LOCATIONS TO AVOID UNDERGROUND UTILITIES- PLANT 15-20' OFF SEWER AND STORM DRAINAGELINES; 10-15' OFF GAS, WATER, PHONE, AND UNDERGROUND ELECTRIC LINES.
10. EXISTING HEALTHY TREES AS SHOWN WITHIN 25 FEET OF THE RIGHT-OF-WAY LINE MAY BE CREDITED TOWARD THE PERIMETER REQUIREMENT IF PRESERVED HEALTHY.
11. EXISTING TREES TO BE UP ROOTED, THEN RE-PLANTED WITH NEW.



**PERMITASE: DAYCARE ONLY.**



ZONING: R8 MF "CD"

EXISTING BUILDING AREA: 2737 SQ. FT.  
TOTAL NEW AREA: 5766 SQ.FT.

TOTAL AREA (EXIST.+ NEW): 8503 SQ. FT.

MAX. HEIGHT OF DETACHED LIGHTS WILL BE 20'-0"

SCREENING PER SECTION 12.303

BUFFERS PER SECTION 12.302

PARKING: REQUIRED:  
1 SPACE/ 10 CHILDREN = 13  
1 SPACE/ EMPLOYEE = 14  
TOTAL = 27

PROVIDED: 27 SPACES, INCLUDING 2 HCP

1 SITE PLAN  
SCALE: 1"=20'-0"

"FOR PUBLIC HEARING" PETITION NUMBER 01-052

APPROVED BY CITY COUNCIL  
DATE 9/17/01

P-6-C1  
C1-52

DATE	ACTION/REVISION
MAY 08, 2001	PRELIMINARY REVIEW
MAY 10, 2001	PUBLIC HEARING
JULY 11, 2001	PLANNING COMMISSION COMMENTS

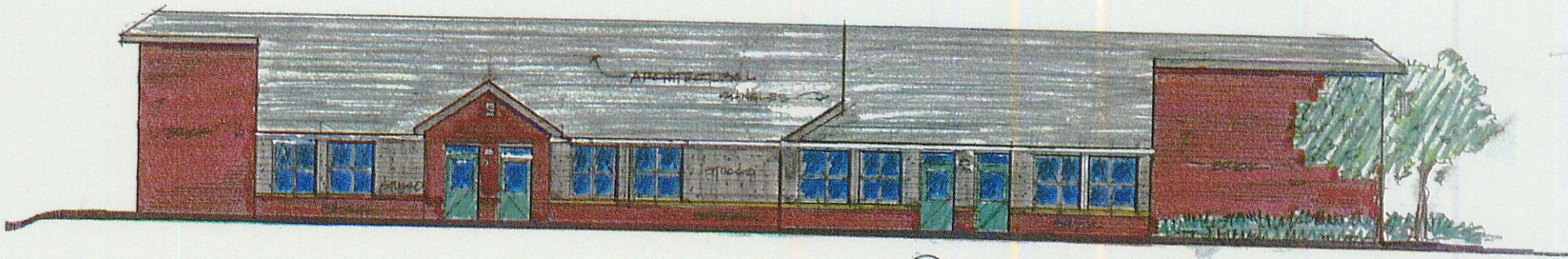
**WAYNE SIMS INC.**  
7810 BALLANTYNE COMMONS PARKWAY, CHARLOTTE NC. 28277  
PHONE: 704.319.5599 FAX: 704.319.2250

**MALLARD CREEK LEARNING CENTER**  
8765 BROWNE ROAD  
CHARLOTTE, NORTH CAROLINA

**ACANTHUS**  
58 LAKEWOOD DR.  
ASHEVILLE, NC 28803  
(828) 252-7640

Project #: 01-1  
Designed by: CSG  
Drawn by: CSG  
Checked by: CSG

Sheet No.  
**C-1**  
Contents:  
SITE PLAN



CONCEPT ELEVATION  
SCALE 1/4" = 1'-0"