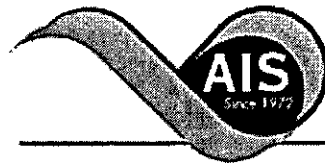




* 0 0 B R E A K 0 0 *



**ADVANCED
IMAGING
SYSTEMS**

www.aisimc.com

An Information
Management Company

City of Charlotte – Planning Dept. Scanning Rezoning Files

Petition # _____

Document type:

- Applications
- Correspondence
- Department Comments
- Land Use Consistency
 - Mail Info
 - Mapping
 - Other
- Site Plans



* 0 0 B R E A K 0 0 *

Petition #: **2002-79**

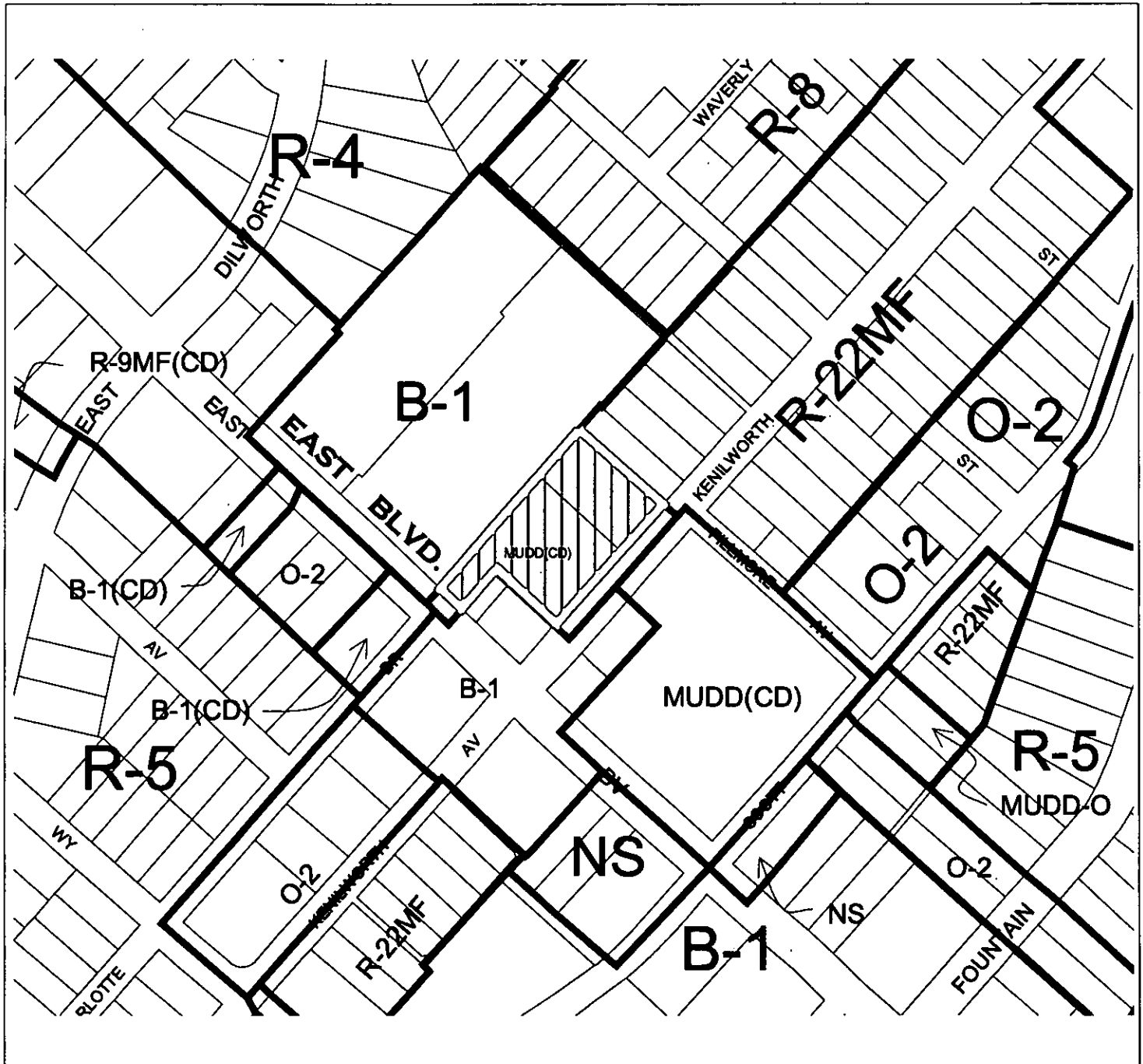
Petitioner: **Kenilworth Commons, (E&A) LLC**

Hearing Date: **July 15, 2002**

Zoning Classification (Existing): **MUDD-CD**

Zoning Classification (Requested): **MUDD-CD Site Plan Amendment**

Acresage & Location **Approximately 1.23 acres located near the northwest corner of East Boulevard and Kenilworth Avenue.**



Zoning Map #(s):

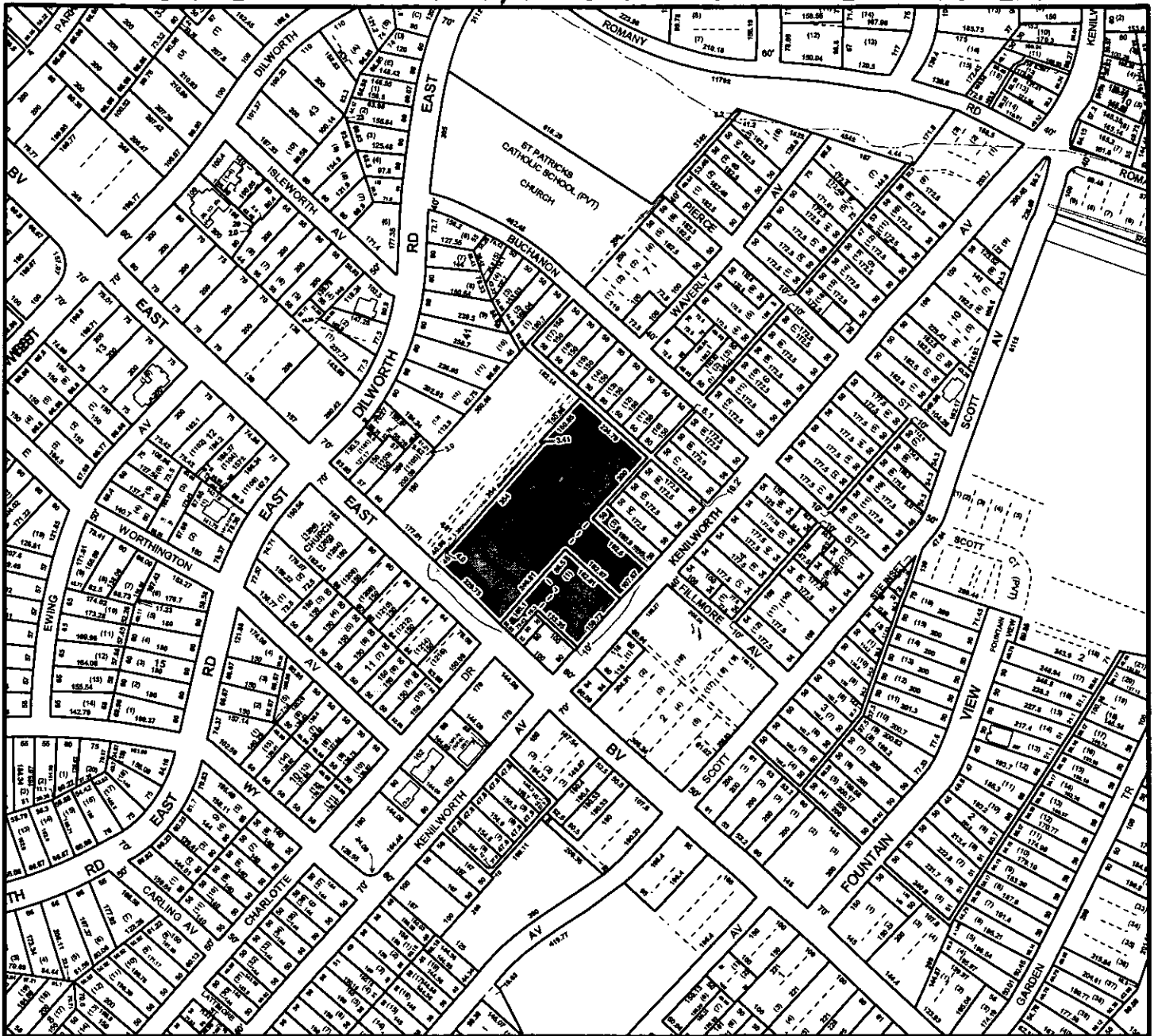
111

Charlotte-Mecklenburg Planning Commission

Map Legend

	ETU		Floodplain Map
	Arterial		County Line
	Watershed		City Limit
	Historic District		

MECKLENBURG COUNTY, NC GIS PUBLIC ACCESS SYSTEM



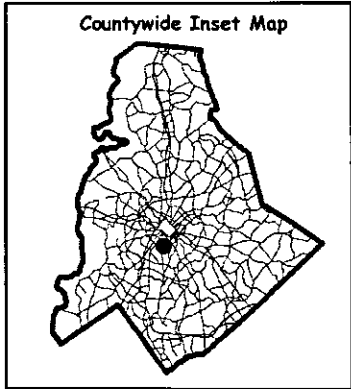
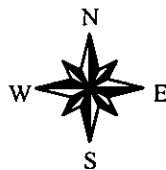
Tax Parcel-Id#s Selected: See Tax Information Report for List of Parcel-Id#s

Tax Book & Page Selected: N/A

02-79

LEGEND

- County Boundary
- Rivers/Creeks/Streams
- Railroad ROW
- Water Bodies



Scale : 1 Inch = 400 Feet
 Map Created on Monday, June 17, 2002 03:01 PM

This map is prepared for the inventory of real property within Mecklenburg County and is compiled from recorded deeds, plats, tax maps, surveys, planimetric maps, and other public records and data. Users of this map are hereby notified that the aforementioned public primary information sources should be consulted for verification. Mecklenburg County and its mapping contractors assume no legal responsibility for the information contained herein.