



\* 0 0 B R E A K 0 0 \*



**ADVANCED  
IMAGING  
SYSTEMS**

www.aisimc.com

An Information  
Management Company

# City of Charlotte – Planning Dept. Scanning Rezoning Files

Petition # \_\_\_\_\_

## Document type:

- Applications
- Correspondence
- Department Comments
- Land Use Consistency
  - Mail Info
  - Mapping
  - Other
- Site Plans



\* 0 0 B R E A K 0 0 \*

Petition #: 2002-102

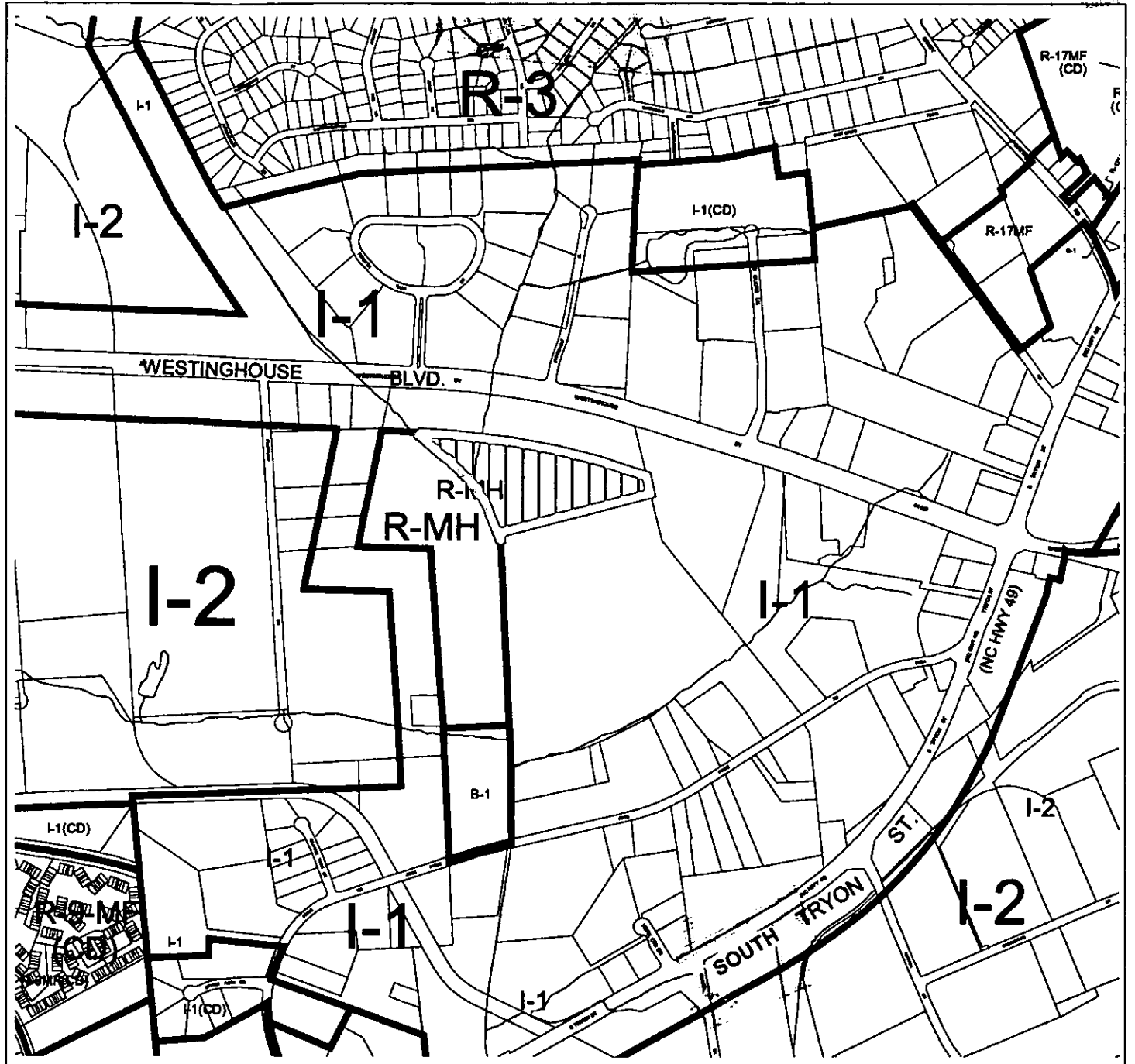
Petitioner: Alan T. Withrow

Hearing Date: September 17, 2002

Zoning Classification (Existing): R-MH

Zoning Classification (Requested): I-1

Acreage & Location Approximately 23.2 acres located south of Westinghouse Boulevard, west of South Tryon Street (NC Hwy 49)

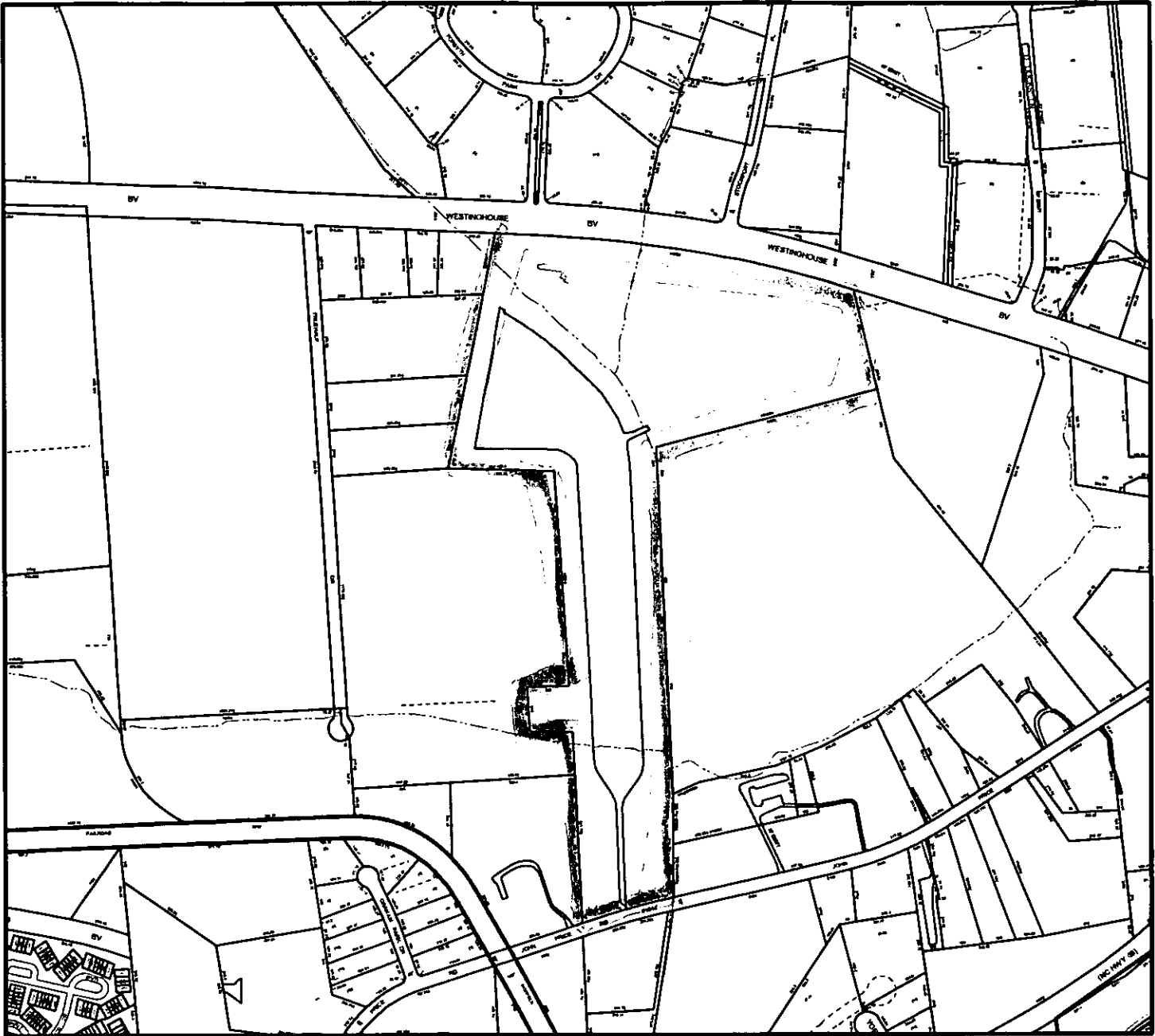


Zoning Map #(s); 150

**Map Legend**

 RTJ	 Floodplain
 Airport	 County Line
 Wetland	 City Limit
 Historic District	

# MECKLENBURG COUNTY, NC GIS PUBLIC ACCESS SYSTEM



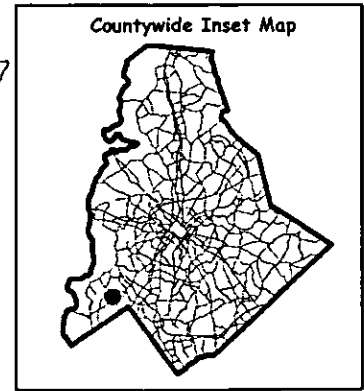
Tax Parcel-Id#s Selected: See Tax Information Report for List of Parcel-Id#s

Tax Book & Page Selected: N/A

02-102

**LEGEND**

- County Boundary
- Rivers/Creeks/Streams
- Railroad ROW
- Water Bodies
- Jurisdictions**
- County
- Charlotte
- Cornelius
- Davidson
- Huntersville
- Matthews
- Mint Hill
- Pineville



Scale : 1 Inch = 750 Feet

Map Created on Monday, August 26, 2002 10:52 AM

This map is prepared for the inventory of real property within Mecklenburg County and is compiled from recorded deeds, plats, tax maps, surveys, planimetric maps, and other public records and data. Users of this map are hereby notified that the aforementioned public primary information sources should be consulted for verification. Mecklenburg County and its mapping contractors assume no legal responsibility for the information contained herein.

# MECKLENBURG COUNTY, NC GIS PUBLIC ACCESS SYSTEM

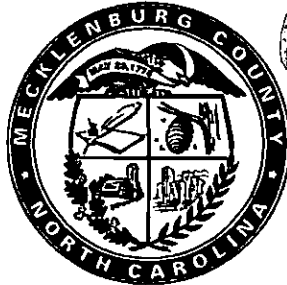


Tax Parcel-Id#s Selected: See Tax Information Report for List of Parcel-Id#s

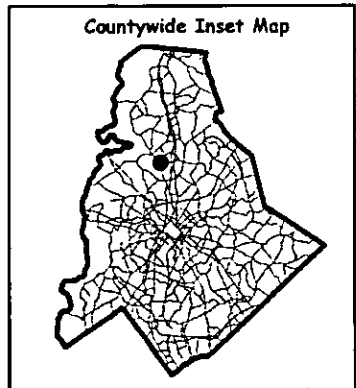
Tax Book & Page Selected: N/A

**LEGEND**

- County Boundary
- Rivers/Creeks/Streams
- Railroad ROW
- Water Bodies



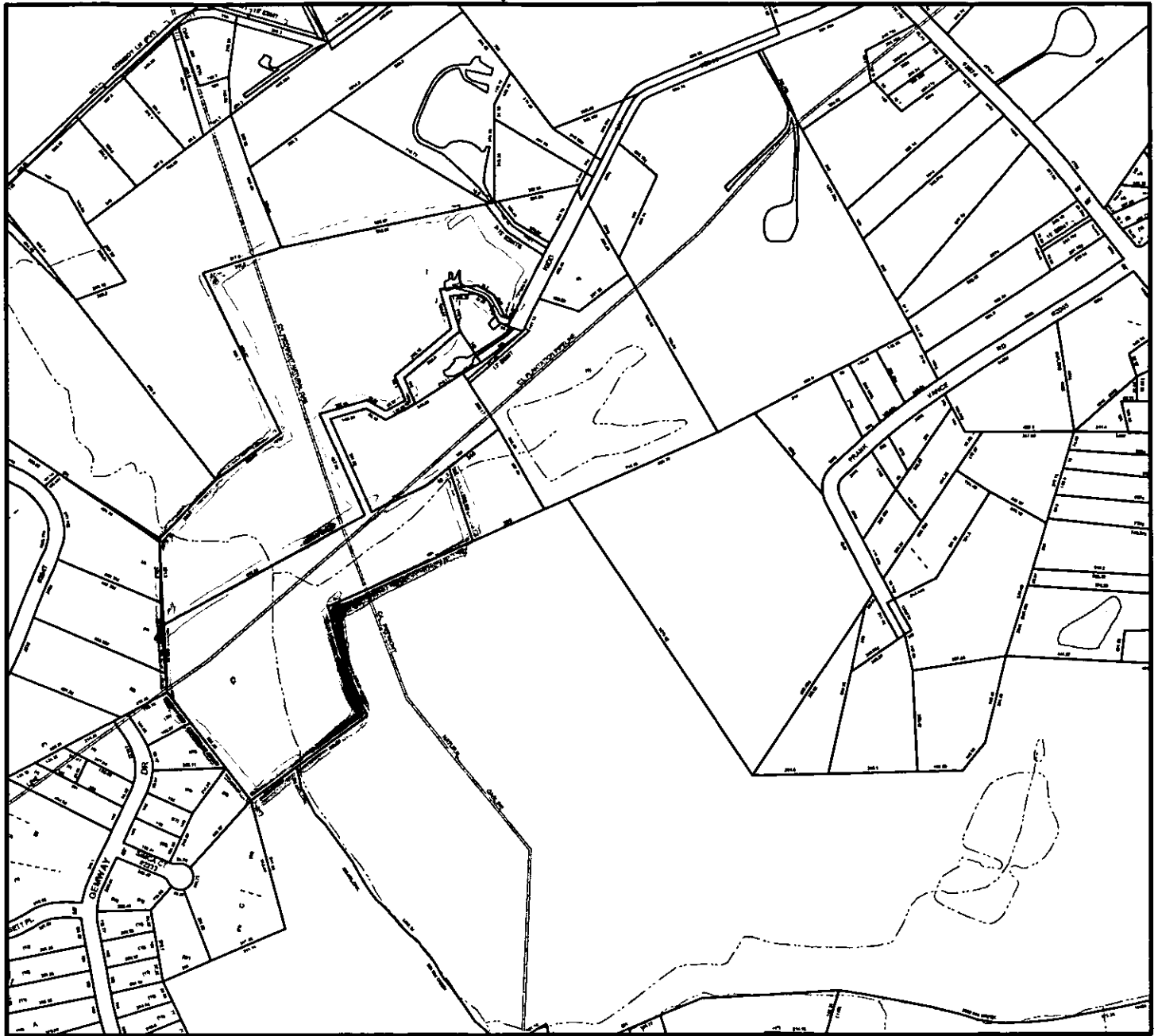
02/104



Scale : 1 Inch=800 Feet  
Map Created on Monday, August 26, 2002 11:35 AM

This map is prepared for the inventory of real property within Mecklenburg County and is compiled from recorded deeds, plats, tax maps, surveys, planimetric maps, and other public records and data. Users of this map are hereby notified that the aforementioned public primary information sources should be consulted for verification. Mecklenburg County and its mapping contractors assume no legal responsibility for the information contained herein.

# MECKLENBURG COUNTY, NC GIS PUBLIC ACCESS SYSTEM



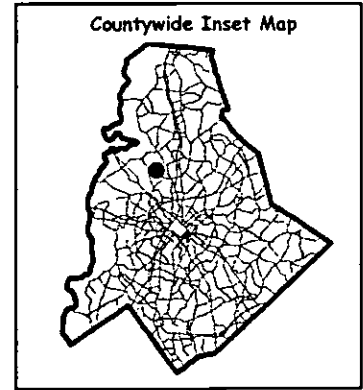
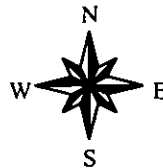
Tax Parcel-Id#s Selected: See Tax Information Report for List of Parcel-Id#s

Tax Book & Page Selected: N/A

02-105

**LEGEND**

- County Boundary
- Rivers/Creeks/Streams
- Railroad ROW
- Water Bodies

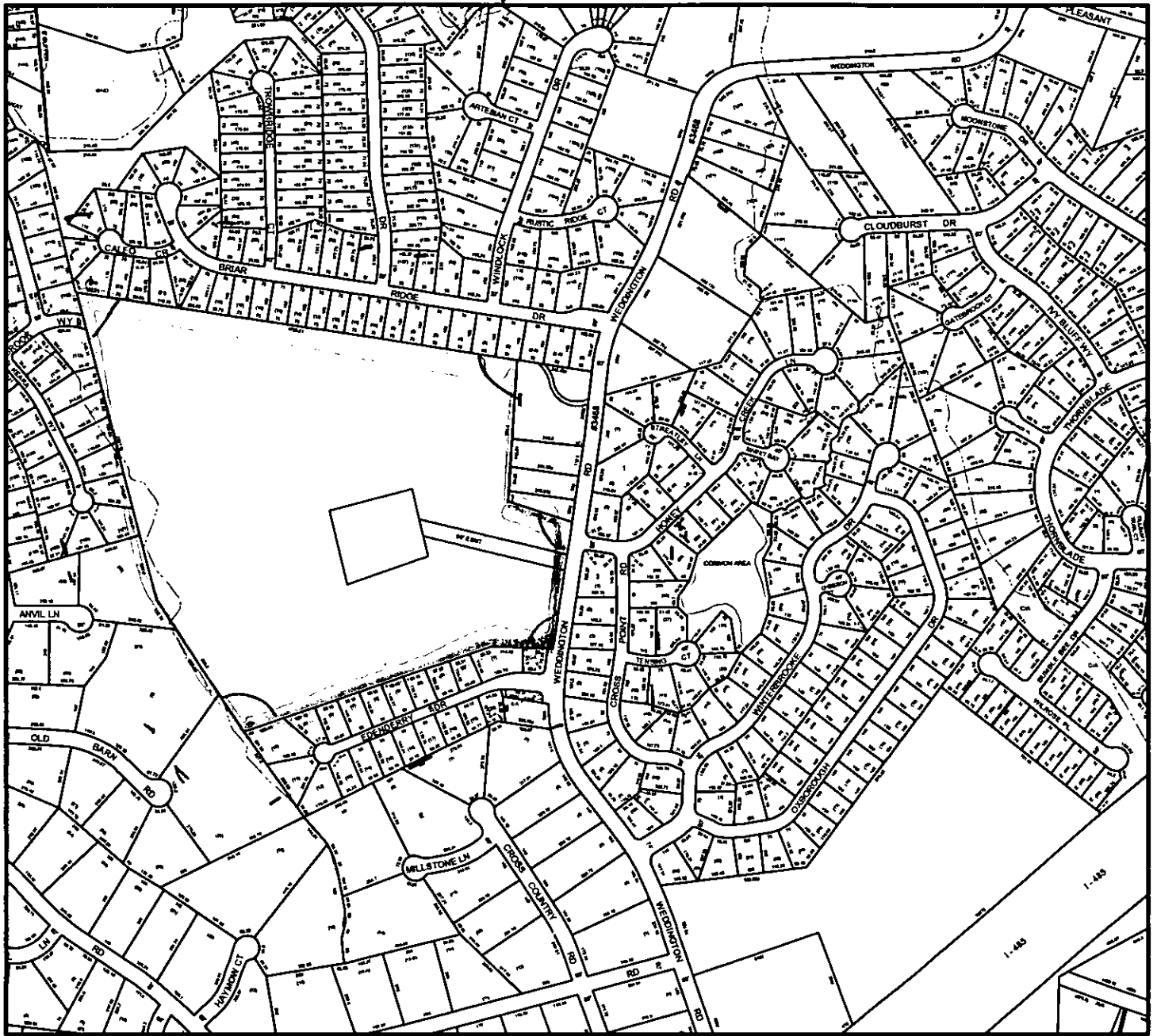


Scale : 1 Inch = 600 Feet

Map Created on Monday, August 26, 2002 11:54 AM

This map is prepared for the inventory of real property within Mecklenburg County and is compiled from recorded deeds, plats, tax maps, surveys, planimetric maps, and other public records and data. Users of this map are hereby notified that the aforementioned public primary information sources should be consulted for verification. Mecklenburg County and its mapping contractors assume no legal responsibility for the information contained herein.

# MECKLENBURG COUNTY, NC GIS PUBLIC ACCESS SYSTEM



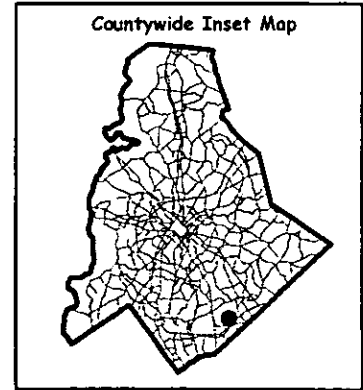
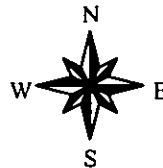
Tax Parcel-Id#s Selected: See Tax Information Report for List of Parcel-Id#s

Tax Book & Page Selected: N/A

02-106

**LEGEND**

- County Boundary
- Rivers/Creeks/Streams
- Railroad ROW
- Water Bodies



Scale : 1 Inch = 600 Feet

Map Created on Monday, August 26, 2002 12:12 PM

This map is prepared for the inventory of real property within Mecklenburg County and is compiled from recorded deeds, plats, tax maps, surveys, planimetric maps, and other public records and data. Users of this map are hereby notified that the aforementioned public primary information sources should be consulted for verification. Mecklenburg County and its mapping contractors assume no legal responsibility for the information contained herein.