



* 0 0 B R E A K 0 0 *



**ADVANCED
IMAGING
SYSTEMS**

www.aisimc.com

An Information
Management Company

City of Charlotte – Planning Dept. Scanning Rezoning Files

Petition # _____

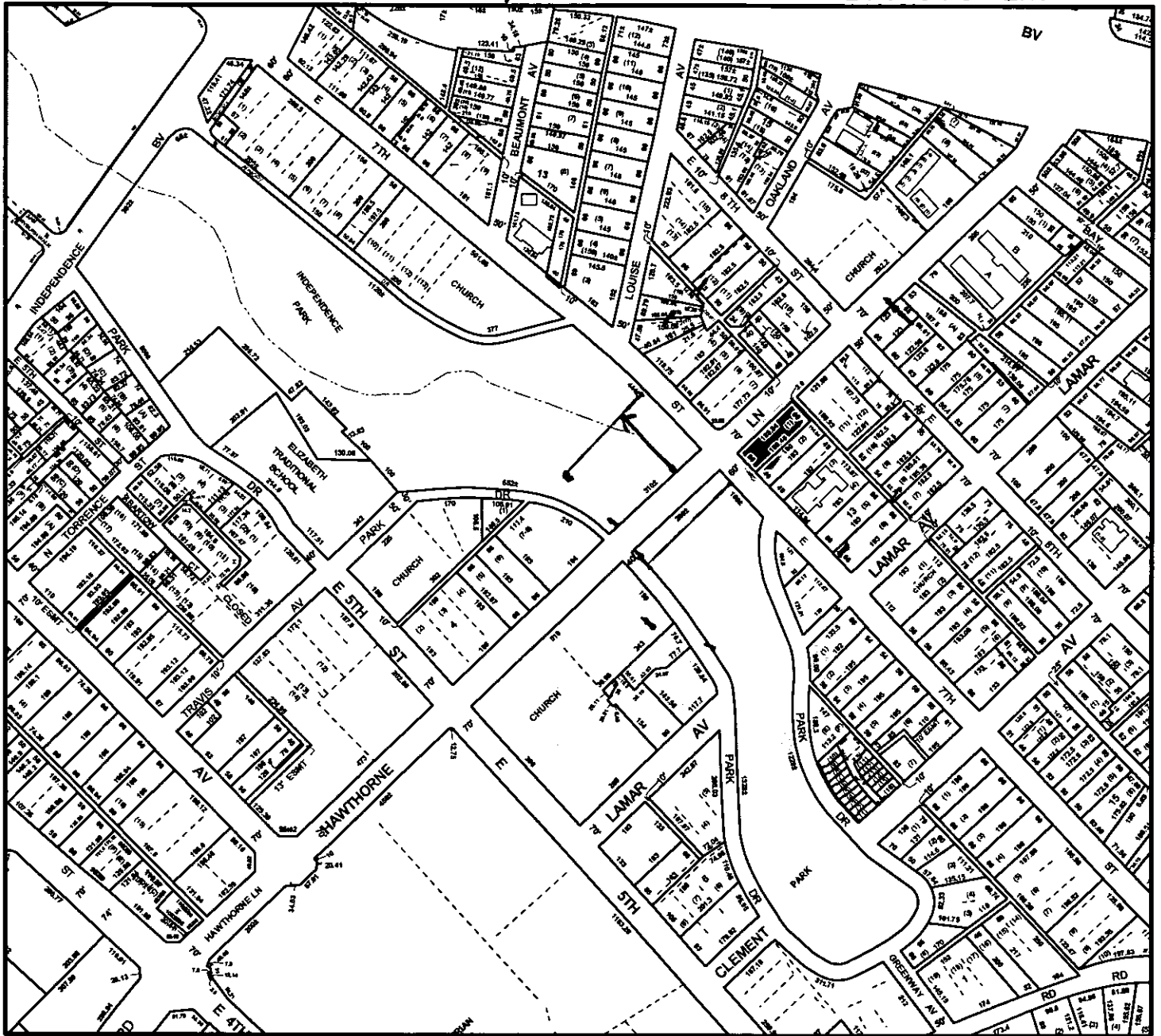
Document type:

- Applications
- Correspondence
- Department Comments
- Land Use Consistency
 - Mail Info
 - Mapping
 - Other
- Site Plans



* 0 0 B R E A K 0 0 *

MECKLENBURG COUNTY, NC GIS PUBLIC ACCESS SYSTEM



Tax Parcel-Ids Selected: See Tax Information Report for List of Parcel-Ids#

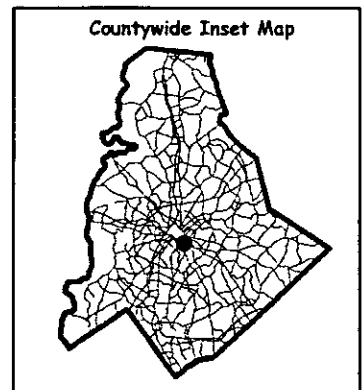
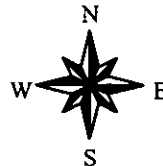
Tax Book & Page Selected: N/A

LEGEND

- County Boundary
- Rivers/Creeks/Streams
- Railroad ROW
- Water Bodies
- Jurisdictions**
- County
- Charlotte
- Cornelius
- Davidson
- Huntersville
- Matthews
- Mint Hill
- Pineville



108



Scale : 1 Inch = 400 Feet
 Map Created on Friday, July 19, 2002 11:10 AM

This map is prepared for the inventory of real property within Mecklenburg County and is compiled from recorded deeds, plats, tax maps, surveys, planimetric maps, and other public records and data. Users of this map are hereby notified that the aforementioned public primary information sources should be consulted for verification. Mecklenburg County and its mapping contractors assume no legal responsibility for the information contained herein.

Petition #: 2002-108

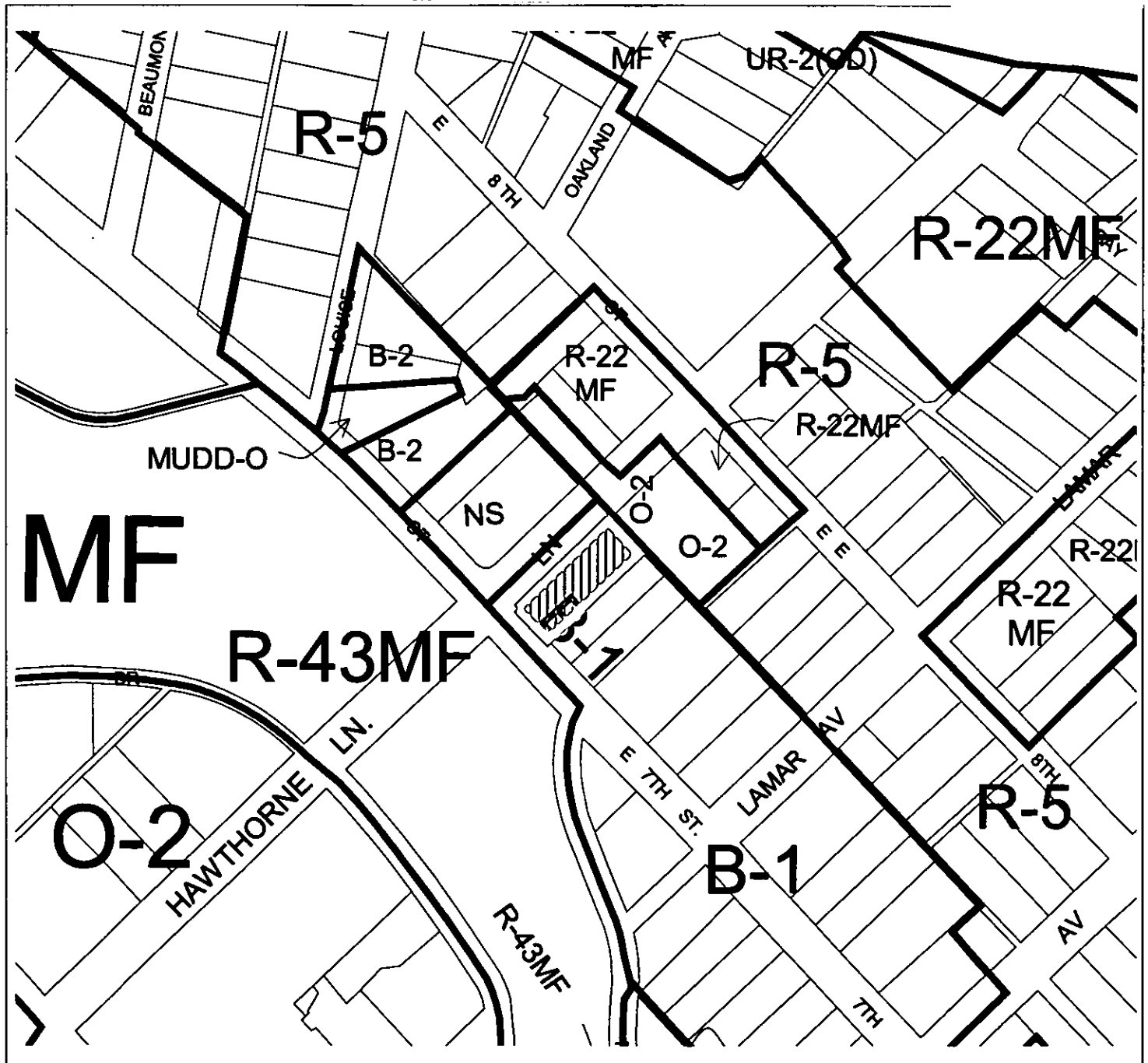
Petitioner: JDH Development

Hearing Date: October 23, 2002

Zoning Classification (Existing): B-1

Zoning Classification (Requested): MUDD-Optional

Acreage & Location Approximately 0.28 acres located at the northeast corner of Hawthorne Lane and East Seventh Street



Zoning Map #(s);

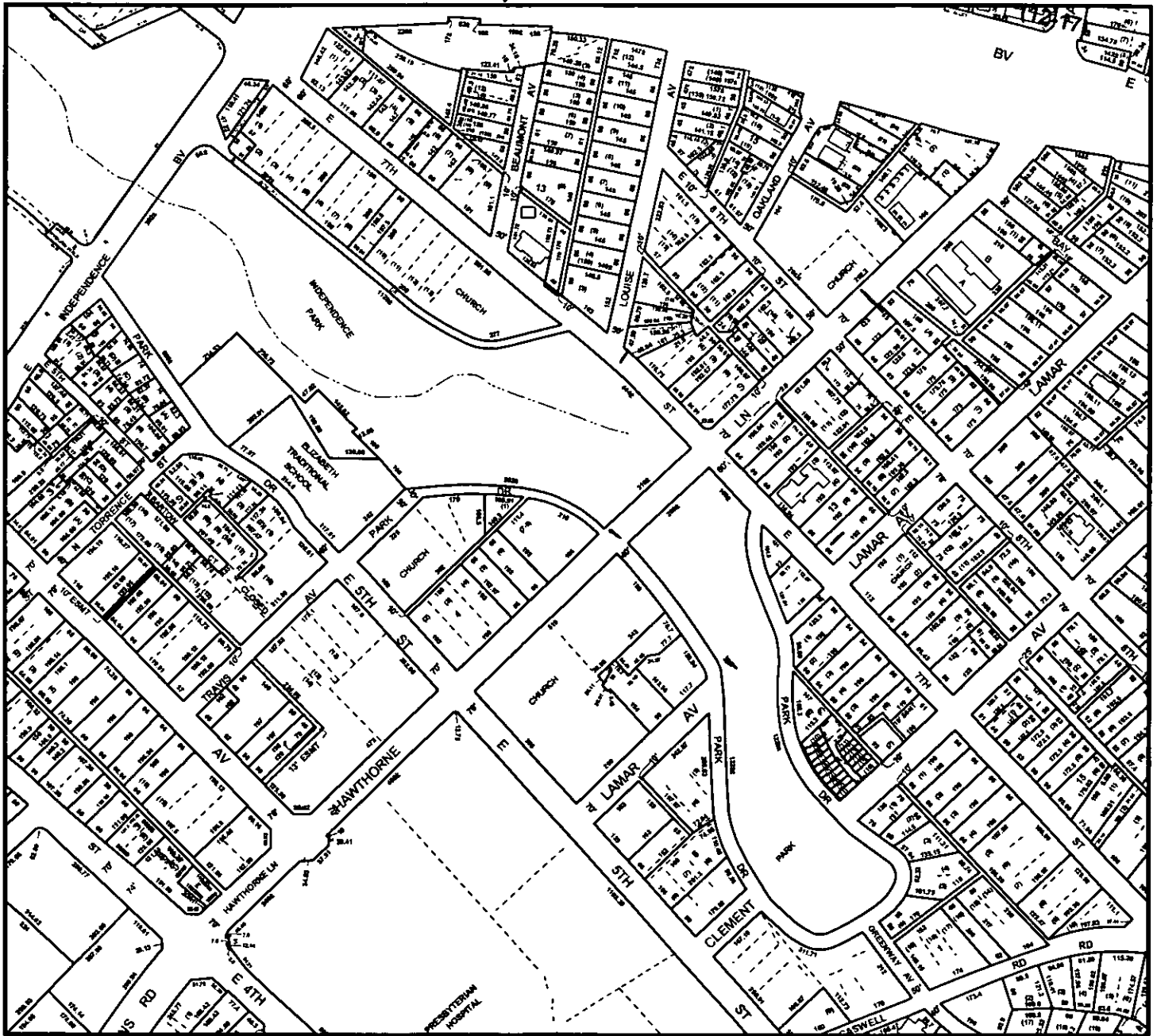
101,102

Charlotte-Mecklenburg Planning Commission

Map Legend

	ETU		Platting/Map
	Altitude/Top		County Line
	Waterford		City Limit/parc
	Historic District		

MECKLENBURG COUNTY, NC GIS PUBLIC ACCESS SYSTEM



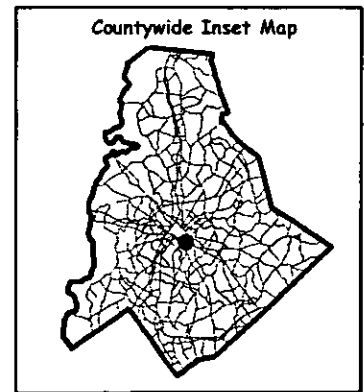
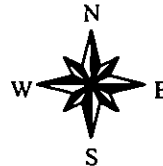
Tax Parcel-Ids Selected: See Tax Information Report for List of Parcel-Ids

Tax Book & Page Selected: N/A

02 108

LEGEND

- County Boundary
- Rivers/Creeks/Streams
- Railroad ROW
- Water Bodies



Scale : 1 Inch = 400 Feet

Map Created on Friday, September 27, 2002 03:13 PM

This map is prepared for the inventory of real property within Mecklenburg County and is compiled from recorded deeds, plats, tax maps, surveys, planimetric maps, and other public records and data. Users of this map are hereby notified that the aforementioned public primary information sources should be consulted for verification. Mecklenburg County and its mapping contractors assume no legal responsibility for the information contained herein.