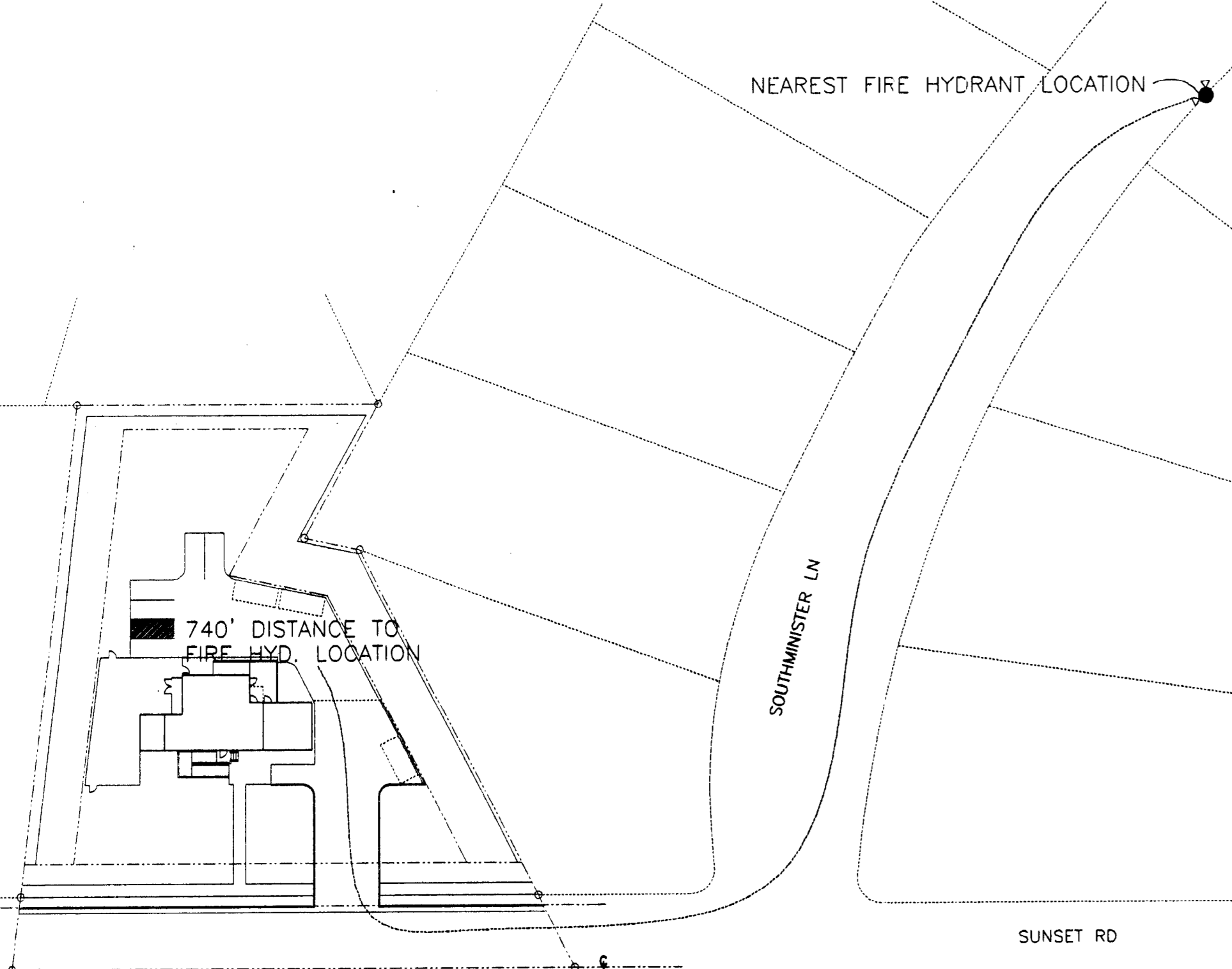


1 SITE PLAN
S-1 SCALE: 1"=20'



2 FIRE HYDRANT LOCATION
S-1 SCALE: 1"=50'

GENERAL NOTES:

- REDUCED PRESSURE PRINCIPLE ASSEMBLIES (RP) MUST CONFORM TO CMU SPECIFICATIONS. REFER TO CMU APPROVED LIST OF BPA'S.
- CMU APPROVED RP INCLUDES SHUT-OFF VALVES #1 AND #2 AS PART OF THE ASSEMBLY. NO SUBSTITUTIONS SHALL BE PERMITTED.
- TEST COCK #1 SHALL BE UPSTREAM OF SHUT-OFF VALVE #1 AND IS PART OF THE APPROVED ASSEMBLY.
- PIPE MATERIAL AND FITTINGS SHALL BE AS SPECIFIED IN CMU STANDARDS & SPECIFICATIONS.
- INSULATED ENCLOSURE SHALL BE AS SPECIFIED IN CMU STANDARDS & SPECIFICATIONS.
- ALL LOCATIONS FOR BPA'S REQUIRE CMU APPROVAL.
- NO TAPS, BRANCHES, FH'S OR OTHER ACCESSORIES ARE PERMITTED ON THE PIPING BETWEEN THE BPA & METER.

PARKING REQUIREMENTS
SCREENED PER 12.300

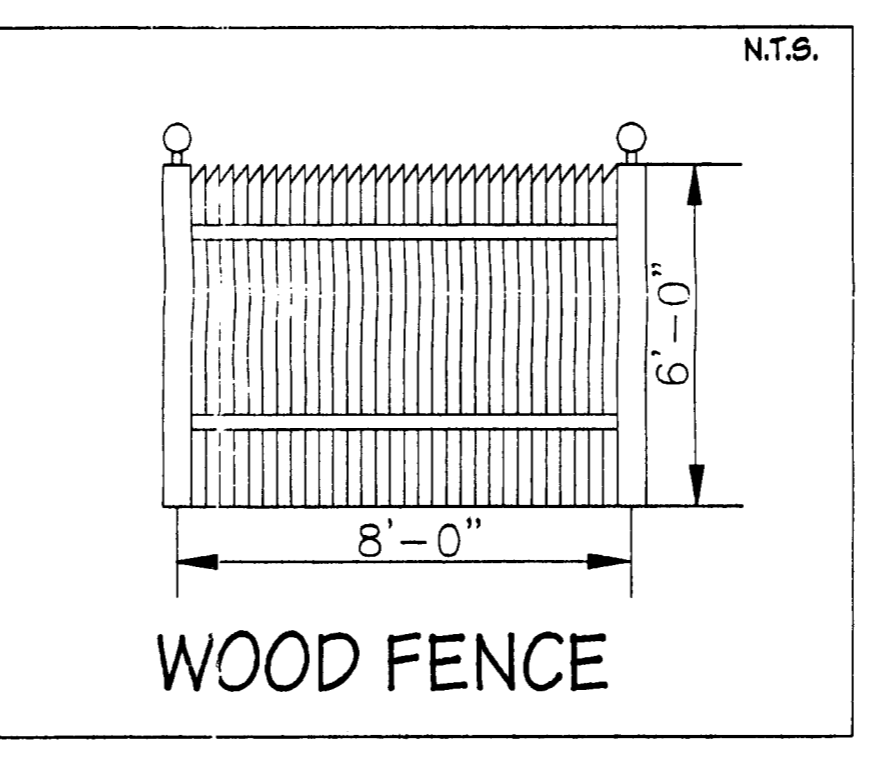
- 1 SPACE PER 10 CHILDREN = 3
- 1 SPACE PER ATTENDANT = 4
- 1 H.C. VAN ACCESSIBLE SPACE
- 8 REQ. 9 SHOWN

SITE DATA TABLE

- ACREAGE - 0.84 ACRES
- EXISTING ZONING - R3
- PROPOSED ZONING - INSTITUTIONAL CD
- PROPOSED NUMBER OF CHILDREN = 33
- SIZE OF EXISTING BLDG. 1228 SF
- SIGN TO BE LIMITED TO 16 SF, MAX HEIGHT OF 4'

NOTES

- .084 AC - CLASS "C" BUFFER REQUIRED PER 12.302 FENCE TO BE OF WOOD, 6' HIGH WHERE SHOWN
- FOR 40% PERCENT OF TREES TO BE LARGE MATURING 2" DIA, 6 INCHES ABOVE THE GROUND
- THERE SHALL BE 3 TREES PER 100'
- PARKING TO BE SCREENED AS SHOWN PER 12.303A



WOOD FENCE
BUFFER FENCE and DUMPSTER ENCLOSURE

BUFFER YARD REQUIREMENTS:

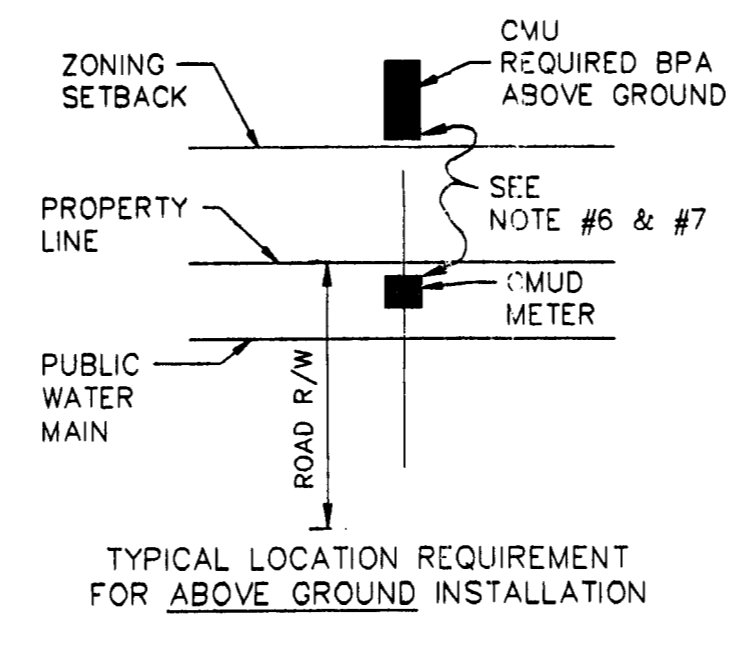
LARGE TREES TO BE: 25 LOBLOLLY PINES (PINUS TAEDA)

SMALL TREES TO BE: 0 LAGERSTROEMIA INDICA (CRAPE MYRTLE)

SHURBS TO BE: 9 ILEX CORNUTA BURFORDI (BURFORD HOLLY)
0 IPHOTINIA GLABRA (RED-TIPPED FOTINIA)

FRONTAGE & SCREENING REQUIREMENTS:

SMALL TREES TO BE: 6 LAGERSTROEMIA INDICA (CRAPE MYRTLE)

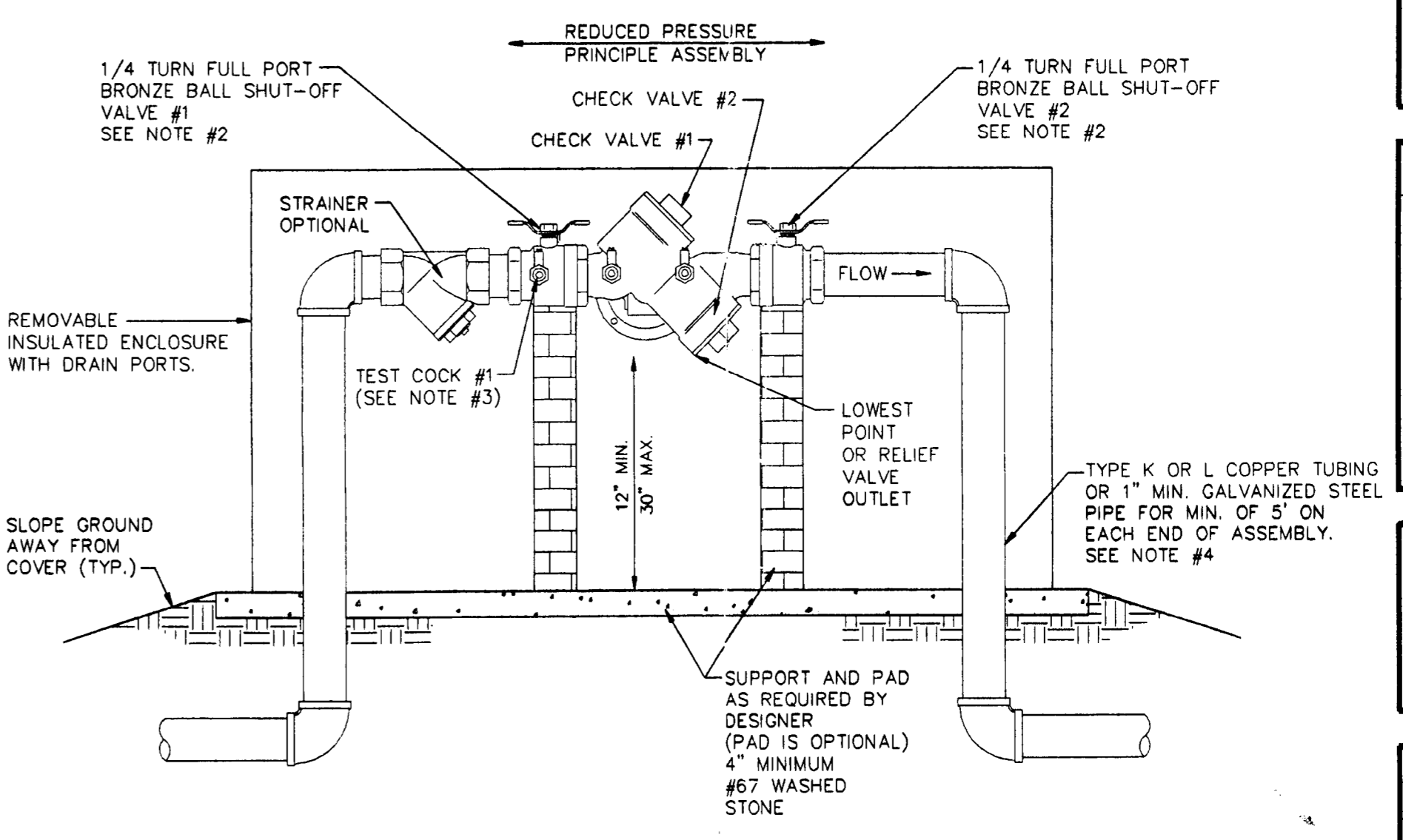


BACKFLOW PREVENTER NOTES:

REQUIREMENTS FOR BACKFLOW PREVENTION ASSEMBLY INSTALLATION

- INSTALL ASSEMBLY BEFORE ANY BRANCHES IN NEW SYSTEM OUTSIDE ZONING AREAS. PER CMU STANDARD DETAILS, ON FIRE LINES SHUT-OFF VALVES, SHALL BE OS&Y TYPE, AND BE PROVIDED WITH SUPERVISORY TAMPER SWITCHES WITH TROUBLE SIGNAL TO GO TO THE EMERGENCY CONTROL STATION AS REQUIRED BY CURRENT BUILDING CODE.
- LOCATE 12" ABOVE GROUND MIN. 30" MAX. IN HORIZONTAL DIRECTION. 30" MIN. CLEAR OF ANY PERMANENT OBSTRUCTION. NO STAINERS SHALL BE INSTALLED ON FIRE SYSTEMS.
- USE TYPE "L" OR "K" COPPER, D.I.P. (3"-10") OR GALVANIZED STEEL PIPE (1" DIA. MIN.), FROM 5' BEFORE TO 5' PAST ASSEMBLY.
- PROTECTIVE STRUCTURE REQUIRED WITH INSULATED PROTECTION 7.4R FACTOR MINIMUM. INSULATION SHALL NOT BE WRAPPED AROUND ASSEMBLY. ALL ASSEMBLIES USED ON FIRE LINE SERVICES SHALL BE PROTECTED TO MIN. 40 DEGREES OR AS REQUIRED BY CURRENT BUILDING CODE.
- LOCATION OF CONNECTION AND BACKFLOW PREVENTION ASSEMBLY WILL BE LOCATED OUTSIDE AND ACCESSIBLE TO CMU AT ALL TIMES.
- IF UNIONS ARE USED (3/4"-2"), CAPS MUST BE PROVIDED AND STORED WITH ASSEMBLY. FOR USE ANY TIME THE UNIONS ARE REMOVED, IT IS REQUIRED TO CAP REMAINING PIPING TO SERVICE LINE AND IS SUBJECT TO CMU AT ANY TIME ASSEMBLY IS REMOVED.
- ASSEMBLY REQUIRED TO BE INSTALLED BY A NC STATE LICENSED PLUMBER, UTILITY CONTRACTOR, OR NC STATE LICENSED FIRE SPRINKLER CONTRACTOR.
- THERE SHALL BE NO TAPS, PIPING BRANCHES, UNAPPROVED BYPASS PIPING, HYDRANTS, FIRE DEPT. CONNECTION POINTS, OR OTHER WATER-USING APPURTENANCES CONNECTED TO THE SUPPLY LINE BETWEEN ANY WATER METER AND ITS CMU-REQUIRED BACKFLOW PREVENTERS.
- 1 1/2" REDUCED PRESSURE PRINCIPLE BACKFLOW PREVENTION ASSEMBLY INSTALLED ABOVE GROUND WITHIN INSULATED ENCLOSURE PER CMU REQUIREMENTS. ENCLOSURE TO INCLUDE 3" X 6 1/2" DRAIN PORTS/WEEPHOLES FOR DISCHARGE WATER ON ONE SIDE OF ENCLOSURE PER CMU REQUIREMENTS.
- EACH CMU-REQUIRED BPA IS REQUIRED TO BE TESTED BY A CMU-APPROVED CERTIFIED TESTER PRIOR TO PLACING THE WATER SYSTEM IN SERVICE.

ACCESSIBLE PARKING SIGN



BACKFLOW PREVENTER DETAIL
SCALE: N.T.S.

Design Haus
40 Odell School Road
Suite 3
Concord, N.C. 28027
Ph.: (704) 795-7737
Fax: (704) 788-8990

CORPORATE SEAL

ARCHITECT SEAL

© Copyright Design Haus
THIS DOCUMENT IS THE PROPERTY OF DESIGN HAUS, INC. AND IS NOT TO BE REPRODUCED OR COPIED IN WHOLE OR IN PART. IT IS TO BE USED FOR THE PROJECT AND FOR THE SPECIFIC CLIENT AND NO OTHER. IT IS TO BE RETURNED UPON REQUEST. DESIGN HAUS, INC. HAS NO LIABILITY FOR THE CONTENTS OF THIS DOCUMENT.

KIDDIE COLLEGE PRE-SCHOOL
2619 SUNSET ROAD
CHARLOTTE, N.C.

REV	DATE	DRAWN	DESCRIPTION
			ATTACHED TO ADMINISTRATIVE APPROVAL
			DATED: May 27, 2004
			BY: DEBRA D. CAMPBELL
			2003-96

SHEET TITLE

SITE PLAN

DRAWN:	JCY	CHECKED:	RDC	SHEET SIZE:	24X36
APPROVED:		PROJECT:	2004-02	DATE:	02-14-04
CAD NAME:	2004-C1	SCALE:	NO SCALE		

DRAWING NUMBER

C1

CHARLOTTE-MECKLENBURG PLANNING COMMISSION
INTER-OFFICE COMMUNICATION

DATE: May 27, 2004

TO: Robert Brandon
Zoning Administrator

FROM: Debra Campbell
Planning Director

SUBJECT: Petition 03-96, Sandra Robinson-Adams.

Attached is a copy of the revised plan for the above petition. The plan has been revised to increase the number of allowable children by 10% or three for a total of 33 children and to allow an additional 98 square feet for a total of 1,678 square feet. The plantings within the setback have also been changed to Crape Myrtle due to a power line conflict. Since these changes are minor and do not alter the intent of the approved plan, I am administratively approving this revised plan. Please use this revised plan when evaluating requests for building permits and certificates of occupancy.
Note that all other ordinance requirements still apply.