

ROADWAY ADJUSTMENTS AND CLARIFICATIONS

PRELIMINARY
DO NOT USE FOR CONSTRUCTION

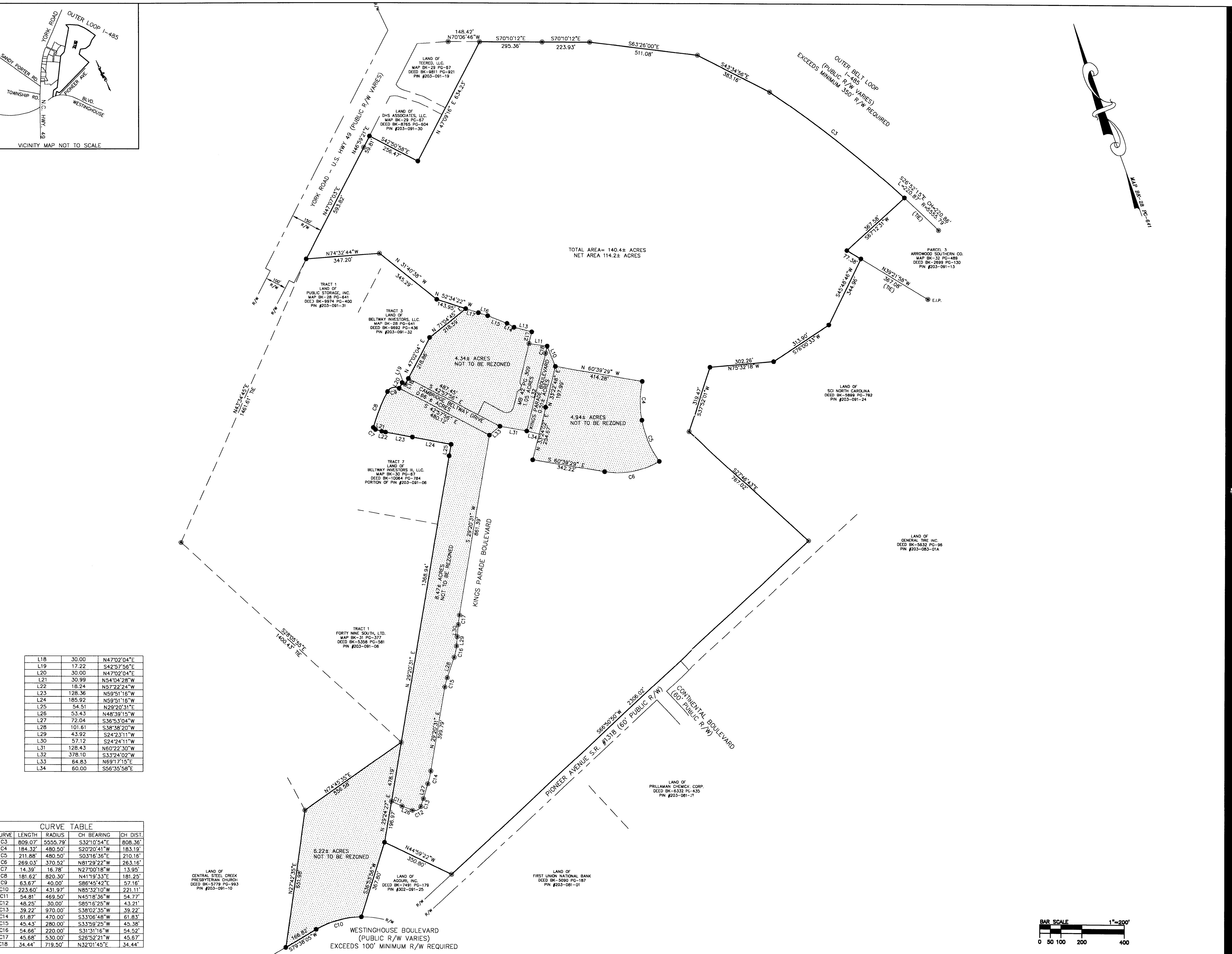
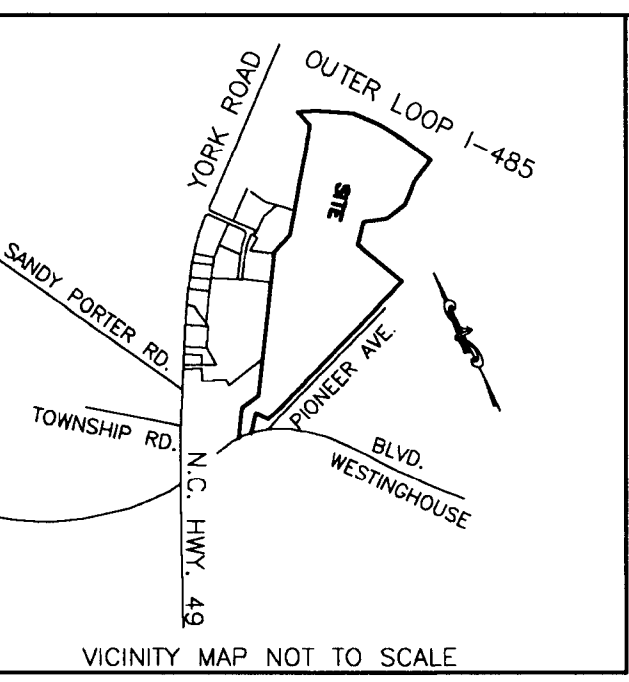
TOWN OF AYRSLEY
CHARLOTTE, NORTH CAROLINA
THE COVENANTS PLAN

Project Egr: ABC
Design By: ABC
Drawn By: ABC
Scale: 1"=100'

8720 RED OAK BOULEVARD, SUITE 420
CHARLOTTE, N.C. 28217
PHONE (704) 527-8440 FAX (704) 527-8335

A-3

NO.	BY	DATE	REVISION



CURVE	LENGTH	RADIUS	CH BEARING	CH DIST
C3	809.07	5550.79	S32°10'47"E	808.36
C4	184.32	490.92	S29°02'47"W	183.19
C5	211.88	480.50	S03°16'34"W	210.16
C6	269.63	370.52	N87°08'22"W	268.16
C7	14.39	16.76	N2°00'18"W	13.95
C8	181.62	820.30	N47°19'33"E	181.25
C9	63.67	491.00	S86°45'47"W	63.16
C10	223.60	431.97	N85°32'10"W	221.11
C11	58.81	469.50	N45°18'36"W	58.77
C12	48.92	30.00	S80°16'25"W	43.01
C13	38.22	970.00	S38°32'35"W	39.22
C14	61.87	470.00	S33°08'48"W	61.87
C15	45.43	280.00	S33°08'29"W	45.38
C16	54.66	220.00	S33°07'16"W	54.52
C17	45.88	330.00	S29°22'21"W	45.87
C18	34.44	719.50	N52°01'45"E	34.44

CURVE	LENGTH	RADIUS	CH BEARING	CH DIST
C3	809.07	5550.79	S32°10'47"E	808.36
C4	184.32	490.92	S29°02'47"W	183.19
C5	211.88	480.50	S03°16'34"W	210.16
C6	269.63	370.52	N87°08'22"W	268.16
C7	14.39	16.76	N2°00'18"W	13.95
C8	181.62	820.30	N47°19'33"E	181.25
C9	63.67	491.00	S86°45'47"W	63.16
C10	223.60	431.97	N85°32'10"W	221.11
C11	58.81	469.50	N45°18'36"W	58.77
C12	48.92	30.00	S80°16'25"W	43.01
C13	38.22	970.00	S38°32'35"W	39.22
C14	61.87	470.00	S33°08'48"W	61.87
C15	45.43	280.00	S33°08'29"W	45.38
C16	54.66	220.00	S33°07'16"W	54.52
C17	45.88	330.00	S29°22'21"W	45.87
C18	34.44	719.50	N52°01'45"E	34.44

Stantec Consulting Services Inc.
2127 Ayrsley Town Blvd, Suite 300
Charlotte, NC 28273
Tel: (704) 329-0900
Fax: (704) 329-0905
www.stantec.com

Stantec

Copyright Reserved
The Contractor shall verify and be responsible for all dimensions. DO NOT SCALE THE DRAWING - ANY ERRORS OR OMISSIONS SHALL BE REPORTED TO STANTEC WITHOUT DELAY.
The Copyrights to all designs and drawings are the property of Stantec. Reproduction or use for any purpose other than that authorized by Stantec is forbidden.

Legend
N/F - NOW OR FORMERLY
R/W - RIGHT-OF-WAY
DB / PG - DEED BOOK AND PAGE
MB / PC - MAP BOOK AND PAGE

Notes
1) THIS IS NOT A BOUNDARY SURVEY AND SHOULD NOT BE REPLIED UPON AS SUCH.
2) OWNERS OF RECORD AS SHOWN HEREON ARE TAKEN FROM PLAT REFERENCED IN NOTE 3, AND MECKLENBURG COUNTY GIS INFORMATION.
3) BOUNDARY INFORMATION (DISTANCES, BEARINGS AND AREAS) TAKEN FROM AN UNRECORDED PLAT ENTITLED BOUNDARY SURVEY OF AYRSLEY PREPARED BY THE ISAACS GROUP, INC. DATED 11/7/00 AND LAST REVISED 11/20/00 AND ALSO MB 38 PG 657, MB 42 PG 561, MB 42 PG 309, MB 42 PG 803, MB 30 PG 67 AND MB 43 PG 309 AS WELL AS ELECTRONIC DRAWINGS PROVIDED BY THE ISAACS GROUP.
4) THE SOLE PURPOSE OF THIS WORKSHEET IS TO SHOW AREAS THAT ARE SEPARATE AND EXCLUDED FROM THE REMAINING LANDS OF AYRSLEY TOWN CENTER.
5) AREA ENCOMPASSED BY THIS PLAT IS COMPRISED OF LANDS OF:
B.K. HOLDINGS, LLC (DB 11002 PG 605)
B.Y. HOLDINGS, LLC (DB 11247 PG 703, DB 11002 PG 605, & DB 12008 PG268) BY HOLDINGS, LLC (DB 10343 PG 505)
AYRSLEY RETAIL DEVELOPMENT, LLC (DB 14448 PG 919)
AYRSLEY ARCADE DEVELOPMENT GROUP, LLC (DB 17200 PG 645)
AYRSLEY LAND PARTNERS, LLC (DB 15039 PG 233)
AYRSLEY RETAIL DEVELOPMENT GROUP, LLC (DB 15539 PG 237)

2. REVISE CONFIGURATION OF PARCELS ROB WJJ 09.29.05
1. REMOVE AREAS A-D ROB WJJ 08.19.05
Revision DW: CMG MW.DD.YY

170303075-B ROB WJJ N/A 07.27.05
File Name: DW Chkd Dgn: MW.DD.YY

Permit-Seal

Client/Project
AYRSLEY DEVELOPMENT CORP.
6100 FAIRVIEW ROAD SUITE 650
CHARLOTTE, N.C. 28210

Title
PLANNING WORKSHEET FOR
AYRSLEY TOWN CENTER
MECKLENBURG COUNTY, NORTH CAROLINA

Project No: 170303075 Scale: 1"=200' Date: 07-27-05
Sheet: A-4 Revision: 2