

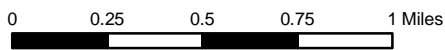
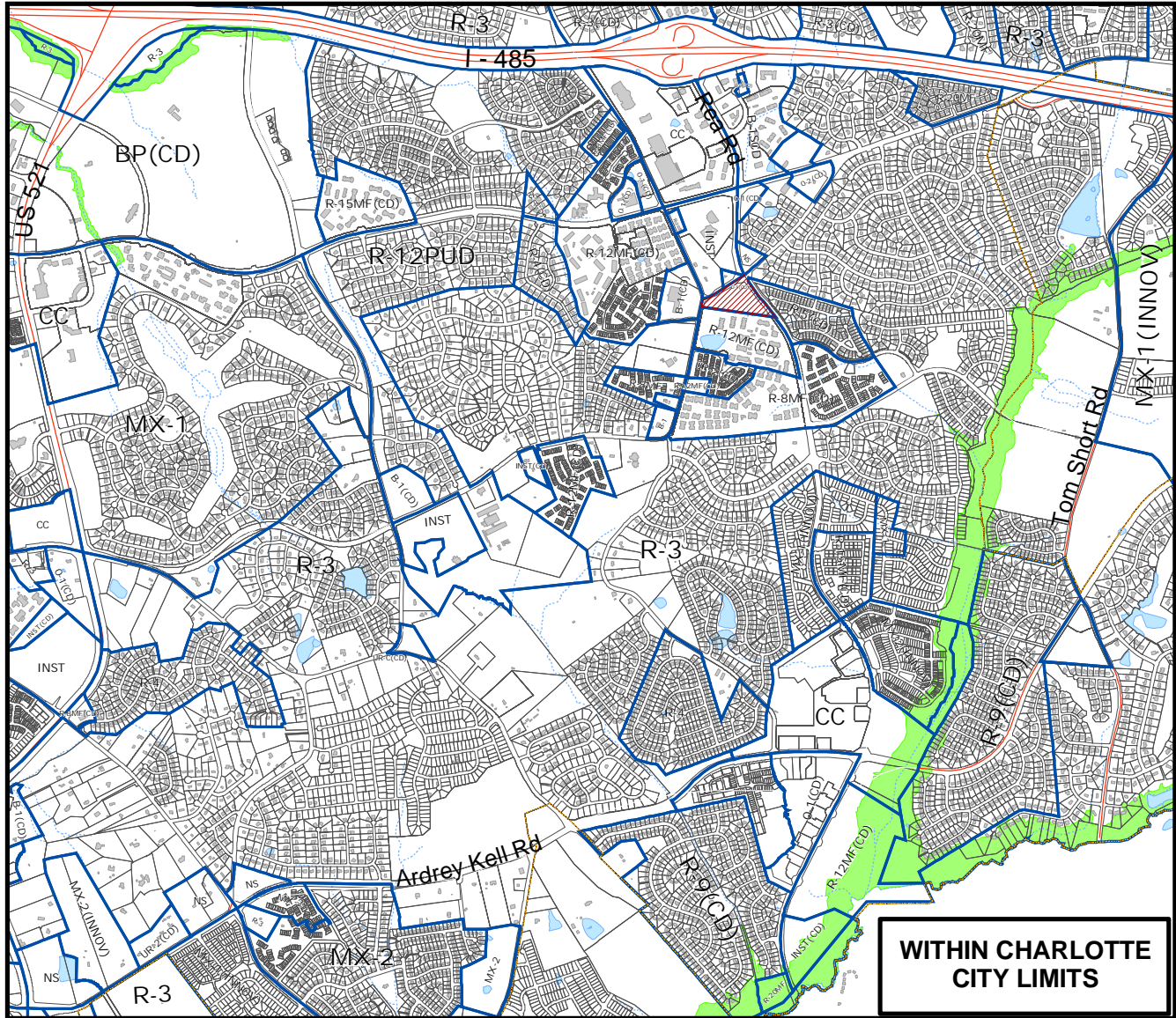
Petition #: **2006-081**

Petitioner: Pembroke Partners Limited Partnership

Zoning Classification (Existing): R-3
(Single-family residential, up to 3 dwelling units per acre)

Zoning Classification (Requested): NS
(Neighborhood services)

Acreage & Location : Approximately 6.69 acres located south of Williams Pond Ln between Elm Lane and Rea Road



Zoning Map #(s) **181**

Map Produced by the
Charlotte-Mecklenburg Planning Commission
06-28-2006

