

CONTACT:
BABAK EMADI
 URBANA
 3116 NORTH DAVIDSON STREET SUITE 230
 CHARLOTTE, NC 28205
 704.334.1648 P
 704.334.1649 F
 babak@urbana-architecture.com

NoDa HERRIN TOWERS
 CITY OF CHARLOTTE
 MECKLENBURG COUNTY
 NORTH CAROLINA

PETITIONER:
 HALF MOON OF UNION LLC
 1734 UNIVERSITY COMMERCIAL PL
 CHARLOTTE, NC 28213

SURVEY
REZONING PETITION
#2004-42

FOR PUBLIC HEARING

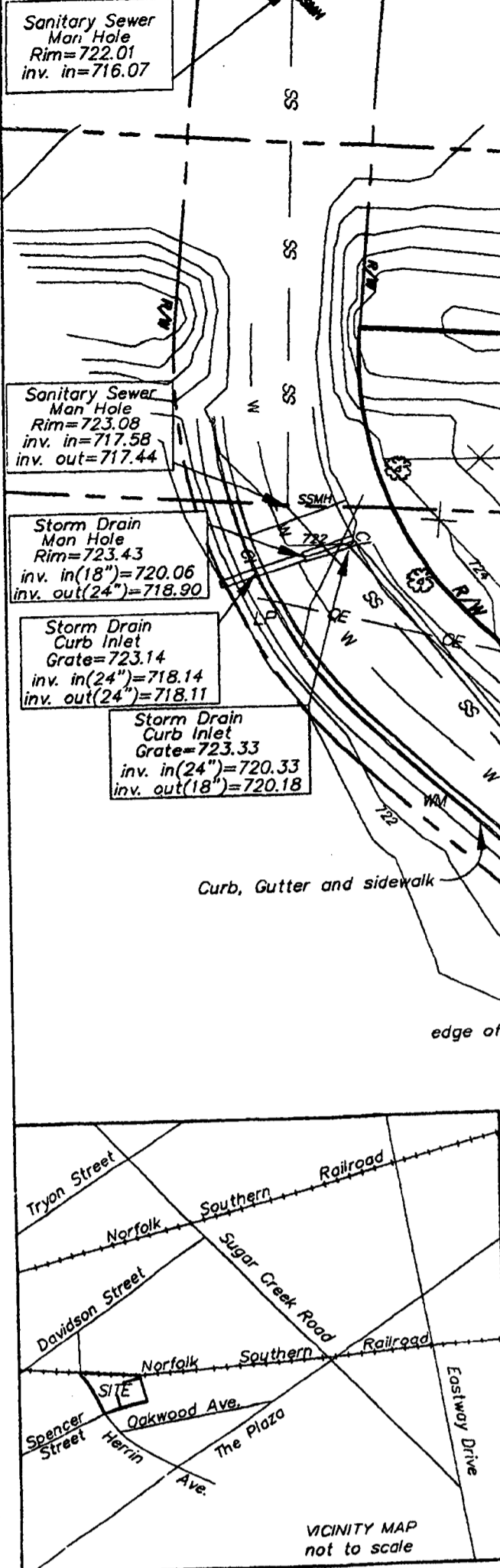
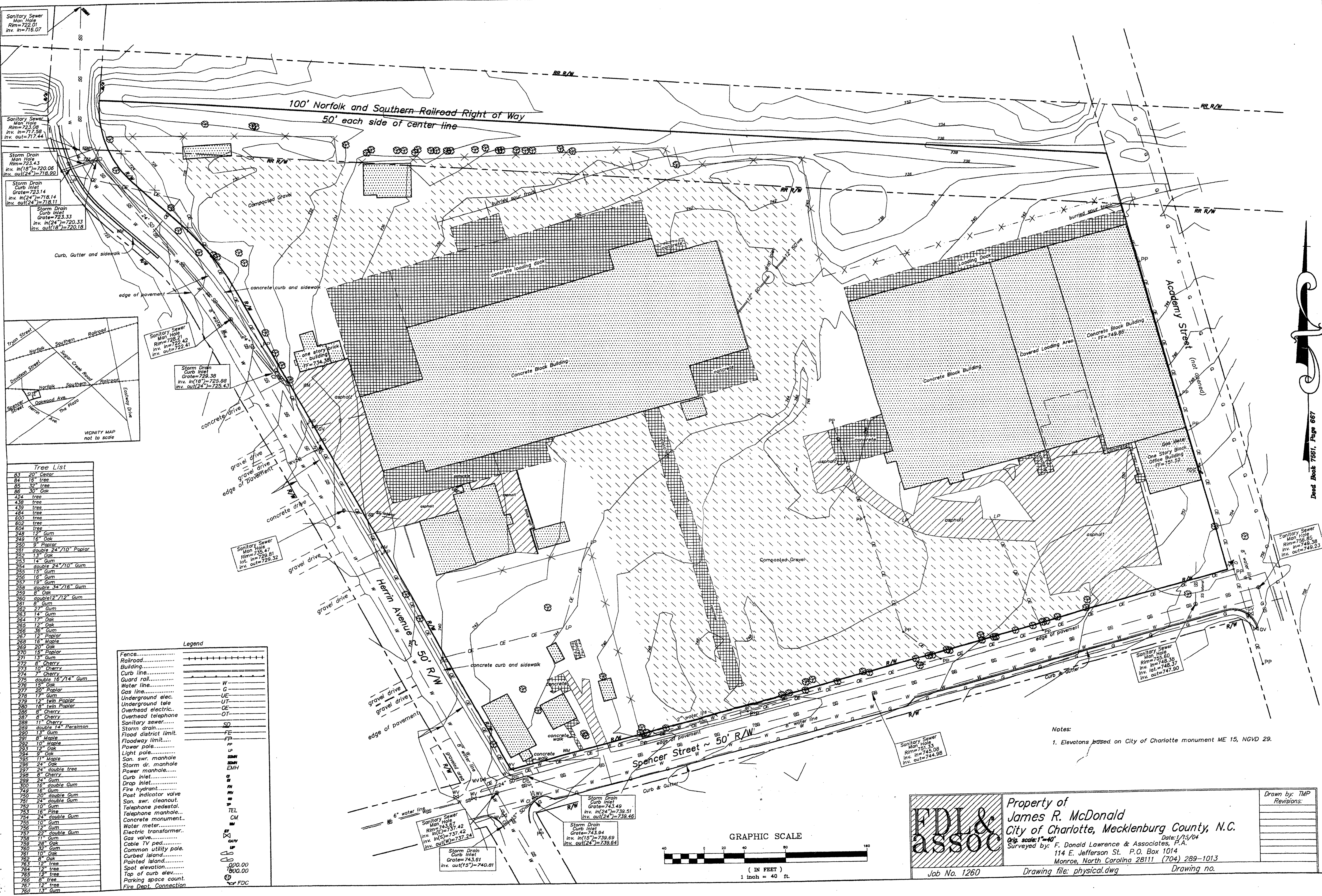
REVISIONS:
MARCH 19, 2004
 (NO REVISIONS TO THIS SHEET)

NO REVISIONS TO THIS SHEET

• JANUARY 26, 2004
 20c-4

Final
3 OF 3

ORIGINAL (WHEN RE)

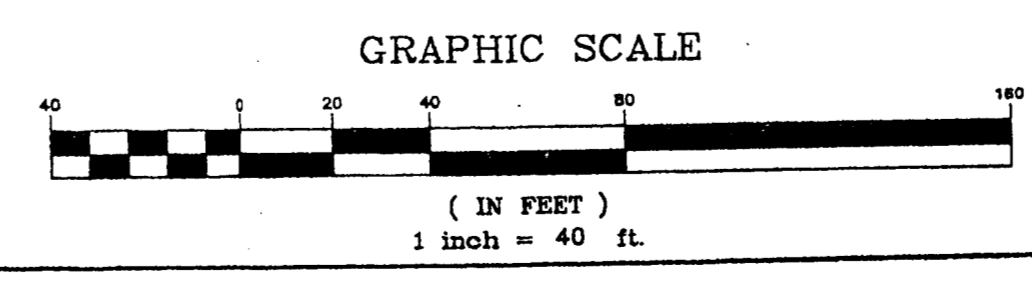


Tree List

83	20"	Cedar
84	18"	tree
85	30"	Oak
86	30"	Oak
424		tree
430		tree
431		tree
484		tree
E00		tree
604		tree
248	12"	Gum
249	16"	Oak
250	9"	Poplar
251	double 24"/10"	Poplar
252	13"	Oak
253	14"	Gum
254	double 24"/10"	Gum
255	15"	Gum
256	16"	Gum
257	19"	Gum
258	double 34"/16"	Gum
259	8"	Oak
260	double 12"/12"	Gum
261	8"	Gum
262	22"	Gum
263	14"	Gum
264	17"	Oak
265	12"	Oak
266	36"	Gum
267	12"	Poplar
268	16"	Maple
269	20"	Oak
270	15"	Poplar
271	13"	Gum
272	8"	Cherry
273	10"	Cherry
274	7"	Cherry
275	double 16"/14"	Gum
276	13"	Oak
277	20"	Poplar
278	17"	Gum
279	12"	Wal Poplar
280	16"	Wal Poplar
286	8"	Cherry
287	8"	Cherry
288	11"	Cherry
289	double 14"	Perseimon
290	13"	Gum
291	8"	Maple
292	10"	Maple
293	12"	Oak
294	9"	Oak
295	11"	Maple
296	24"	Oak
297	24"	double tree
298	8"	Cherry
299	24"	Gum
300	16"	double Gum
301	16"	Gum
750	20"	double Gum
751	24"	double Gum
752	10"	Gum
753	16"	Pine
754	24"	double Gum
755	10"	Gum
756	12"	Gum
757	22"	double Gum
758	10"	Gum
759	28"	Oak
760	32"	Gum
761	12"	Oak
762	8"	Oak
763	12"	tree
764	12"	tree
765	12"	tree
766	8"	tree
767	12"	tree
768	13"	Gum

Legend

Fence
Railroad
Building
Curb line
Guard rail
Water line	W
Gas line	G
Underground elec.	UC
Underground tele	UT
Overhead electric	OE
Overhead telephone	OT
Sanitary sewer	SS
Storm drain	SD
Flood district limit	FD
Floodway limit	FL
Power pole	PP
Light pole	LP
San. swr. manhole	SM
Storm dr. manhole	SMH
Power manhole	PM
Curb inlet	CI
Drop inlet	DI
Fire hydrant	FD
Post indicator valve	PIV
San. swr. cleanout	SC
Telephone pedestal	TP
Telephone manhole	TM
Concrete monument	CM
Water meter	WM
Electric transformer	ET
Gas valve	GV
Cable TV ped.	CTV
Common utility pole	CUP
Curbed island	CI
Painted island	PI
Spot elevation	000.00
Tap of curb elev.	800.00
Parking space count	PC
Fire Dept. Connection	FDC



FDI & Assoc
 Property of James R. McDonald
 City of Charlotte, Mecklenburg County, N.C.
 Date: 1/15/04
 Surveyed by: F. Donald Lawrence & Associates, P.A.
 114 E. Jefferson St. P.O. Box 1014
 Monroe, North Carolina 28111 (704) 289-1013
 Job No. 1260 Drawing file: physical.dwg Drawing no.

Notes:
 1. Elevations based on City of Charlotte monument ME 15, NGVD 29.

Deed Book 7661, Page 667