



Charlotte-Mecklenburg Planning Department

DATE: August 17, 2012

TO: Mark Fowler
Zoning Supervisor

FROM: Debra Campbell
Planning Director

SUBJECT: Administrative Approval for Petition No. 2007-103 NRI Communities
Charlotte, LLC: Parcel 22323158

Attached are revised elevations for the above referenced rezoning petition. Since this change does not alter the intent of the development and meets the requirements of the Charlotte Zoning Ordinance Section 6.207 Alterations to Approval, minor changes, I am administratively approving this plan. Please use these plans when evaluating requests for building permits and certificates of occupancy.

Note all other Zoning Ordinance and conditional requirements still apply.

ATTACHED TO ADMINISTRATIVE
APPROVAL

DATED: 8-17-2012 *df*

BY: DEBRA D. CAMPBELL



NOTES:

1. SUBMIT SAMPLES TO OWNER PRIOR TO ORDER/PURCHASE.

Substitutions can be made with Owner/Architect's approval.

MASONRY SUBSTITUTIONS:

1. Brick and/or Decorative Block Samples: Submit 3 samples of each type of exposed brick required. Include in each set the full range of color and texture to be expected in the completed work. Archibed review will be for color and texture only. Compliance with all other requirements is the exclusive responsibility of the Contractor.

2. Mock-Up Example Panel: Erect two sample wall panels of brick at project site. Build panels 4'-0" long and 4'-0" high. Panels shall show proposed material, method of laying, workmanship, installation of reinforcing and color of mortar. Contractor shall be responsible for maintaining sample panels throughout the construction period and the removal of panels after the job is completed. Panels shall be the standard of construction of all brick masonry. See elevations including mock-up view.

3. Product Handling: Store materials under cover, in dry place, and in manner to prevent damage or intrusion of foreign matter.

EXTERIOR FINISH SCHEDULE			
MASONRY SCHEDULE			
MASONRY TYPE	PRODUCT	NO./COLOR	MANUFACTURER
TYPE 1	Arch. Split-Face CMU 4" x 8" x 16"	#3059 Bymes Tan	CEMEX
TYPE 2	Brick (Mock-Up) Texture: Wirecut	#117 Red	TAYLOR CLAY PRODUCTS
TYPE 2A	Brick (Mock-Up) Texture: Smooth	#117 Red	TAYLOR CLAY PRODUCTS
TYPE 3	Brick (Mock-Up) Texture: Wirecut	#1117P Orange	TAYLOR CLAY PRODUCTS
TYPE 4	Cast Stone Waterfall	WT275	ROCKCAST or approved Equal
TYPE 5	Cast Stone Waterfall	WT290	ROCKCAST or approved Equal
TYPE 6	Cast Stone Waterfall	SL375	ROCKCAST or approved Equal
TYPE 7	Cast Stone Header	BA100	ROCKCAST or approved Equal

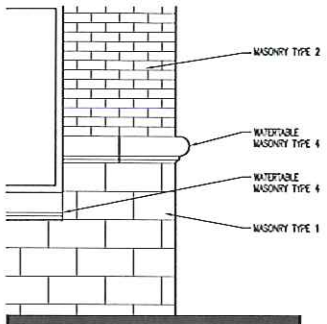
NOTE: Brick masonry pattern is a common running bond UNL0.
Provide block of water-resistant integral construction.

PAINT & DECORATIVE ITEMS			
ITEM	PRODUCT	NO./COLOR	MANUFACTURER
Coping Cap	Pre-Finished	Milch Panel	FAC-CLAD or approved Equal
PNT-1	Paint		SHERWIN WILLIAMS
PNT-2	Paint		SHERWIN WILLIAMS
EPS-1	Exterior Insulation and Finishing System	Reflect-#25 Tin Man	DRYVEX INSULATION II or approved Equal
PANEL-1	Bertrige HR-15 Wall Panel	Zinc-Coat	BERTRIDGE MANUFACTURING COMPANY

ATTACHED TO ADMINISTRATIVE APPROVAL

DATED: 8-17-2012 \$F

BY: DEBRA D. CAMPBELL

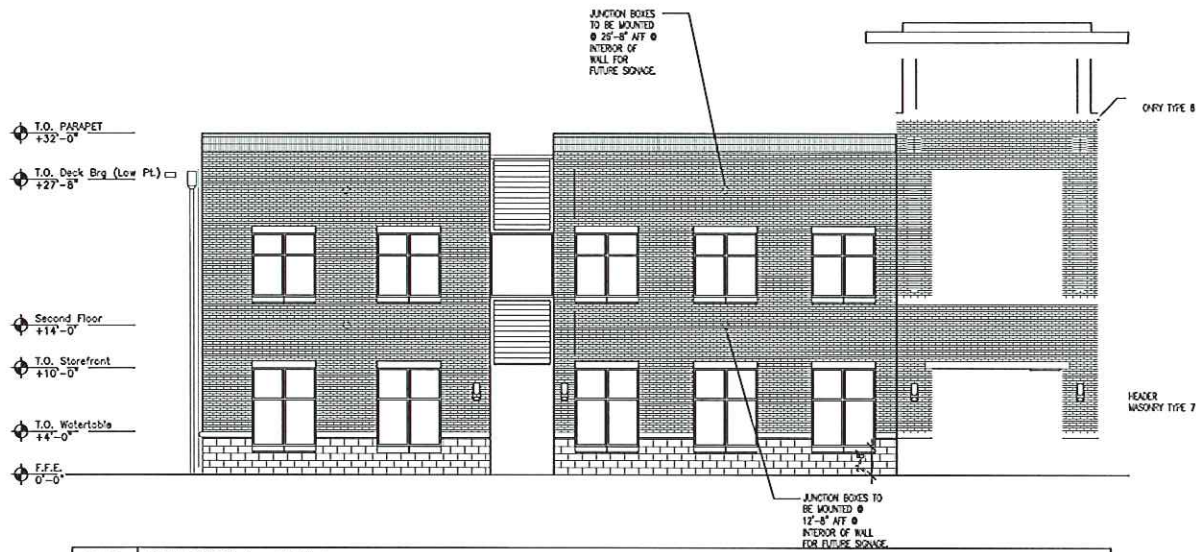
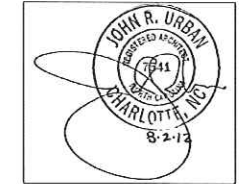


05 MOCK-UP PANEL A
1/2" = 1'-0"

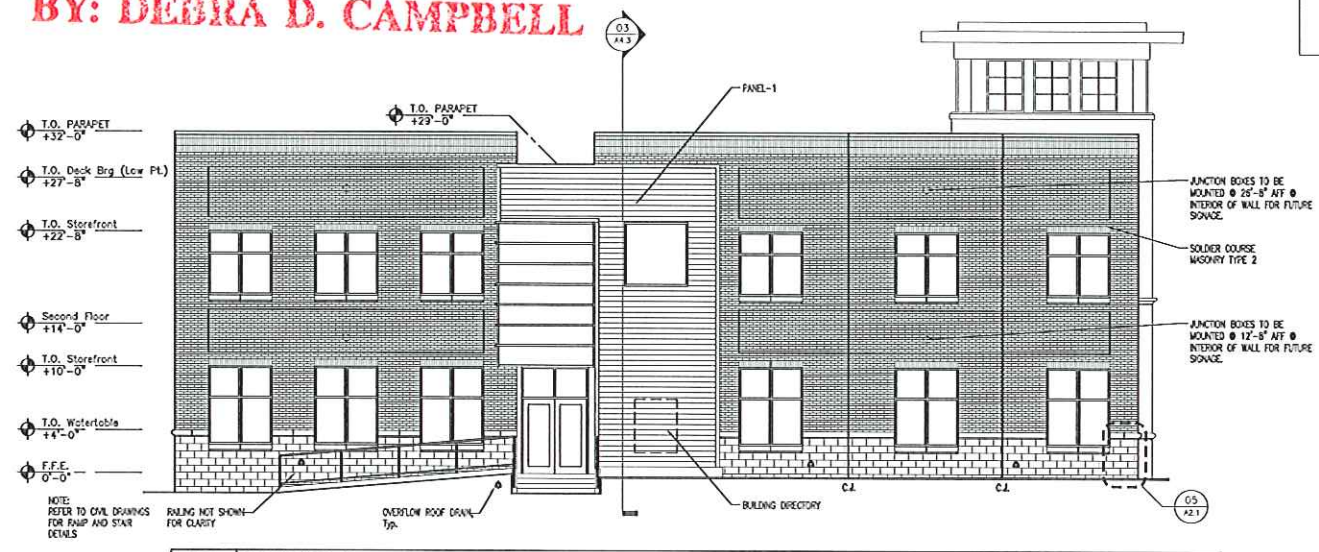
URBAN
ARCHITECTURAL GROUP

704.841.1699 fax 1242 Main Drive Suite 203
841.8440 fax Matthews, North Carolina 28105
www.UrbanAIA.com

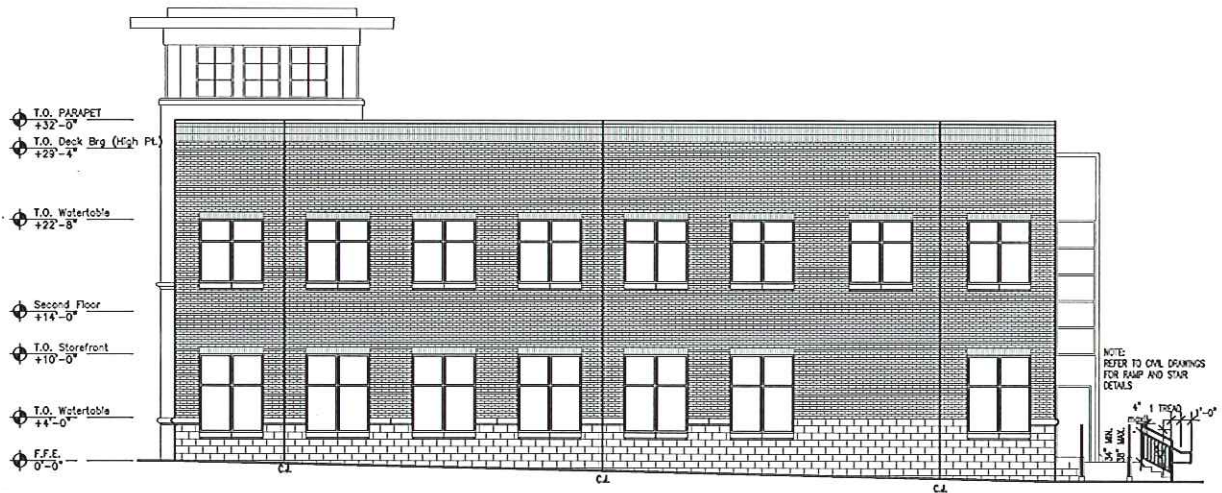
Seals:



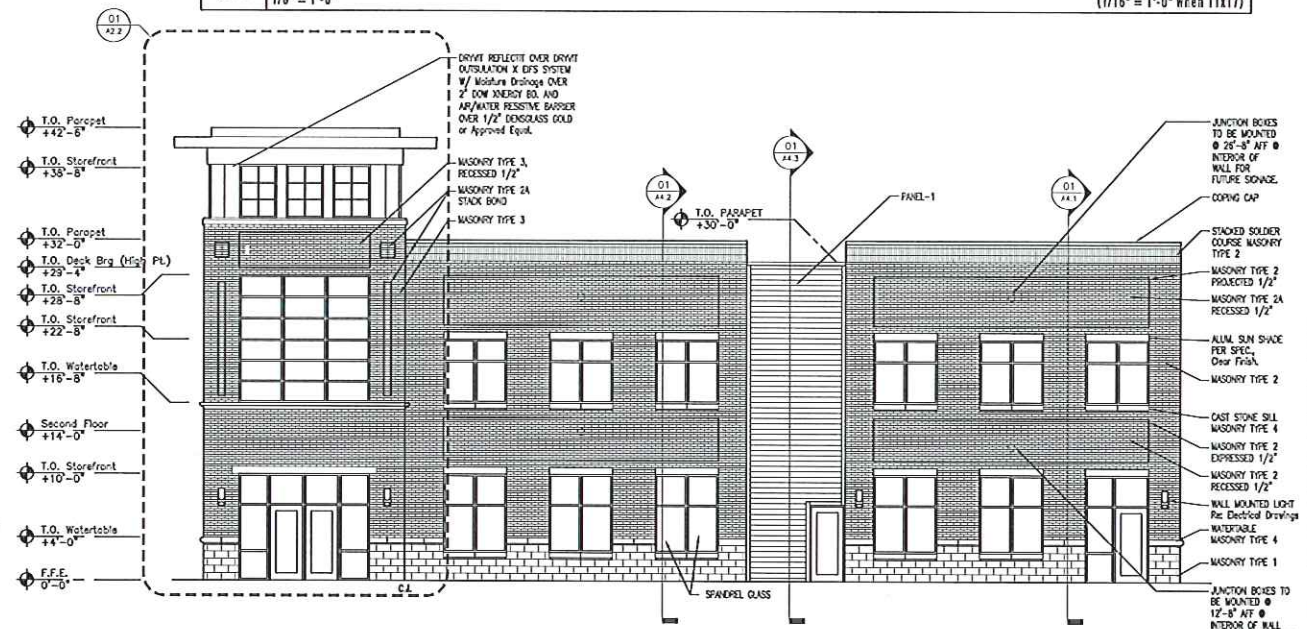
04 ELEVATION: Left Side
1/8" = 1'-0" (1/16" = 1'-0" when 11x17)



03 ELEVATION: Rear
1/8" = 1'-0" (1/16" = 1'-0" when 11x17)



02 ELEVATION: Right Side
1/8" = 1'-0" (1/16" = 1'-0" when 11x17)



01 ELEVATION: Front
1/8" = 1'-0" (1/16" = 1'-0" when 11x17)

TORINGTON MEDICAL OFFICE BUILDING Shell

12312 Copper Way
Charlotte, NC

Date: June 6, 2012
Project Number: 2012-29
Issued For:
Construction Only: 08.02.12

EXTERIOR ELEVATIONS

A2.1

© 2012 URBAN ARCHITECTURAL GROUP P.A.
All Rights Reserved. Unauthorized Reproduction Prohibited.