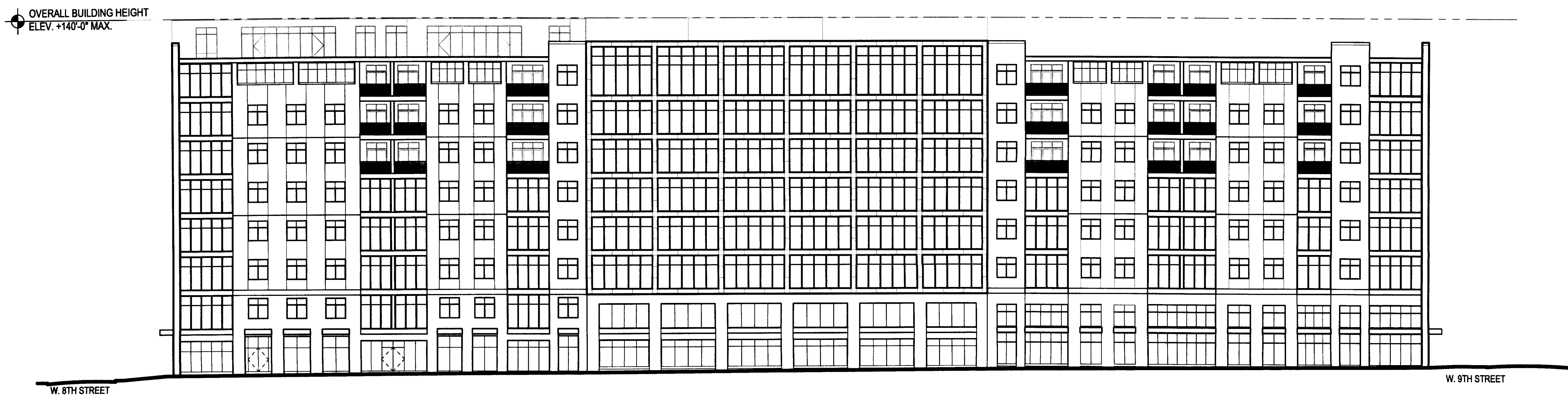
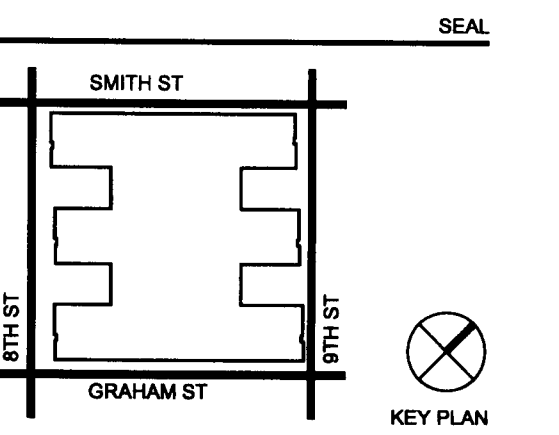


1. THIS DRAWING IS THE PROPERTY OF PERKINS EASTMAN AND IS NOT TO BE REPRODUCED OR COPIED IN PART OR IN WHOLE. IT IS NOT TO BE USED IN ANY OTHER PROJECT AND IS TO BE RETURNED ON REQUEST.
2. MATERIALS, DIMENSIONS, AND ALL OTHER CONDITIONS WHICH ARE NOT OTHERWISE DEFINED ON THIS DRAWING SHALL BE CONSIDERED AS HAVING THE SAME MEANING AS SIMILARLY INDICATED CONDITIONS WHICH ARE MORE FULLY DEFINED ELSEWHERE ON THIS PROJECT OR OTHER DRAWINGS FOR THIS PROJECT.
3. DO NOT SCALE DRAWINGS.

NO.	DATE	REVISION



**1 SOUTH EAST ELEVATION (NORTH GRAHAM STREET)**  
SCALE: 1/8" = 1'-0"



**Perkins Eastman**  
333 NORTH GRAHAM STREET  
SUITE 100  
CHARLOTTE, NC 28202  
P. 704.342.4000  
F. 704.342.4002

OWNER:  
**FOURTH WARD SQUARE ASSOCIATES**  
821 NORTH GRAHAM STREET  
CHARLOTTE, NC 28202  
704.271.3656

DEVELOPER:  
**JLT PARTNERS**  
821 NORTH GRAHAM STREET  
CHARLOTTE, NC 28202  
704.271.3656

CIVIL LANDSCAPE:  
**DESIGN REBOND GROUP**  
1250 WEST MOREHEAD STREET, SUITE 214  
CHARLOTTE, NC 28208  
704.343.0608

PROJECT TITLE:



N. GRAHAM STREET  
CHARLOTTE, NC  
PROJECT No: 27382.00

DRAWING TITLE:  
**EXTERIOR ELEVATIONS**

SCALE: 1/8" = 1'

**A200**

FOR PUBLIC HEARING  
PETITION #2007-111  
SEPTEMBER 17, 2007

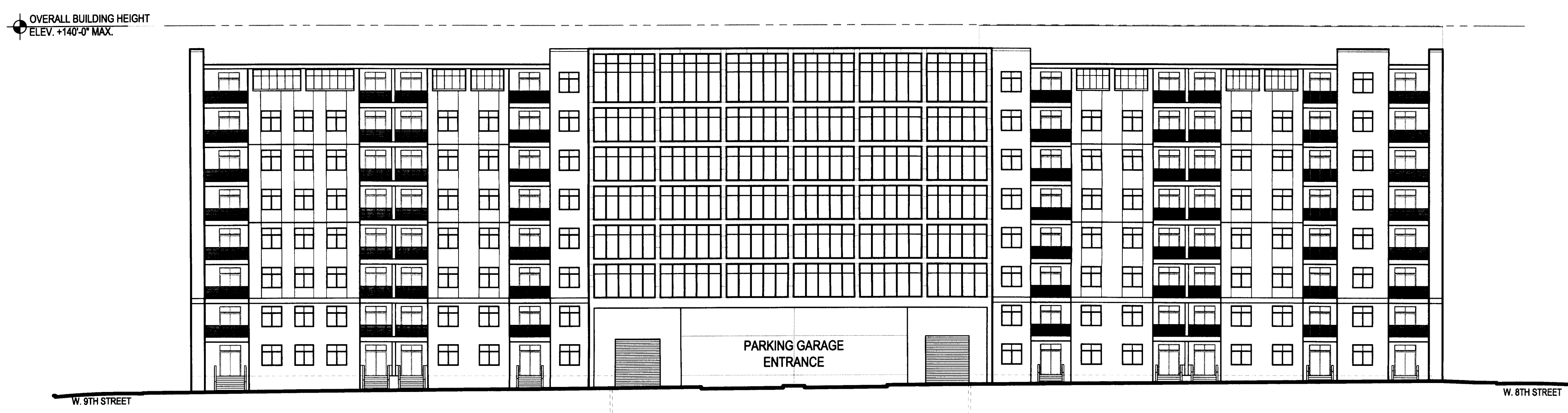


**2 SOUTH WEST ELEVATION (WEST 8TH STREET)**  
SCALE: 1/8" = 1'-0"

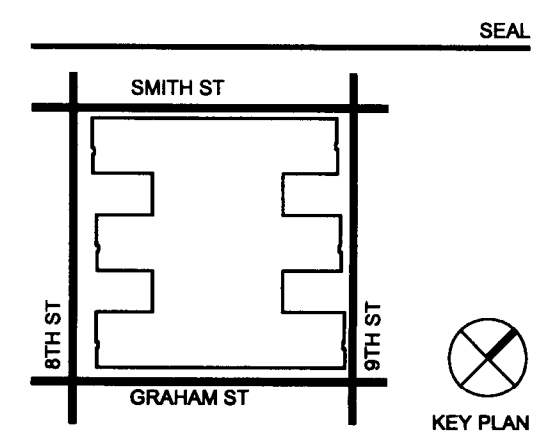
ELEVATIONS ARE SCHEMATIC IN NATURE TO CONVEY SCALE AND MASSING.  
ALL MATERIALS AND BUILDING ELEMENTS SHALL BE DEFINED AND IDENTIFIED DURING THE HISTORIC DISTRICT AND MUDD REVIEW.

1. THIS DRAWING IS THE PROPERTY OF PERKINS EASTMAN AND IS NOT TO BE REPRODUCED OR COPIED IN PART OR IN WHOLE. IT IS NOT TO BE USED IN ANY OTHER PROJECT AND IS TO BE RETURNED ON REQUEST.
2. MATERIALS, DIMENSIONS, AND ALL OTHER CONDITIONS WHICH ARE NOT OTHERWISE DEFINED ON THIS DRAWING SHALL BE CONSIDERED AS HAVING THE SAME MEANING AS SIMILARLY INDICATED CONDITIONS WHICH ARE MORE FULLY DEFINED ELSEWHERE ON THIS PROJECT OR OTHER DRAWINGS FOR THIS PROJECT.
3. DO NOT SCALE DRAWINGS.

NO.	DATE	REVISION



**1 NORTH WEST ELEVATION (NORTH SMITH STREET)**  
SCALE: 1/8" = 1'-0"



**Perkins Eastman**  
333 NORTH GRAHAM STREET  
SUITE 100  
CHARLOTTE, NC 28202  
P. 704.342.4000  
F. 704.342.4002

OWNER:  
**FOURTH WARD SQUARE ASSOCIATES**  
821 NORTH GRAHAM STREET  
CHARLOTTE, NC 28202  
704.271.3656

DEVELOPER:  
**JLT PARTNERS**  
821 NORTH GRAHAM STREET  
CHARLOTTE, NC 28202  
704.271.3656

CIVIL LANDSCAPE:  
**DESIGN REBOND GROUP**  
1250 WEST MOREHEAD STREET, SUITE 214  
CHARLOTTE, NC 28208  
704.343.0608

PROJECT TITLE:



N. GRAHAM STREET  
CHARLOTTE, NC  
PROJECT No: 27382.00

DRAWING TITLE:  
**EXTERIOR ELEVATIONS**

SCALE: 1/8" = 1'

**A201**

FOR PUBLIC HEARING  
PETITION #2007-111  
SEPTEMBER 17, 2007



**2 NORTH EAST ELEVATION (WEST 9TH STREET)**  
SCALE: 1/8" = 1'-0"

ELEVATIONS ARE SCHEMATIC IN NATURE TO CONVEY SCALE AND MASSING.  
ALL MATERIALS AND BUILDING ELEMENTS SHALL BE DEFINED AND IDENTIFIED DURING THE HISTORIC DISTRICT AND MUDD REVIEW.