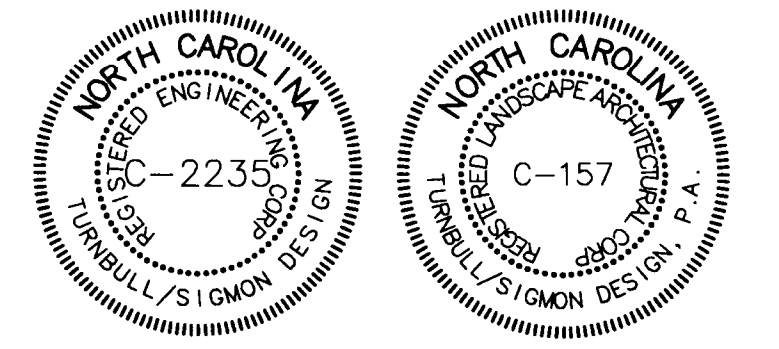


Turnbull Sigmon Design
1001 Morehead Square Dr.
Suite 530
Charlotte, NC 28203
Phone: 704-529-8500
Fax: 704-522-0882

LAND DEVELOPMENT DESIGN SERVICES



THE DRAWINGS AND THE DESIGN SHOWN THEREON ARE INSTRUMENTS OF TURNBULL SIGMON DESIGN, P.A. THE REPRODUCTION OR UNAUTHORIZED USE OF THE DOCUMENTS WITHOUT THE CONSENT OF TURNBULL SIGMON DESIGN, P.A. IS PROHIBITED. 2007 ©

Charter Properties Inc

1520 SOUTH BLVD.
CHARLOTTE, NC 28203
704-377-4172

Prosperity Village

For Public Hearing
Petition Number 07-112

CITY OF CHARLOTTE

Schematic Site Plan

PROJECT NUMBER: 07-022

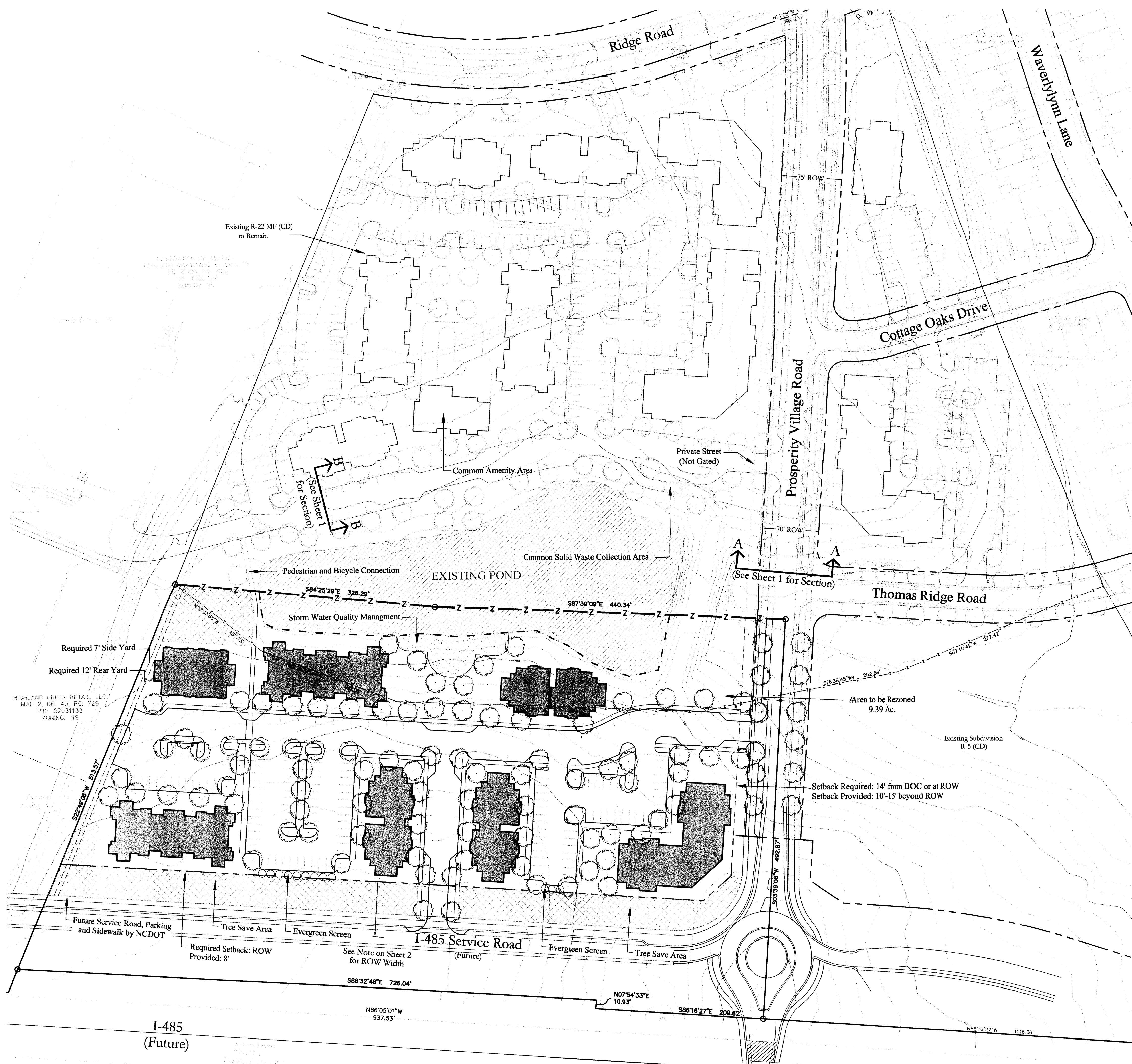
DRAWN BY: SSS/JKG

DESIGNED BY: BCS

ISSUE DATE: 06/19/07

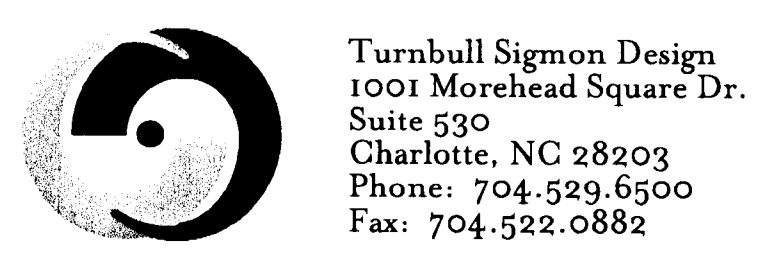
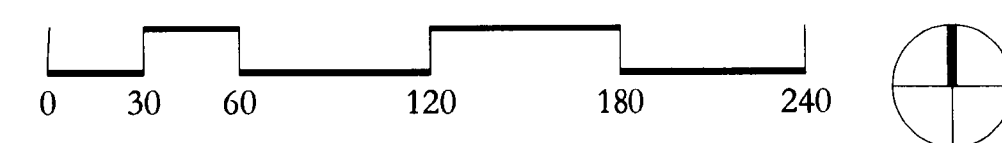
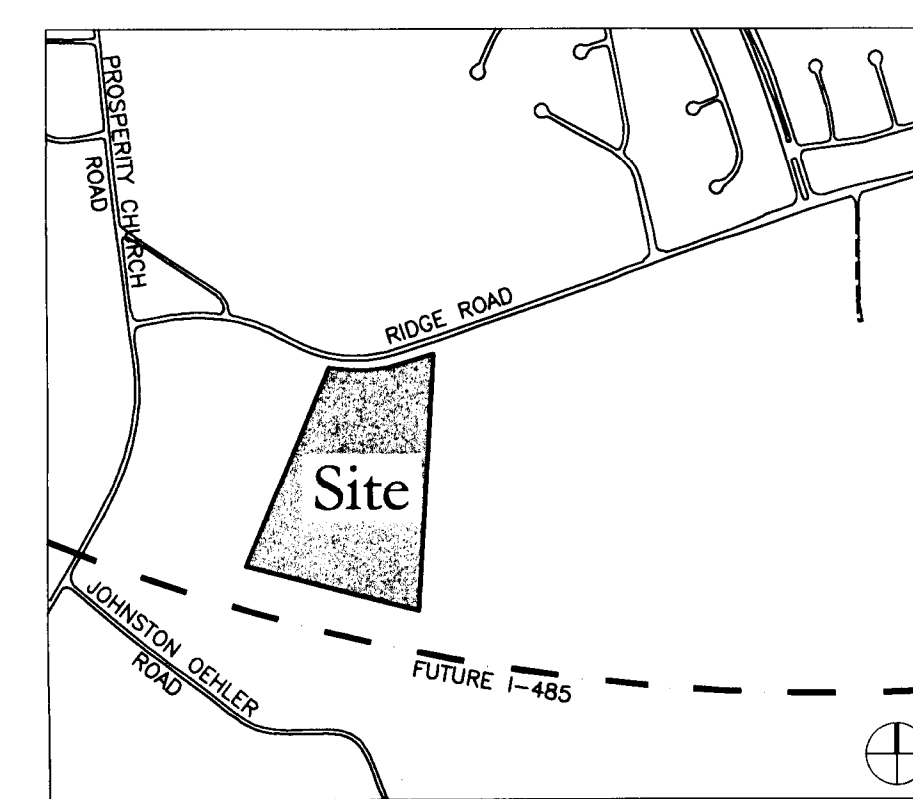
1	08-24-07	Per Comments
2	09-13-07	Per Comments
3	09-21-07	Per CDOT Comments
4	10-05-07	Per Planning Comments

NO. DATE: BY: REVISIONS:



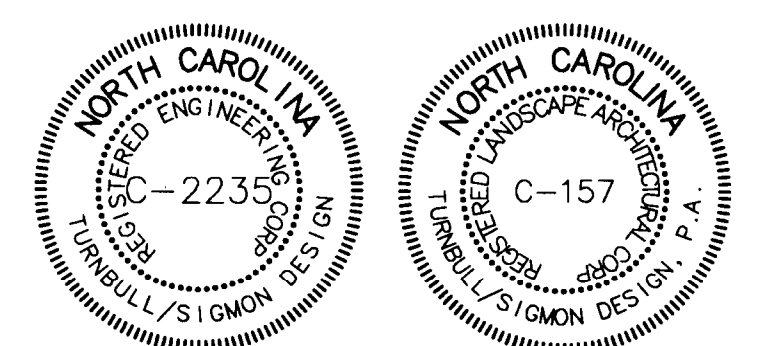
Vicinity Map:

(NTS)



Turnbull Sigmon Design
1001 Morehead Square Dr.
Suite 530
Charlotte, NC 28203
Phone: 704-529-8500
Fax: 704-522-0882

LAND DEVELOPMENT DESIGN SERVICES



THE DRAWINGS AND THE DESIGN SHOWN THEREON ARE INSTRUMENTS OF TURNBULL SIGMON DESIGN, P.A. THE REPRODUCTION OR UNAUTHORIZED USE OF THE DOCUMENTS WITHOUT THE CONSENT OF TURNBULL SIGMON DESIGN, P.A. IS PROHIBITED. 2007 ©

Charter Properties Inc

1520 SOUTH BLVD.
CHARLOTTE, NC 28203
704-377-4172

Prosperity Village

For Public Hearing
Petition Number 07-112

CITY OF CHARLOTTE

Storm Water Management Plan

PROJECT NUMBER: 07-022

DRAWN BY: JKG

DESIGNED BY: BCM

ISSUE DATE: 10/04/07

NO. DATE: BY: REVISIONS:

Storm Water Management Requirements

1. Fringe area will not require storm water detention or treatment.
2. Treatment drainage area shall be captured in storm drainage system and released into an pretreatment device. Basin shall be designed per NCDENR Storm Water Best Management Practices Manual. Basin should treat first 1" of rainfall and control the 1-year, 24-hour storm volume to be released over a period of 2 - 5 days.
3. Existing pond may be used for quantity and/or quality controls.

Storm Water Notes

The following agencies must be contacted prior to construction regarding wetland and water quality permits:
Section 401 Permit NCDEHNR - Raleigh Office (919) 733-1786
Section 404 Permit US Army Corps of Engineers (704) 271-4854
The developer may, through an agreement with necessary property owners and/or agencies and entities, utilize and improve the existing pond on the proposed development site for detention and water quality benefits. If the existing pond is to be utilized, the petitioner shall improve/enhance the pond to meet the aforementioned specifications listed above. Improvements and enhancements may include construction of a forebay at the site's storm water discharge, construction of a littoral shelf around the perimeter of the pond, and construction of an outlet control structure to meet all detention requirements as well as drawdown requirements.

Water Quality Summary

Proposed Treatment Area (Total) =	5.33 acres
Proposed Treatment Area Impervious % =	65%
Proposed Impervious Area Treated =	3.46 acres

Vicinity Map:

(NTS)

