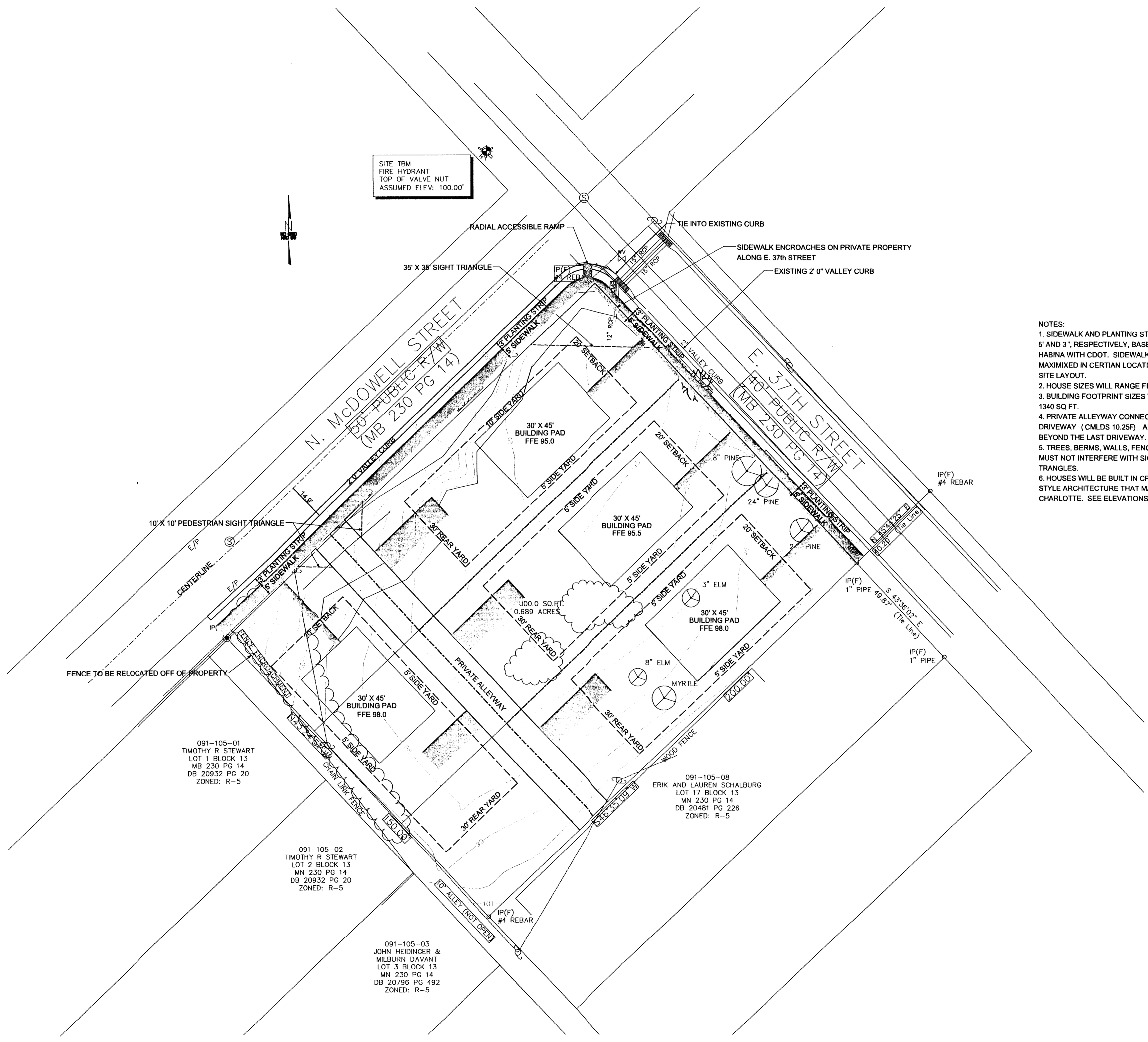


VICINITY MAP
N.T.S.

| BUNGALOWS ON McDOWELL STREET | |
|--|-------------------------------------|
| SITE PLAN | |
| DEVELOPER | CIVIL ENGINEER |
| BUNGALOW DESIGNS, INC. 1323 IVEY DRIVE CHARLOTTE, NC 28205 704-995-5031 | AARON S. EARLEY, PE 704-819-0848 |
| DATE: OCTOBER 15, 2007 | |

2007-120

SITE TBM
FIRE HYDRANT
TOP OF VALVE NUT
ASSUMED ELEV: 100.00'



- NOTES:
1. SIDEWALK AND PLANTING STRIP WIDTHS WILL BE A MINIMUM OF 5' AND 3', RESPECTIVELY, BASED ON COMMENTS FROM SUSAN HABINA WITH CDOT. SIDEWALK AND PLANTING STRIP WIDTHS WILL MAXIMIZED IN CERTAIN LOCATIONS BASED ON TOPOGRAPHY AND SITE LAYOUT.
 2. HOUSE SIZES WILL RANGE FROM 1600SQ FT TO 2100 SQ FT.
 3. BUILDING FOOTPRINT SIZES WILL RANGE FROM 1000 SQ FT TO 1340 SQ FT.
 4. PRIVATE ALLEYWAY CONNECTION WILL BE A TYPE II MODIFIED DRIVEWAY (CMLDS 10.25F) AND SHOULD TERMINATE 15' TO 20' BEYOND THE LAST DRIVEWAY.
 5. TREES, BERMS, WALLS, FENCES, SIGNS AND OTHER OBSTRUCTIONS MUST NOT INTERFERE WITH SIGHT DISTANCES AT THE SIGHT TRIANGLES.
 6. HOUSES WILL BE BUILT IN CRAFTSMEN OR TRADITIONAL BUNGALOW STYLE ARCHITECTURE THAT MAINTAIN THE INTEGRITY OF HISTORIC CHARLOTTE. SEE ELEVATIONS PLAN SHEET FOR RENDERINGS.

SITE DATA TABLE

| |
|---|
| PIN: 09110509 |
| EXISTING ZONING: R-5 |
| PROPOSED ZONING: R-6 |
| PROPOSED USE: SINGLE FAMILY RESIDENTIAL |
| ACREAGE: 0.689 ACRES |
| NO. OF PARKING SPACES REQUIRED: 0 |
| NO. OF PARKING SPACES PROVIDED: 0 |

LEGEND

| | |
|--|---------------------------------|
| | EXISTING SANITARY SEWER MANHOLE |
| | EXISTING FIRE HYDRANT |
| | EXISTING WATER VALVE |
| | EXISTING CATCH BASIN |
| | EXISTING TREE |
| | EXISTING POWER POLE |

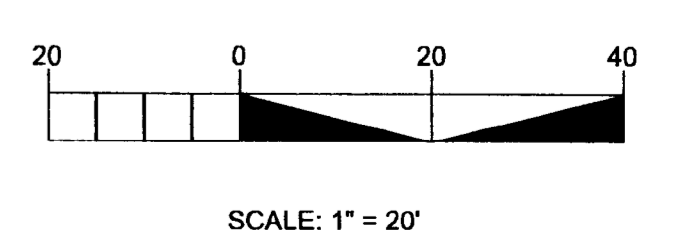
091-105-01
TIMOTHY R STEWART
LOT 1 BLOCK 13
MB 230 PG 14
DB 20932 PG 20
ZONED: R-5

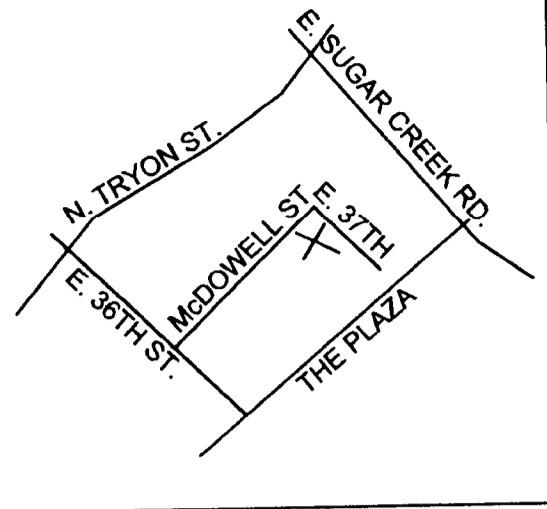
091-105-02
TIMOTHY R STEWART
LOT 2 BLOCK 13
MN 230 PG 14
DB 20932 PG 20
ZONED: R-5

091-105-03
JOHN HEIDINGER &
MILBURN DAVANT
LOT 3 BLOCK 13
MN 230 PG 14
DB 20796 PG 492
ZONED: R-5

091-105-08
ERIK AND LAUREN SCHALBURG
LOT 17 BLOCK 13
MN 230 PG 14
DB 20481 PG 226
ZONED: R-5

APPROVED BY
CITY COUNCIL
NOV 19 2007





VICINITY MAP
N.T.S.

Rick Thompson Architect
www.thompsonplans.com
P.O. Box 160
Lake Junaluska, NC 28745
828-627-1479

plan # 1808A
12/7/2006

Size fl 1 1176
Size fl 2 729
Size Total 1891

Width 34'-0"
Depth 38'-0"
Porch 8'-0"

Fl 1 ceiling 9'
Fl 2 ceiling 9'
Roof pitch 5/12
Height 24'-0"

Prints 5 sets Please see
Prints 8 sets web site for
Vellums current
Material list pricing
CAD thank you

Floor 1 plan Floor 2 plan

Please specify foundation type (crawl standard) Available types Crawl Slab or Basement

Rick Thompson Architect
www.thompsonplans.com
P.O. Box 160
Lake Junaluska, NC 28745
828-627-1479

plan # 1902B

Size fl 1 1004
Size fl 2 956
Size Total 1960

Width 26'-0"
Depth 44'-0"
Porch 8'

Fl 1 ceiling 9'
Fl 2 ceiling 8'
Roof pitch 10/12
Height 24'-9"

Prints 5 sets Please see
Prints 8 sets web site for
Vellums current
Material list pricing
CAD thank you

Floor 1 plan Floor 2 plan

Please specify foundation type (crawl standard) Available types - Crawl or Basement

© 2002 Rick Thompson

Rick Thompson Architect
www.thompsonplans.com
P.O. Box 160
Lake Junaluska, NC 28745
828-627-1479

plan # 1905A
10/14/1992

Size fl 1 1189
Size fl 2 722
Size Total 1901

Width 37'-0"
Depth 40'-0"
Porch 6'

Fl 1 ceiling 9'
Fl 2 ceiling 8'
Roof pitch 10/12
Height 25'

Prints 5 sets Please see
Prints 8 sets web site for
Vellums current
Material list pricing
CAD thank you

Floor 1 plan Floor 2 plan

Please specify foundation type (crawl standard) Available types Crawl Slab or Basement

Floor 1 plan Floor 2 plan

Please specify foundation type (crawl standard) Available types Crawl Slab or Basement

| BUNGALOWS ON McDOWELL STREET | |
|--|-------------------------------------|
| ELEVATIONS | |
| DEVELOPER | CIVIL ENGINEER |
| BUNGALOW DESIGNS, INC. 1323 IVEY DRIVE CHARLOTTE, NC 28205 704-995-5031 | AARON S. EARLEY, PE 704-819-0848 |
| DATE: OCTOBER 15, 2007 | |