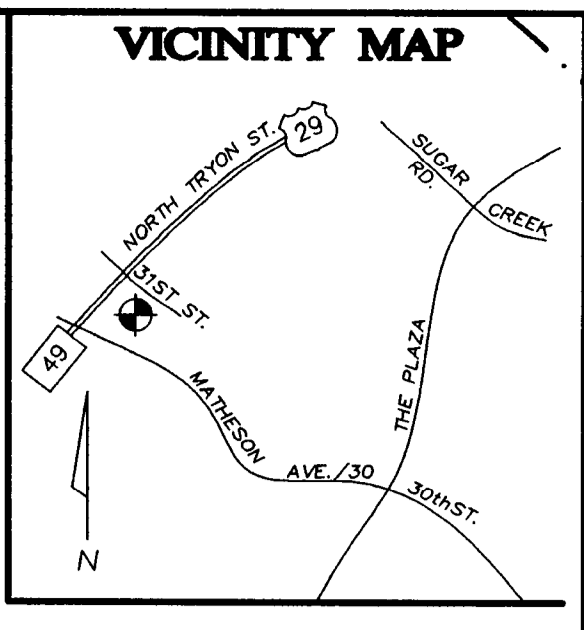


OWNER: FIRST INDUSTRIAL B & L, LLC  
 2420 Bank of America Plaza  
 Charlotte, NC 28280  
 (704) 376-9921



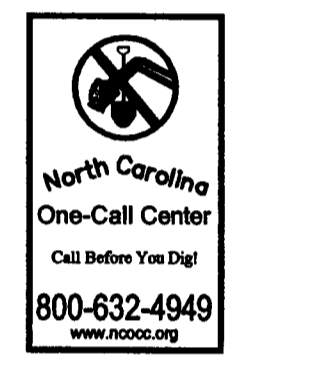
THIS DRAWING IS THE PROPERTY OF BURTON ENGINEERING ASSOCIATES AND IS NOT TO BE REPRODUCED OR COPIED IN WHOLE OR IN PART. IT IS NOT TO BE USED ON ANY OTHER PROJECT AND IS TO BE RETURNED UPON REQUEST.

**BURTON ENGINEERING ASSOCIATES**  
 CIVIL ENGINEERS  
 LAND PLANNERS  
 5909 Fairview Rd., Suite 100, Charlotte, NC 28210  
 (704) 555-8881 • Fax: (704) 555-8880

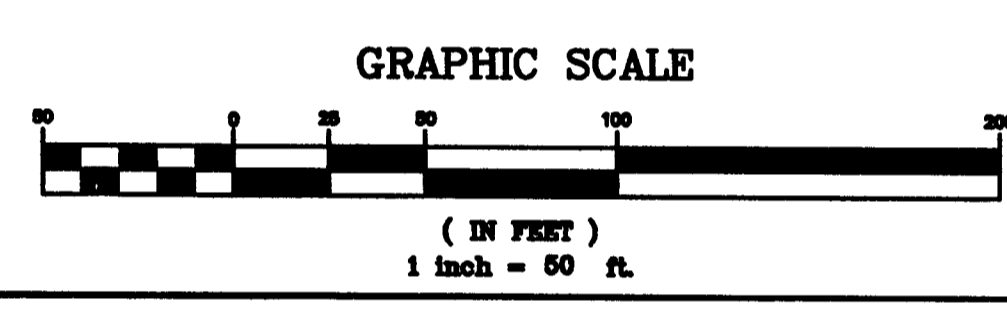
**MATHESON AVENUE/30th STREET**  
 CHICK GODLEY RD. AND DRIVEWAY ACCESS PLAN  
**ILLUSTRATIVE SITE PLAN**  
 PETITION NO. 2008-082

GREENWAY DEDICATION TO BE PART OF FINAL DEVELOPMENT PLANS. GREENWAY TO ENCOMPASS THE SWIM BUFFER PLUS 50% OF THE FEMA FLOODWAY. GREENWAY DEDICATION MAY NOT INCLUDE ANY WATER QUALITY FEATURES REQUIRED FOR THE SITE DEVELOPMENT. WORK SHALL IT ENCOMPASS ANY OPEN SPACE REQUIREMENTS TO MEET THE DEVELOPMENT STANDARDS.

**DRAWING INFORMATION**

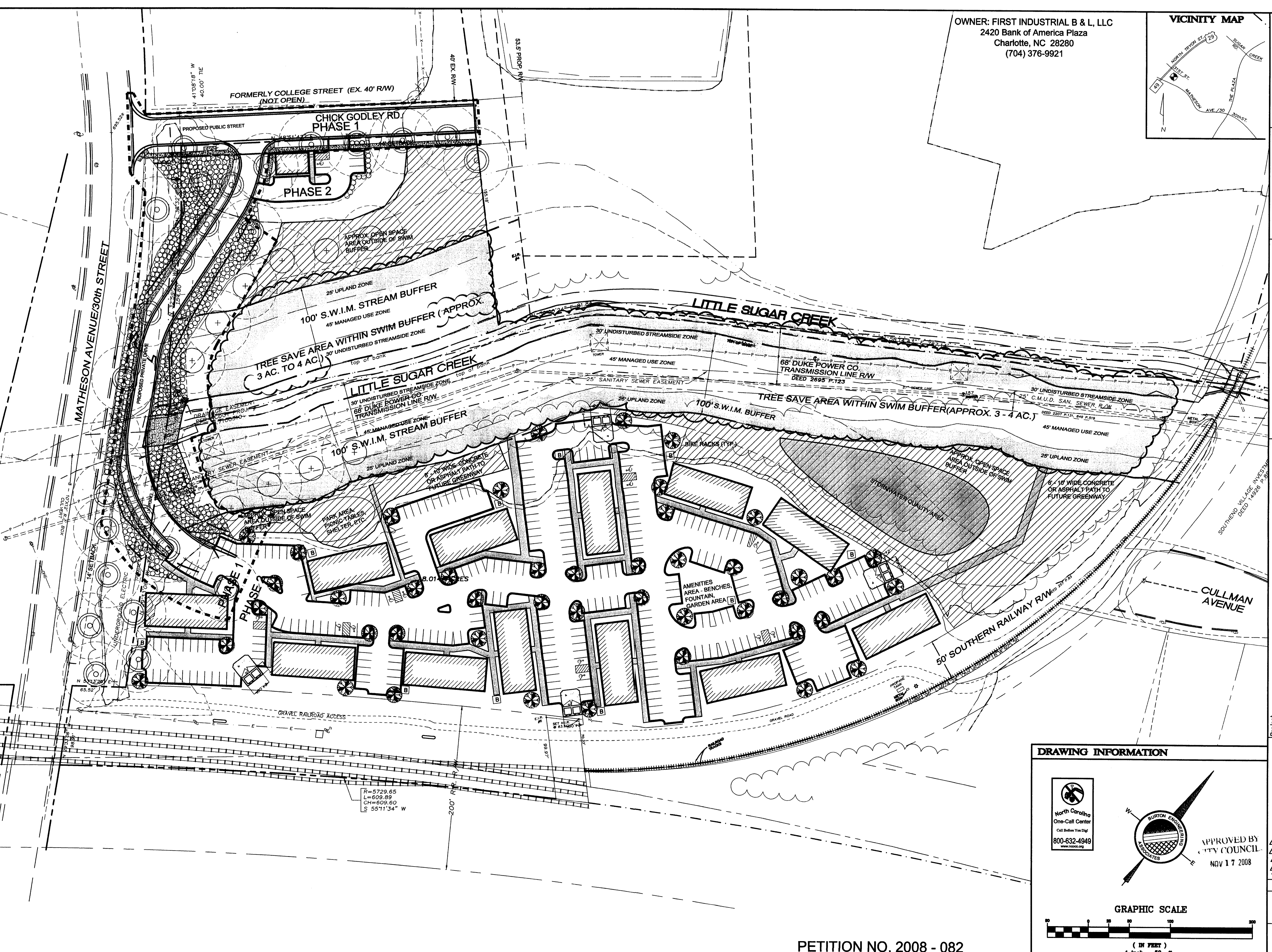


APPROVED BY  
**CITY COUNCIL**  
 NOV 17 2008

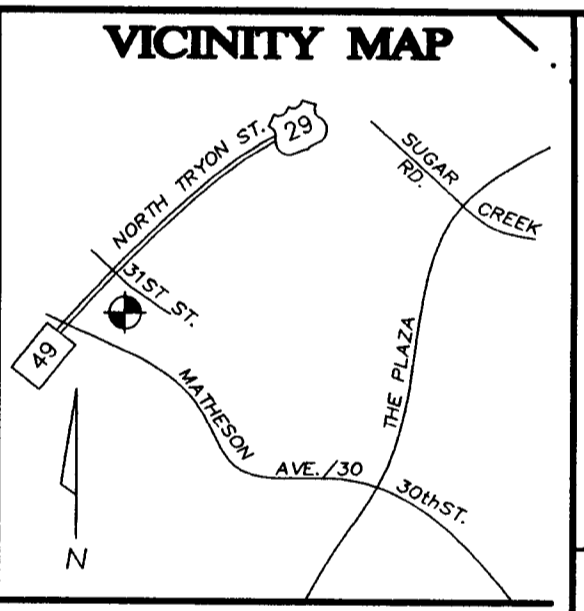


PETITION NO. 2008 - 082

Project	WGF
Engineer	WGF
Drawn By	02/26/08
Date	
Revisions	
1 - REV PER CMPC	
2 - REV PER CMPC 09-23-08	
3 - REV PER CMPC 10-22-08	
4 - ADDED AIR QUALITY NOTE 12-30-08	
Project Number	433.004
Sheet	of 4



OWNER: FIRST INDUSTRIAL B & L, LLC  
 2420 Bank of America Plaza  
 Charlotte, NC 28280  
 (704) 376-9921

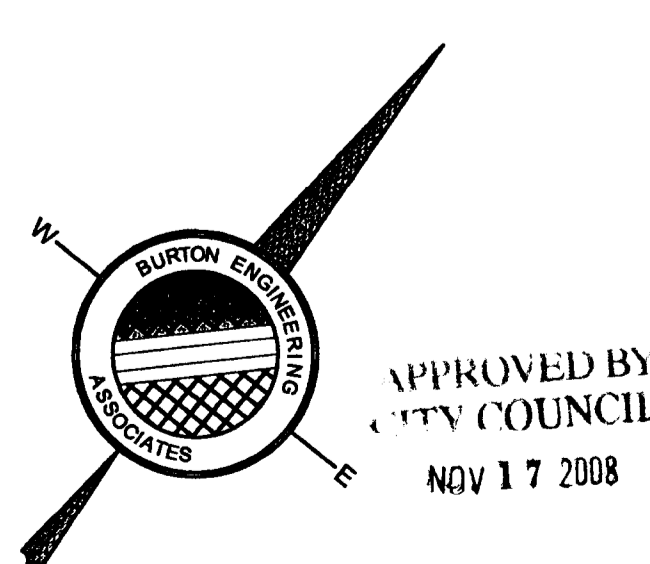


THIS DRAWING IS THE PROPERTY OF BURTON ENGINEERING ASSOCIATES AND IS NOT TO BE REPRODUCED OR COPIED IN WHOLE OR IN PART. IT IS NOT TO BE USED ON ANY OTHER PROJECT AND IS TO BE RETURNED UPON REQUEST.

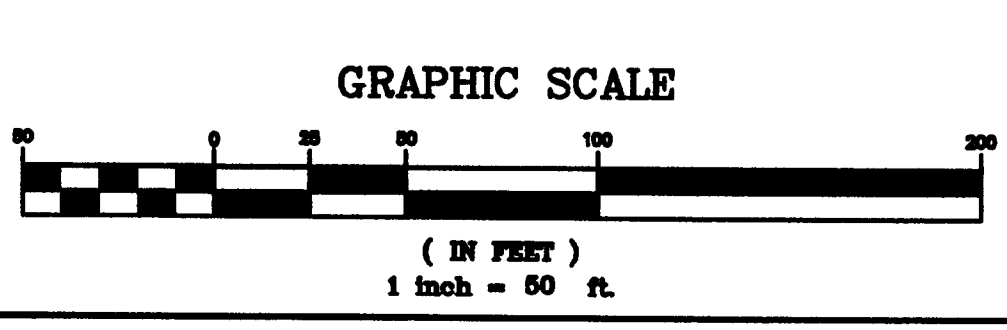
**BURTON ENGINEERING ASSOCIATES**  
 CIVIL ENGINEERS  
 LAND PLANNERS  
 5909 Fairview Rd., Suite 100, Charlotte, NC 28210  
 (704) 555-8881 • Fax: (704) 555-8880

**MATHESON AVENUE/30th STREET**  
 CHICK GODLEY RD. AND DRIVEWAY ACCESS PLAN  
**ILLUSTRATIVE LANDSCAPE PLAN**  
 PETITION NO. 2008-082

**DRAWING INFORMATION**



APPROVED BY  
**CITY COUNCIL**  
 NOV 17 2008



PETITION NO. 2008 - 082

Project	WGF
Engineer	WGF
Drawn By	02/26/08
Date	
Revisions	
1 - REV PER CMPC	
2 - REV PER CMPC 09-23-08	
3 - REV PER CMPC 10-22-08	
4 - ADDED AIR QUALITY NOTE 12-30-08	
Project Number	433.004
Sheet	of 4