

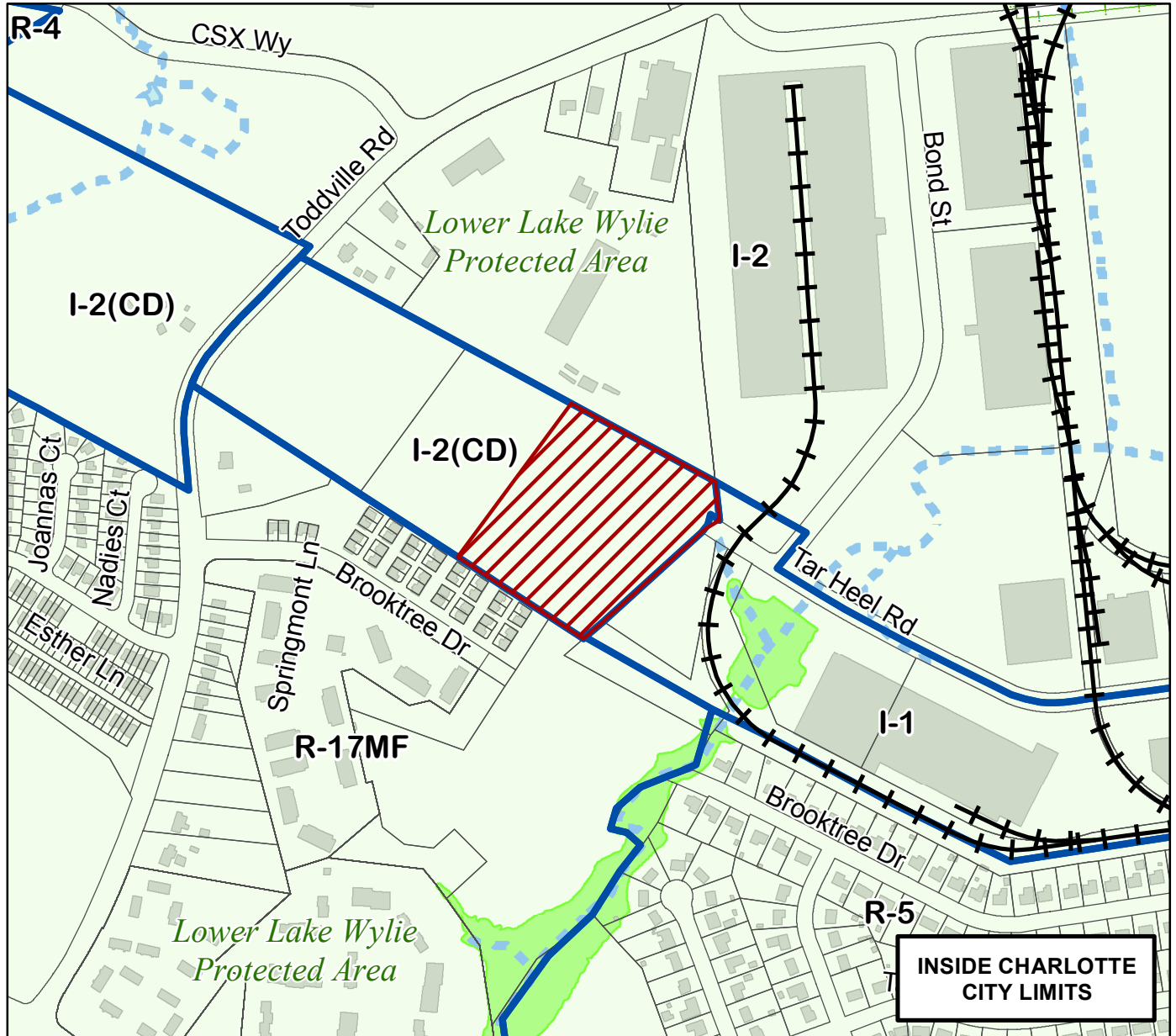
Petition #: **2017-030**

Petitioner: **DC Property, LLC**

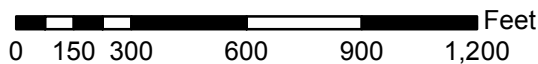
Zoning Classification (Existing): **I-2(CD)(LLWPA)**  
(General Industrial, Conditional, Lower Lake Wylie Protected Area)

Zoning Classification (Requested): **I-2(CD) SPA(LLWPA)**  
(General Industrial, Conditional, Site Plan Amendment, Lower Lake Wylie Protected Area)

Acres & Location: Approximately 7.972 acres at the end of Tar Heel Road between Brooktree Drive and Bond Street and east of Toddville Road.



Map Produced by the Charlotte-Mecklenburg Planning Department, 12-8-2016.



Zoning Map #s

**81**

