

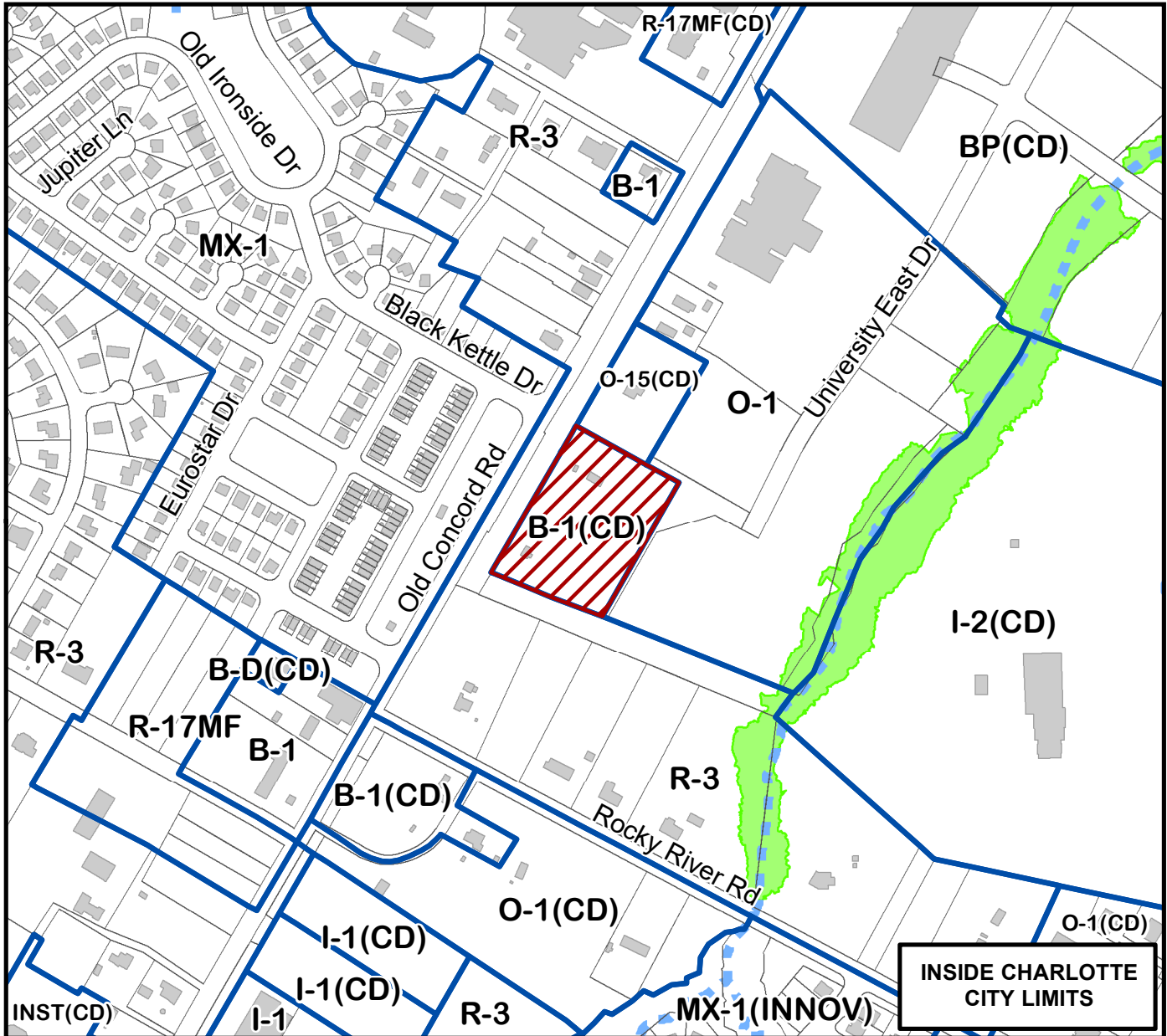
Petition #: **2017-117**

Petitioner: **Profile Homes**

Zoning Classification (Existing): **B-1(CD)**
(Neighborhood Business, Conditional)

Zoning Classification (Requested): **O-1**
(Office)

Acreage & Location: Approximately 4.27 acres located at the end of University East Drive, east of Old Concord Road, north of Rocky River Road.



Map Produced by the Charlotte-Mecklenburg Planning Department, 9-5-2017.

0 187.5 375 750 1,125 1,500 Feet



Zoning Map #(s)

72

