

2017-183 : Hopper Communities, Inc.

Current Zoning R-3 (Single Family Residential)

Requested Zoning UR-2(CD) (Urban Residential, Conditional)

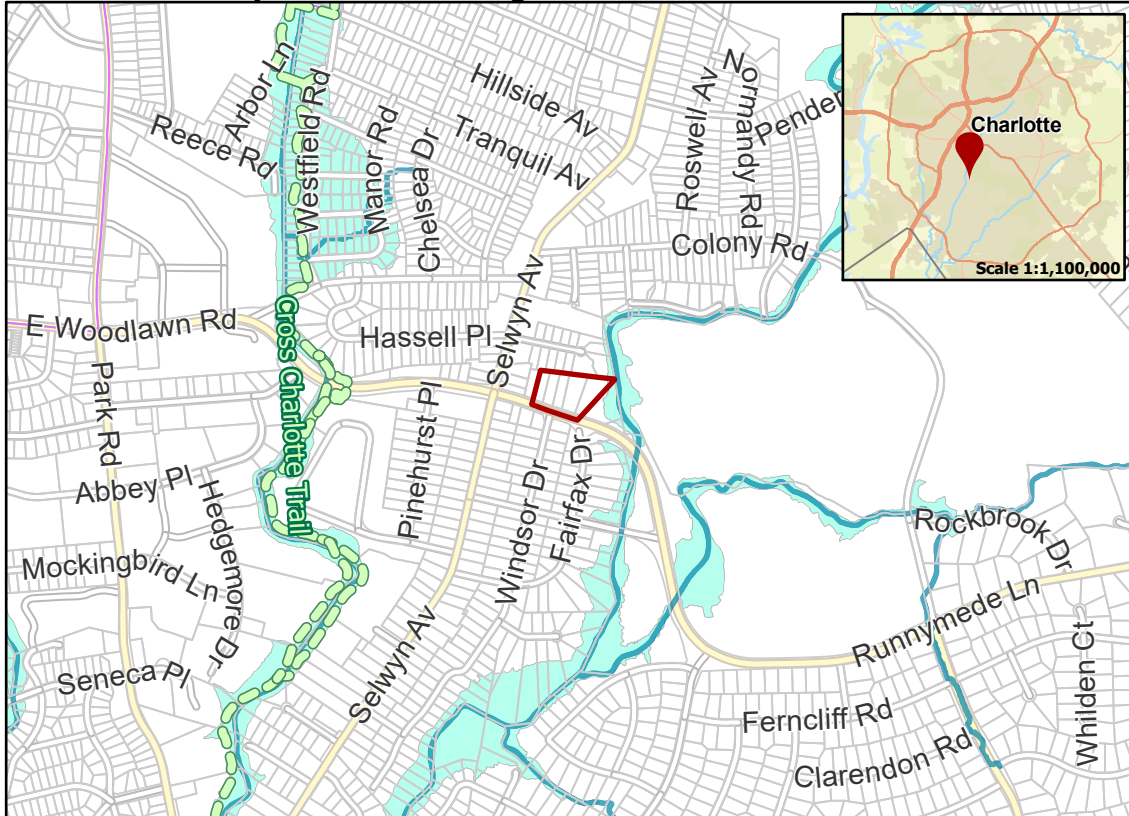
Approximately 3.01 acres

# Rezoning Map



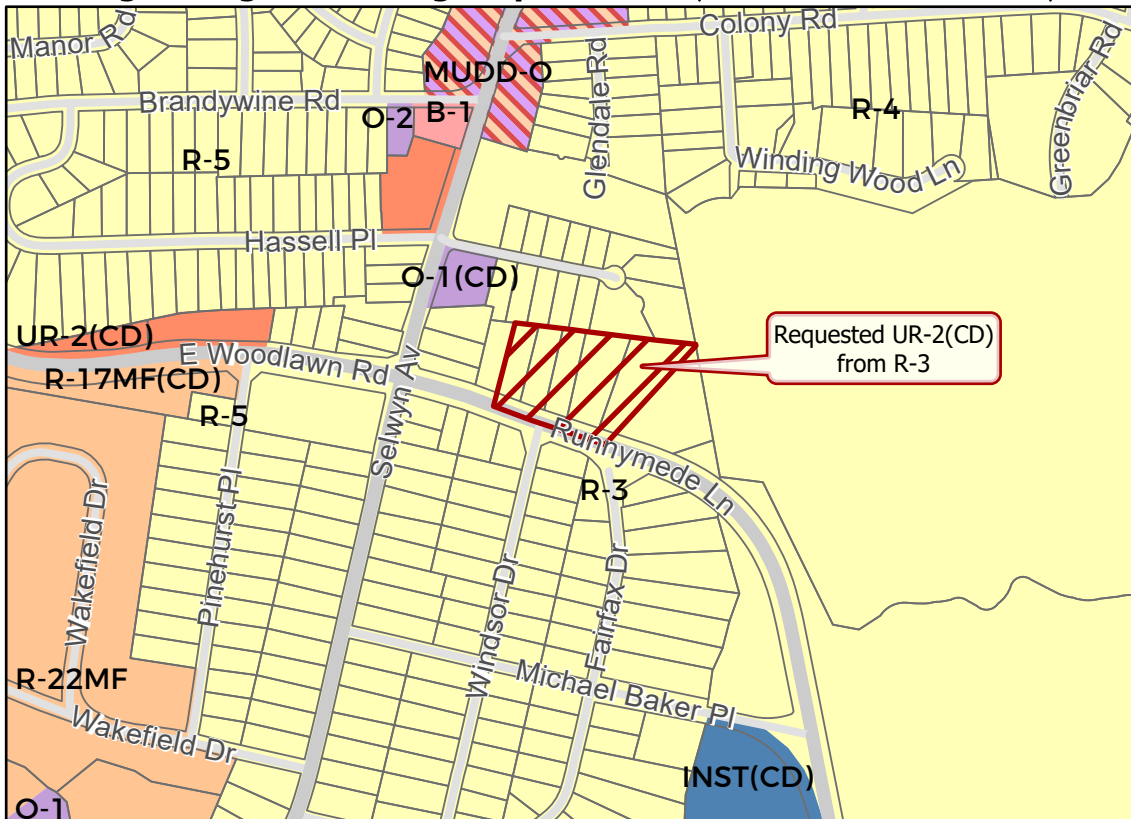
CHARLOTTE  
CHARLOTTE-MECKLENBURG  
PLANNING

## Location of Requested Rezoning



- 2017-183
- Inside City Limits
- Parcel
- Cross Charlotte Trail
- Streams
- FEMA Flood Plain
- City Council District**
- 6-Tariq Bokhari

## Existing Zoning & Rezoning Request



- Requested UR-2(CD) from R-3
- Zoning Classification**
- Single Family
- Multi-Family
- Urban Residential
- Institutional
- Office
- Business
- Mixed Use



Map Created 12/11/2017