

2017-198: WaterWalk Real Estate Services, LLC

Rezoning Map

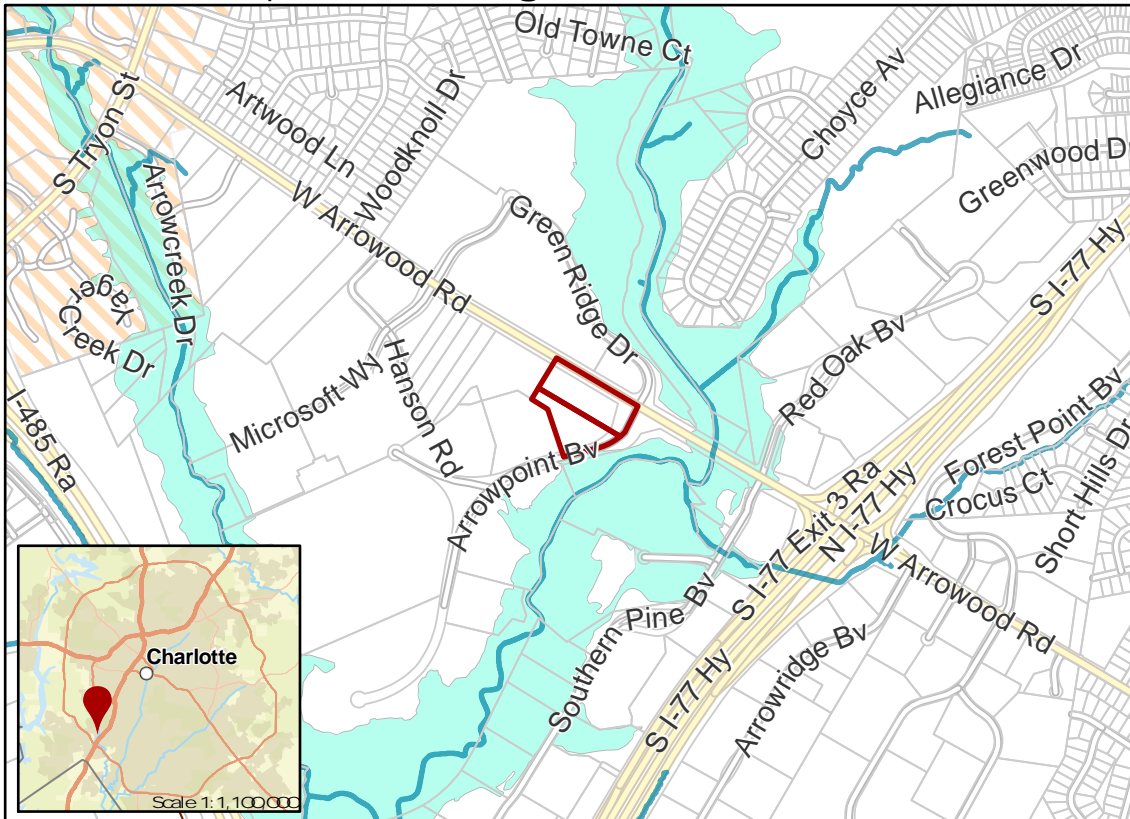
Current Zoning B-D(CD), I-1 (Distributive Business, Conditional; Light Industrial)

Requested Zoning O-2(CD) (Office, Conditional)

Approximately 5.75 acres



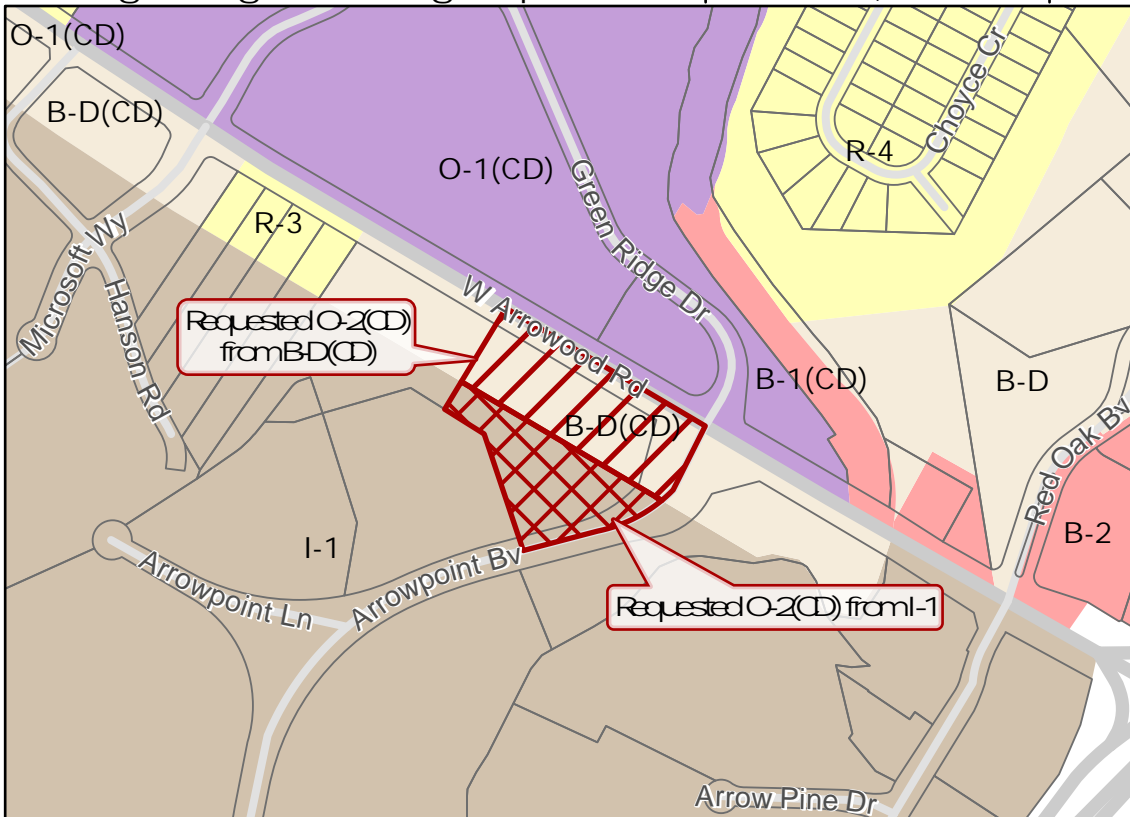
Location of Requested Rezoning



- 2017-198
- Inside City Limits
- Parcel
- Railway
- Streams
- FEMA Flood Plain
- Airport Noise Overlay
- City Council District
- 3-LaVera Mayfield

Existing Zoning & Rezoning Request

0 0.25 0.5 Miles



- Requested O-2(CD) from BD(CD)
- Requested O-2(CD) from I-1

Zoning Classification

- Single Family
- Institutional
- Office
- Business
- Business-Distribution
- Light Industrial



0 250 500 1,000 Feet

Map Created 12/28/2017