

2018-064: Chick-fil-A, Inc.

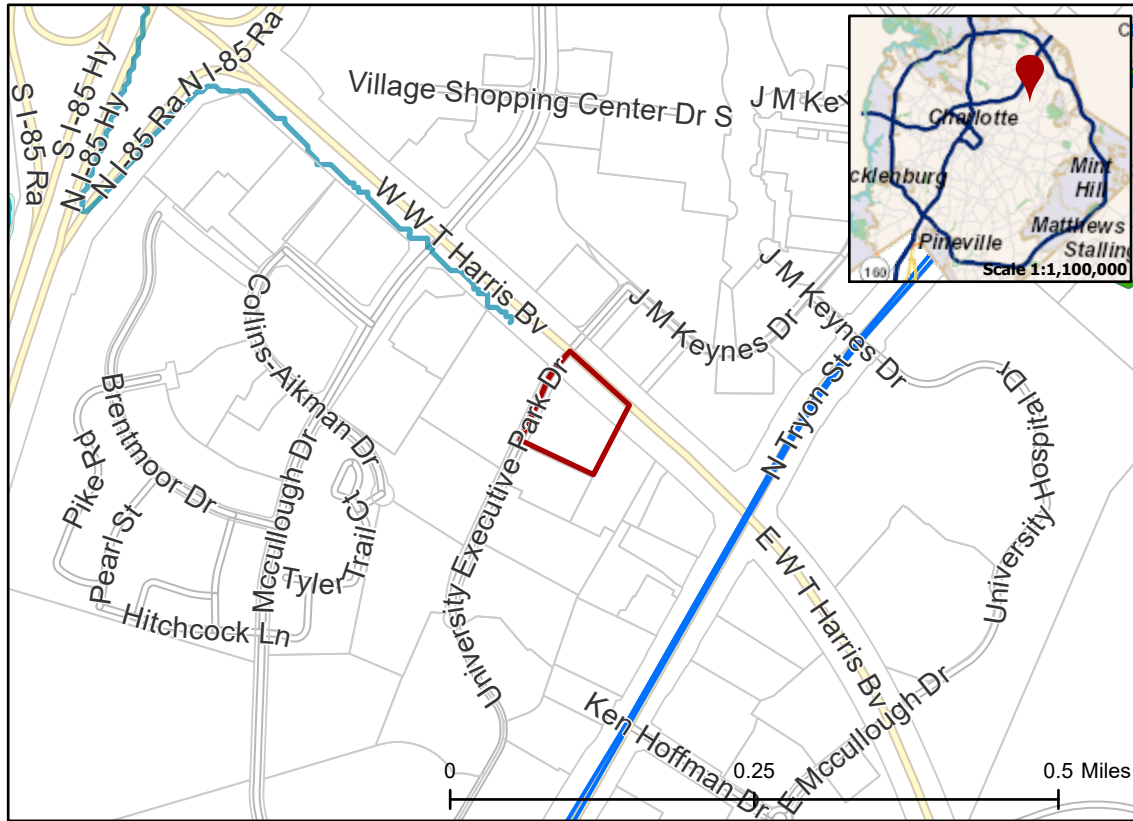
Current Zoning O-15(CD) (Office, Conditional)

Requested Zoning B-2(CD)(General Business, Conditional)

Approximately 2.03 acres

Location of Requested Rezoning

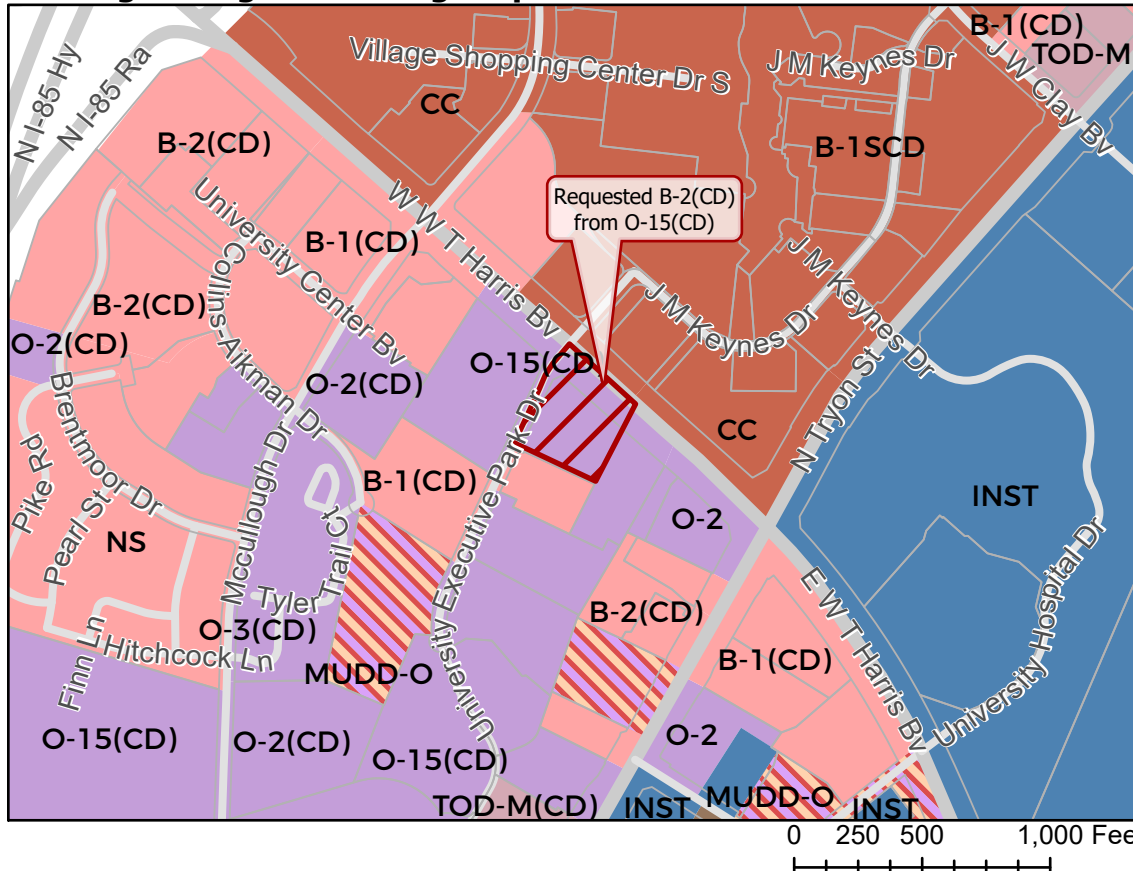
Rezoning Map



- 2018-064
- Inside City Limits
- Parcel
- LYNX Blue Line Station
- LYNX Blue Line
- Greenway
- Streams
- FEMA Flood Plain
- City Council District**
- 4-Gregory A. Phipps



Existing Zoning & Rezoning Request



- Requested B-2(CD) from O-15(CD)
- Zoning Classification**
- Institutional
- Office
- Business
- Commercial Center
- General Industrial
- Mixed Use
- Transit-Oriented



Map Created 10/18/2018

