

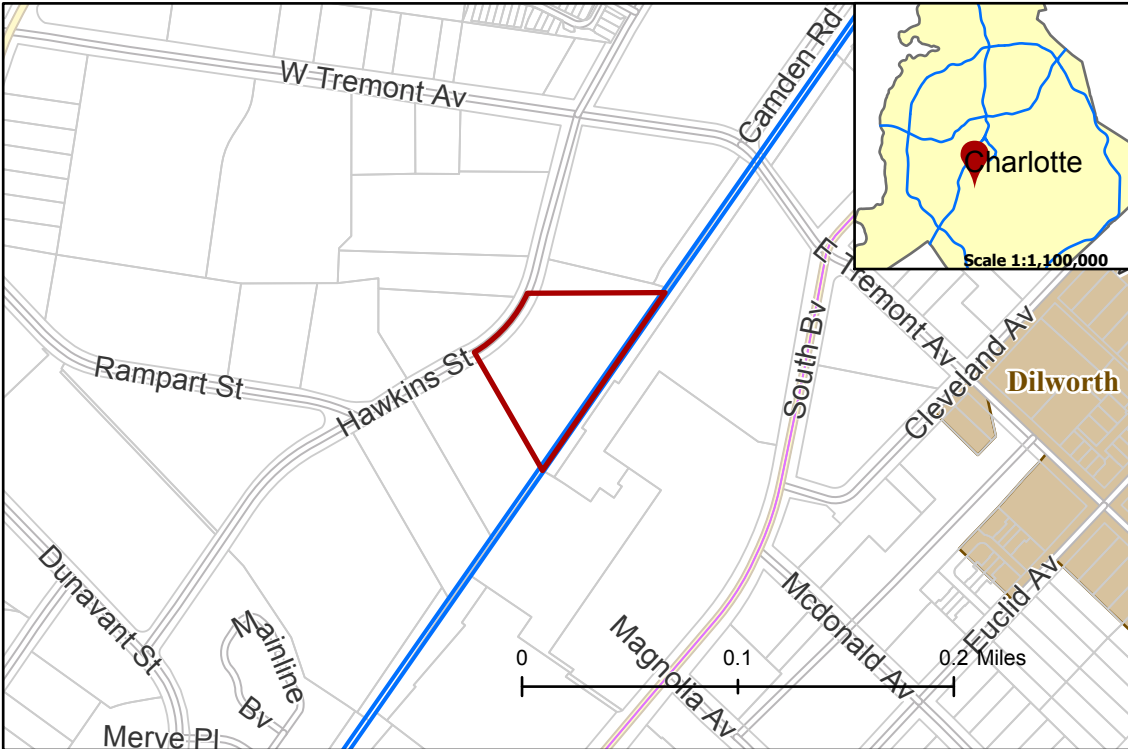
2018-144: Portman Holdings

Current Zoning MUDD-O (Mixed Use Development, Optional)

Requested Zoning TOD-M(O) (Transit Oriented Development- Mixed Use, Optional)

Approximately 2.21 acres

Location of Requested Rezoning



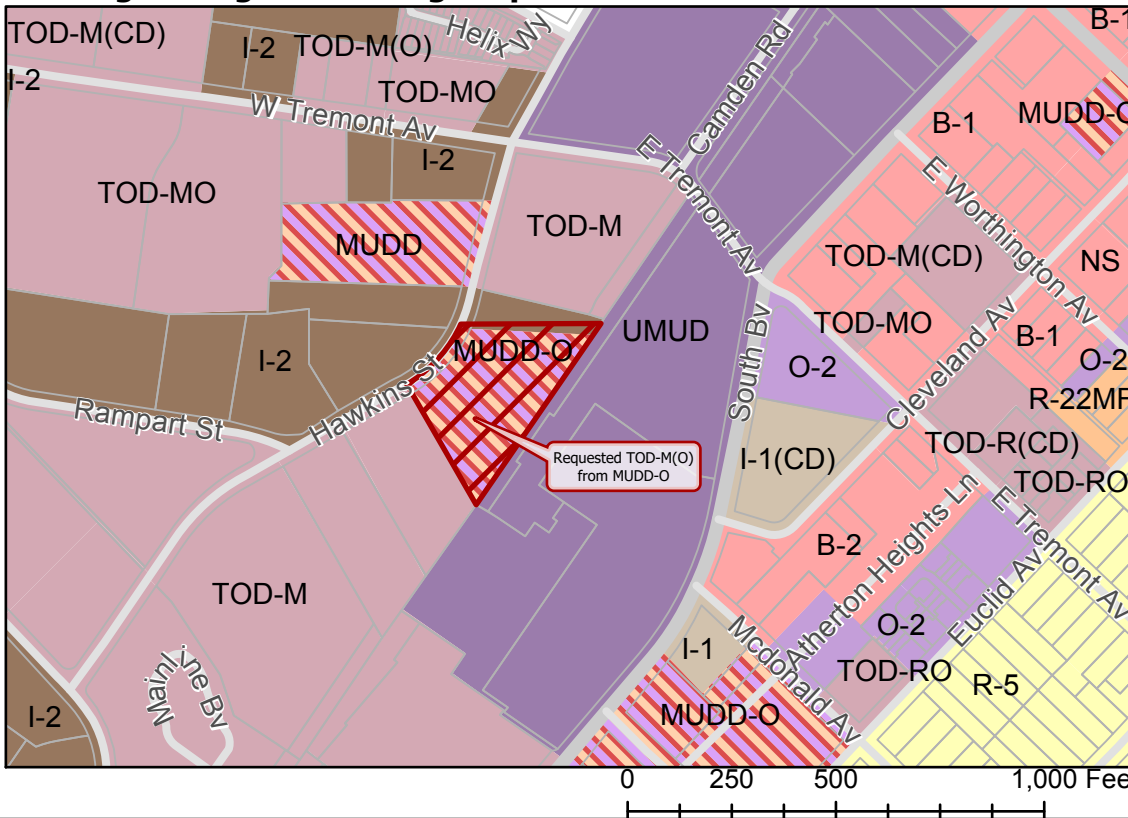
Rezoning Map



- 2018-144
- Outside City Limits
- Parcel
- LYNX Blue Line
- East Blvd Pedscape Plan
- Historic Districts
- City Council District**
- 3-LaWana Mayfield



Existing Zoning & Rezoning Request



- Requested TOD-M(O) from MUDD-O
- Zoning Classification**
- Single Family
- Multi-Family
- Office
- Business
- Uptown Mixed Use
- Light Industrial
- General Industrial
- Mixed Use
- Transit-Oriented



Map Created 12/11/2018