

**2019-014 : Mission Properties**

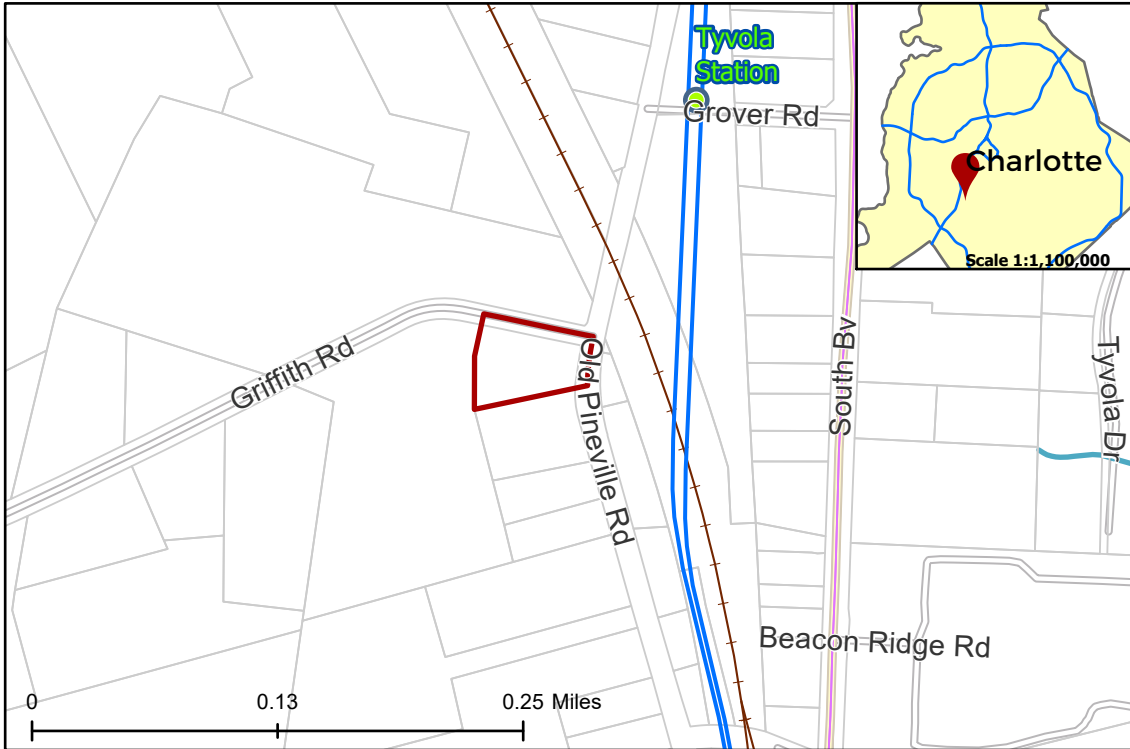
**Current Zoning** I-2 (General Industrial)

**Requested Zoning** TOD-M(CD) (Transit Oriented Development-Mixed Use, Conditional)

Approximately 1.06 acres

**Location of Requested Rezoning**

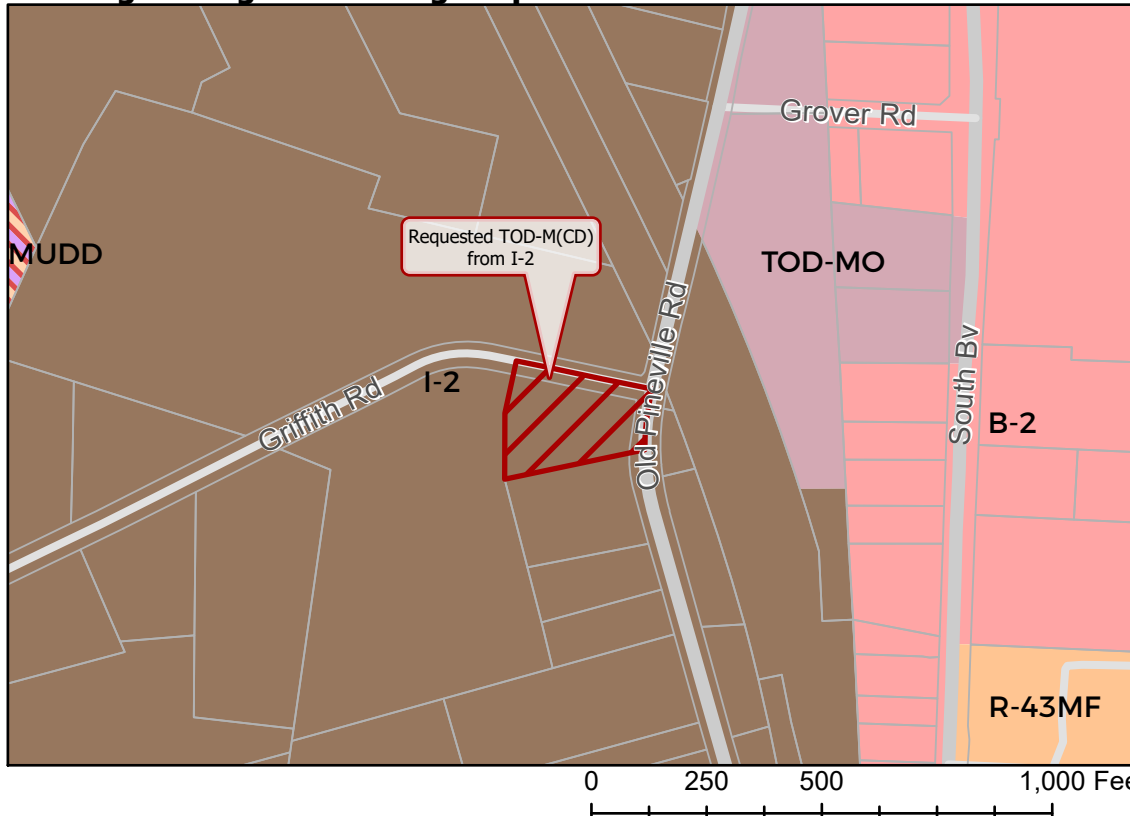
**Rezoning Map**



- 2019-014
- Inside City Limits
- Parcel
- LYNX Blue Line Station
- LYNX Blue Line
- Railway
- Streams
- City Council District
- 3-LaWana Mayfield



**Existing Zoning & Rezoning Request**



- Requested TOD-M(CD) from I-2
- Zoning Classification**
- Multi-Family
- Business
- General Industrial
- Mixed Use
- Transit-Oriented



Map Created 3/13/2019