

**2019-076 : Hopper Communities**

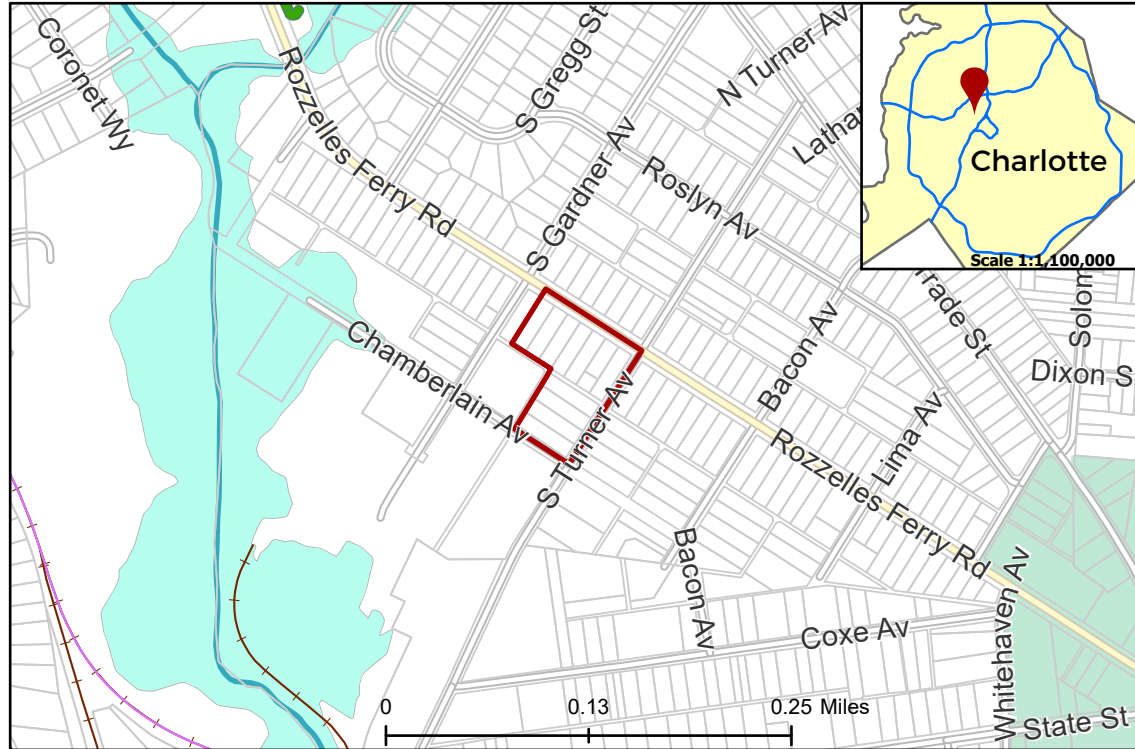
**Current Zoning** R-8 (Single Family Residential)  
**Requested Zoning** UR-2(CD) (Urban Residential, Conditional)

Approximately 2.39 acres

**Rezoning Map**



**Location of Requested Rezoning**

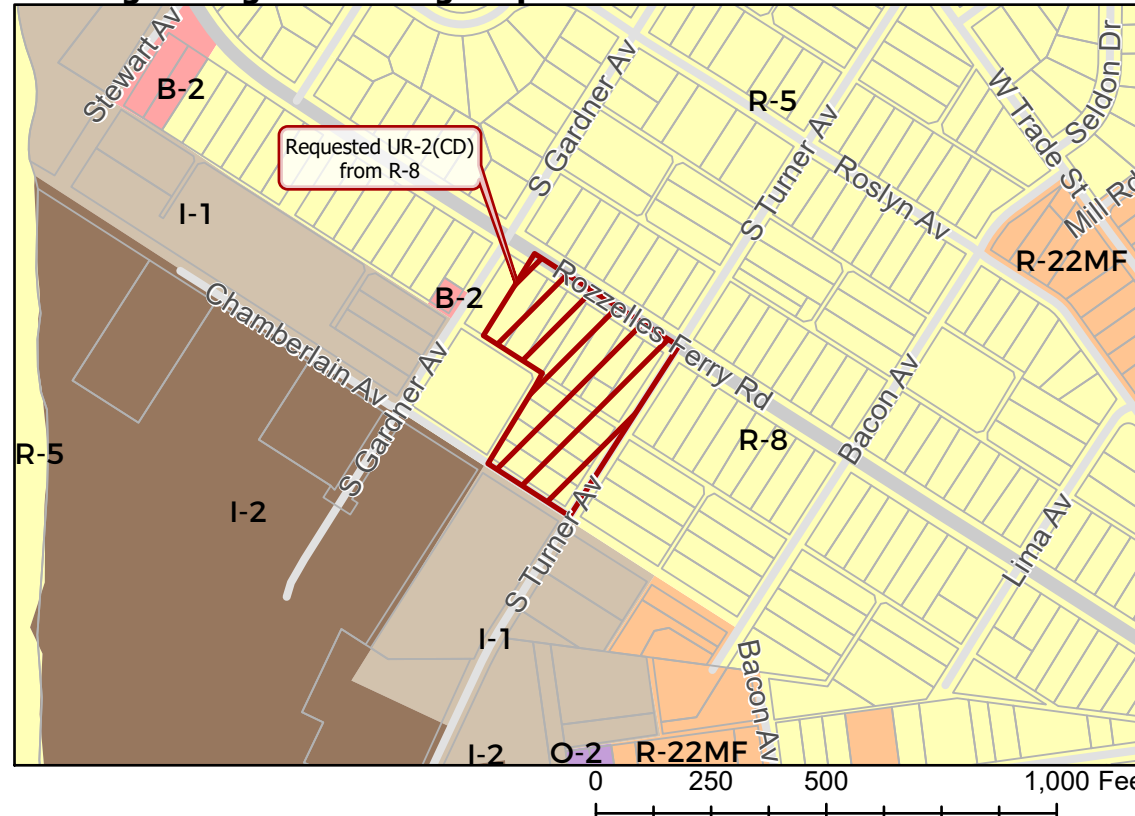


- 2019-076
- Inside City Limits
- Parcel
- Greenway
- Railway
- Streams
- FEMA Flood Plain
- West End Land Use and Pedscape

**City Council District**  
 2-Justin Harlow



**Existing Zoning & Rezoning Request**



Requested UR-2(CD) from R-8

**Zoning Classification**

- Single Family
- Multi-Family
- Office
- Business
- Light Industrial
- General Industrial



Map Created 6/26/2019