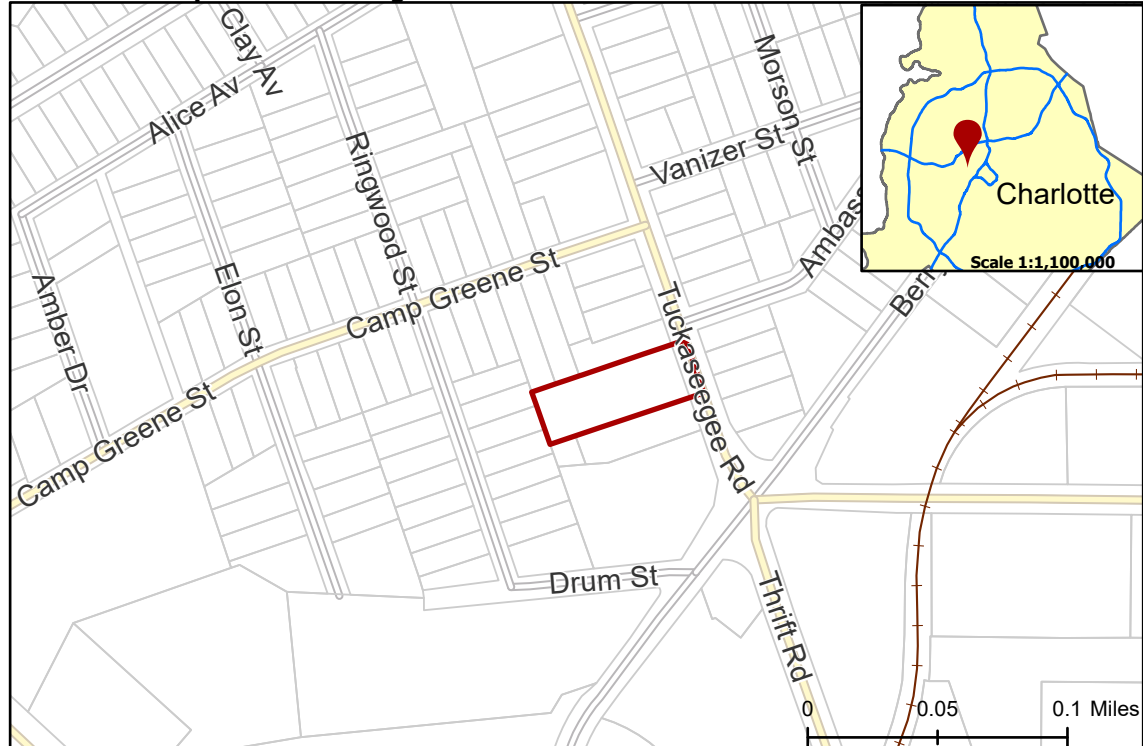


2020-157: Specialty Properties LLC

Current Zoning B-1 (Neighborhood Business), R-5 (Single Family Residential)
Requested Zoning NS (Neighborhood Services)

Approximately 0.766 acres
Location of Requested Rezoning



Rezoning Map

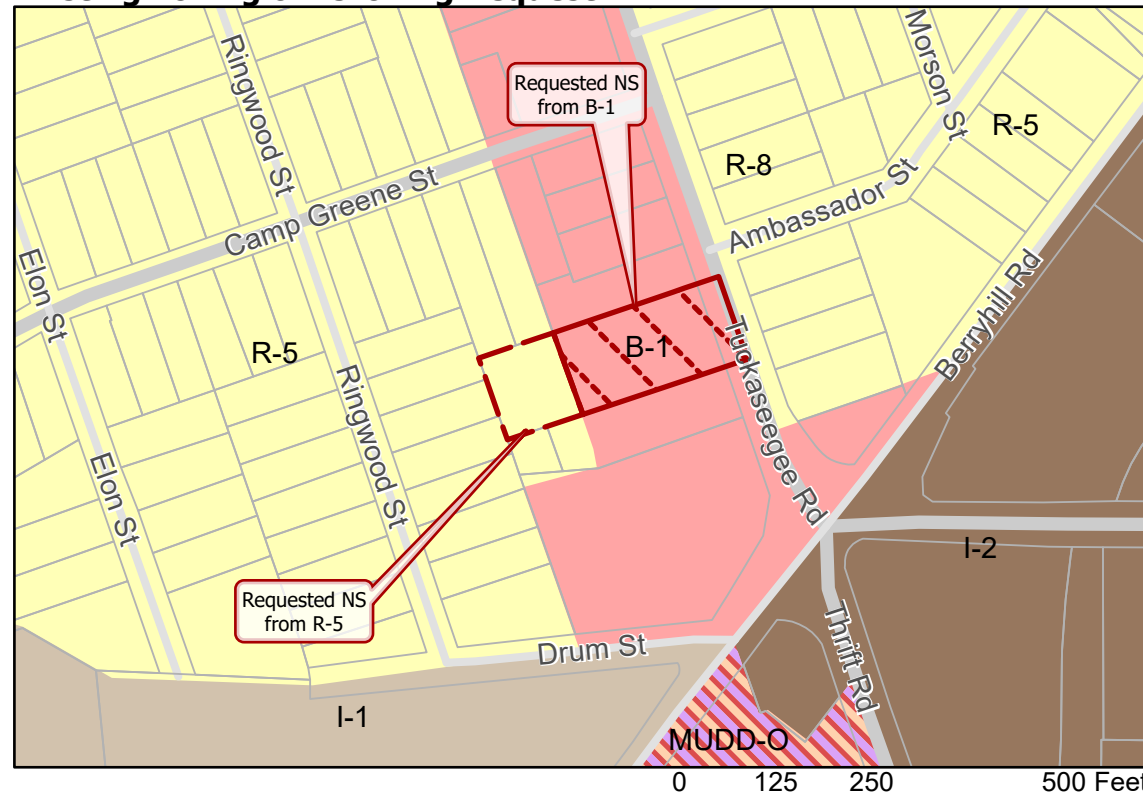


- 2020-157
- Inside City Limits
- Parcel
- Railway

City Council District
 3-Victoria Watlington



Existing Zoning & Rezoning Request



- Requested NS from R-5
 - Requested NS from B-1
- Zoning Classification**
- Single Family
 - Business
 - Light Industrial
 - General Industrial
 - Mixed Use

N
 Map Created 10/19/2020