

# 2021-066: TE Wash Holdings, LLC and ROC Wash Holdings, LLC

# Rezoning Map

**Current Zoning** B-2(CD) (General Business, Conditional)

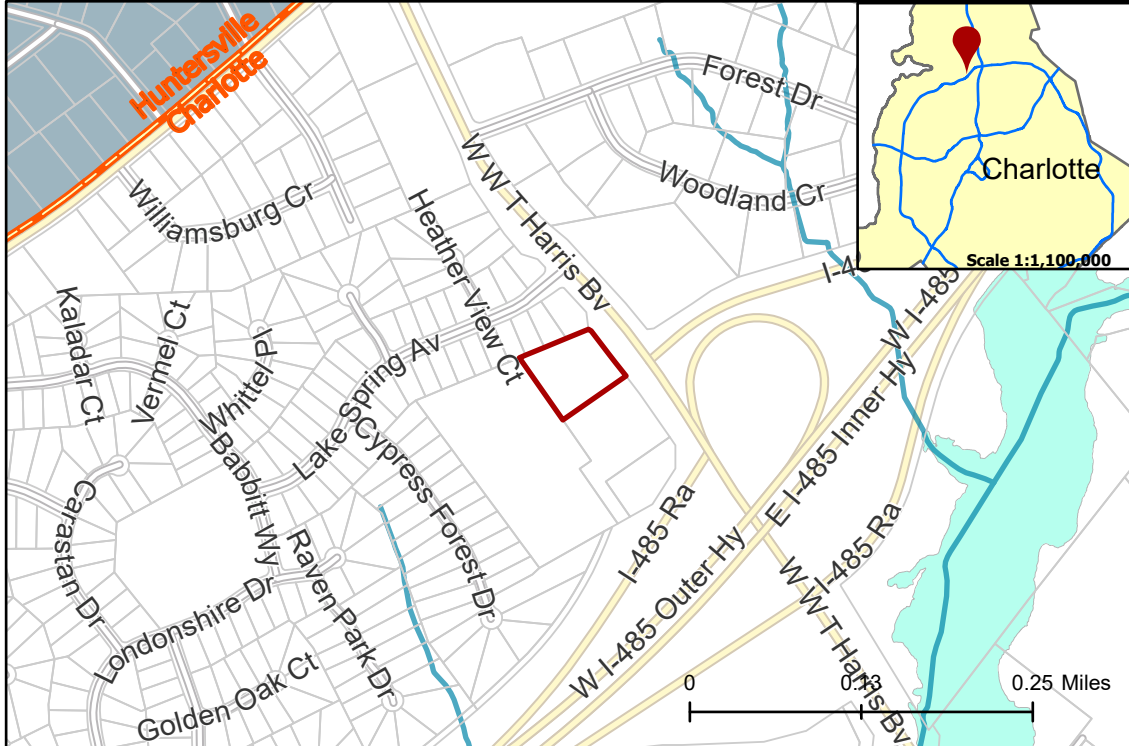
**Requested Zoning** B-2(CD) SPA (General Business, Conditional, Site Plan Amendment)



**CHARLOTTE**  
PLANNING, DESIGN  
& DEVELOPMENT

Approximately 1.735 acres

## Location of Requested Rezoning



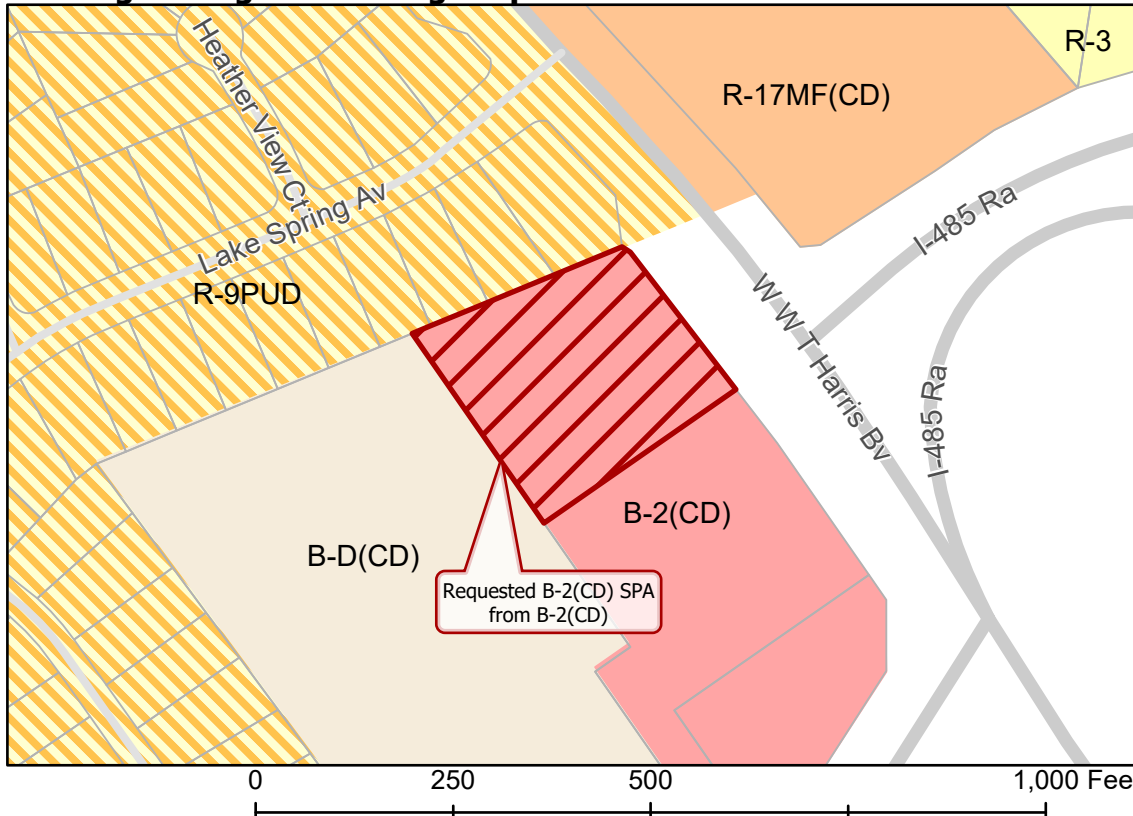
- 2021-066
- Inside City Limits
- Parcel
- Streams
- FEMA Flood Plain
- Mtn. Island lake - Critical Area

## City Council District

- 2-Malcolm Graham



## Existing Zoning & Rezoning Request



- Requested B-2(CD) SPA from B-2(CD)

## Zoning Classification

- Single Family
- Multi-Family
- Mixed Residential
- Business
- Business-Distribution



Map Created 4/27/2021