

# 2021-077: Lucern Capital Partners

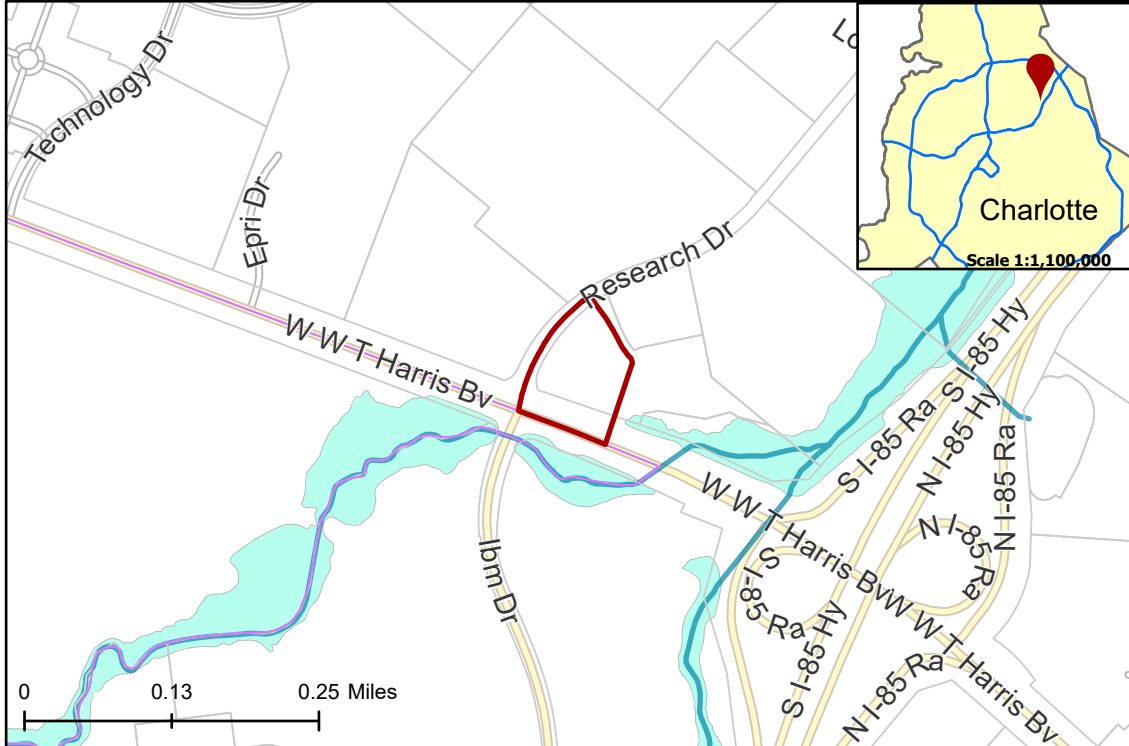
# Rezoning Map

**Current Zoning** B-1(CD) (Neighborhood Business, Conditional)  
**Requested Zoning** RE-3(CD) (Research, Conditional)



Approximately 3.07 acres

## Location of Requested Rezoning



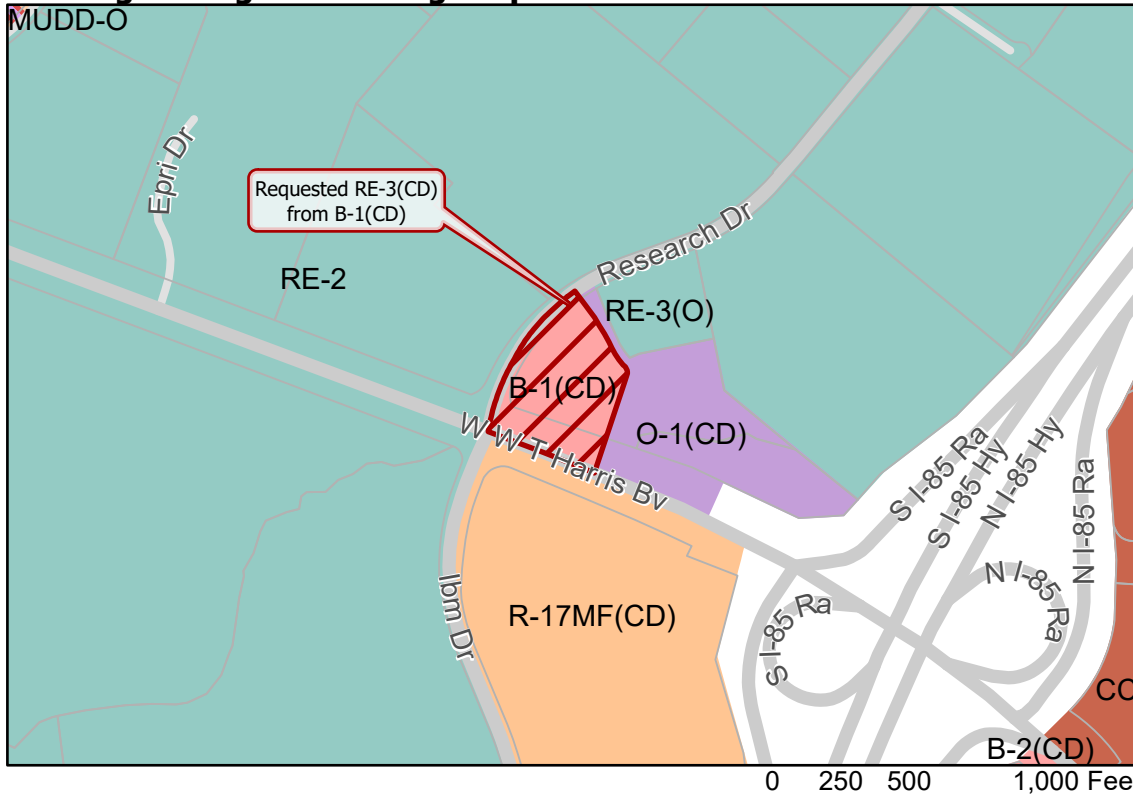
- 2021-077
- Inside City Limits
- Parcel
- Streams
- FEMA Flood Plain

## City Council District

- 4-Renee Perkins-Johnson



## Existing Zoning & Rezoning Request



- Requested RE-3(CD) from B-1(CD)

## Zoning Classification

- Multi-Family
- Research
- Office
- Business
- Commercial Center
- Mixed Use



Map Created 7/9/2021