

# 2021-168: Station West, LLC

# Rezoning Map

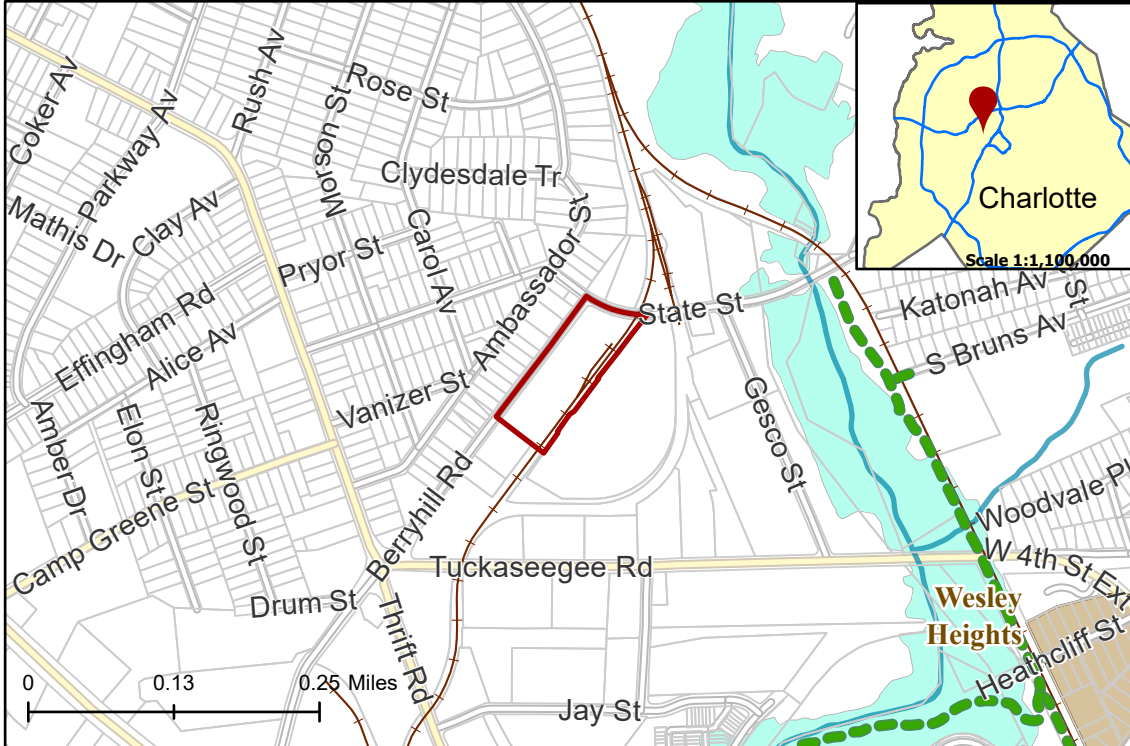
**Current Zoning** I-2 (General Industrial)

**Requested Zoning** MUDD-O (Mixed Use Development District, Optional)



Approximately 3.833 acres

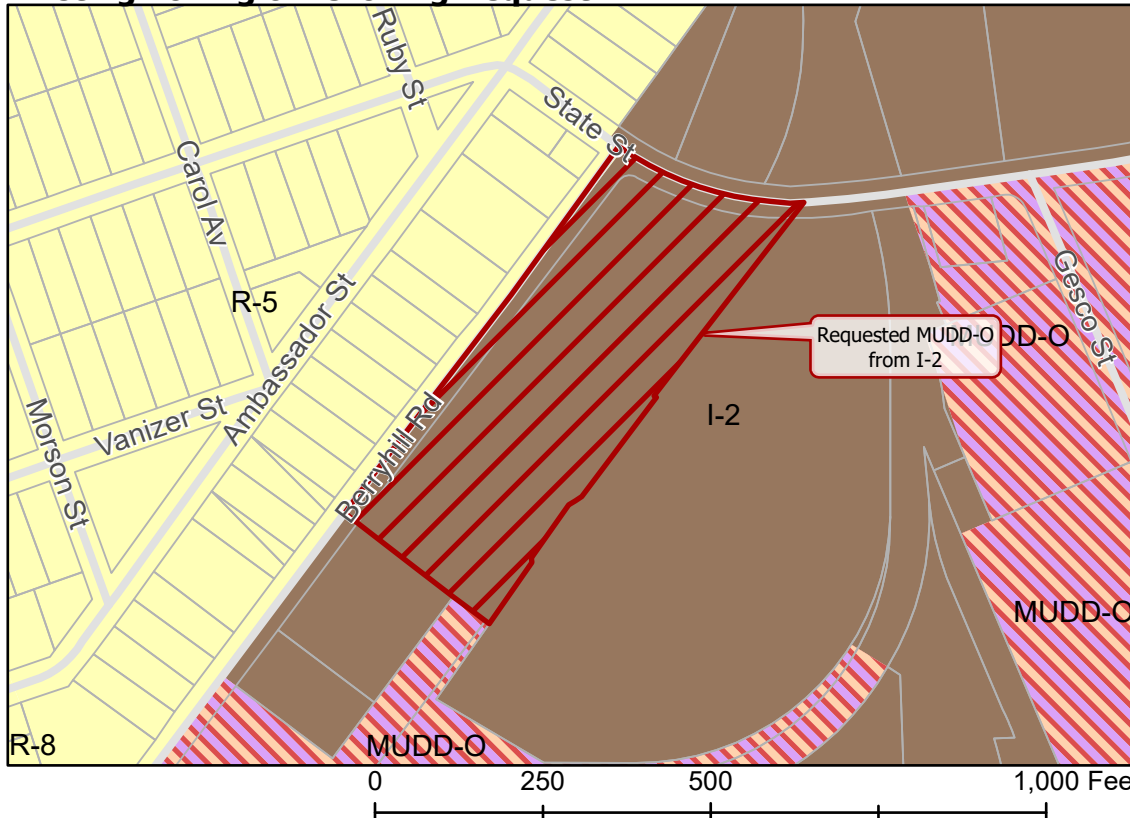
## Location of Requested Rezoning



- 2021-168
- Inside City Limits
- Parcel
- Greenway
- Railway
- Streams
- FEMA Flood Plain
- Historic Districts
- City Council District**
- 2-Malcolm Graham



## Existing Zoning & Rezoning Request



- Requested MUDD-O from I-2
- Zoning Classification**
- Single Family
- General Industrial
- Mixed Use



Map Created 4/20/2022