

# 2022-192: Ascent Real Estate Capital, LLC

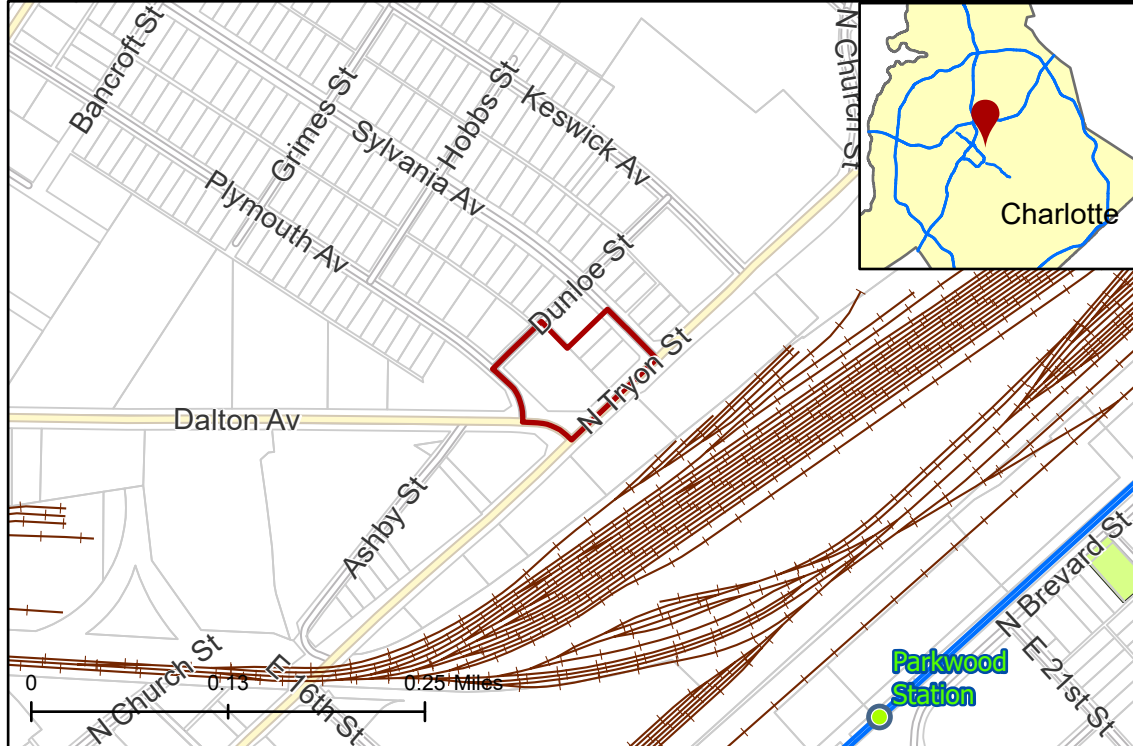
# Rezoning Map

**Current Zoning** ML-2 (General Industrial)  
**Requested Zoning** MUDD(CD) (Mixed Use Development District, Conditional)



Approximately 2.0 acres

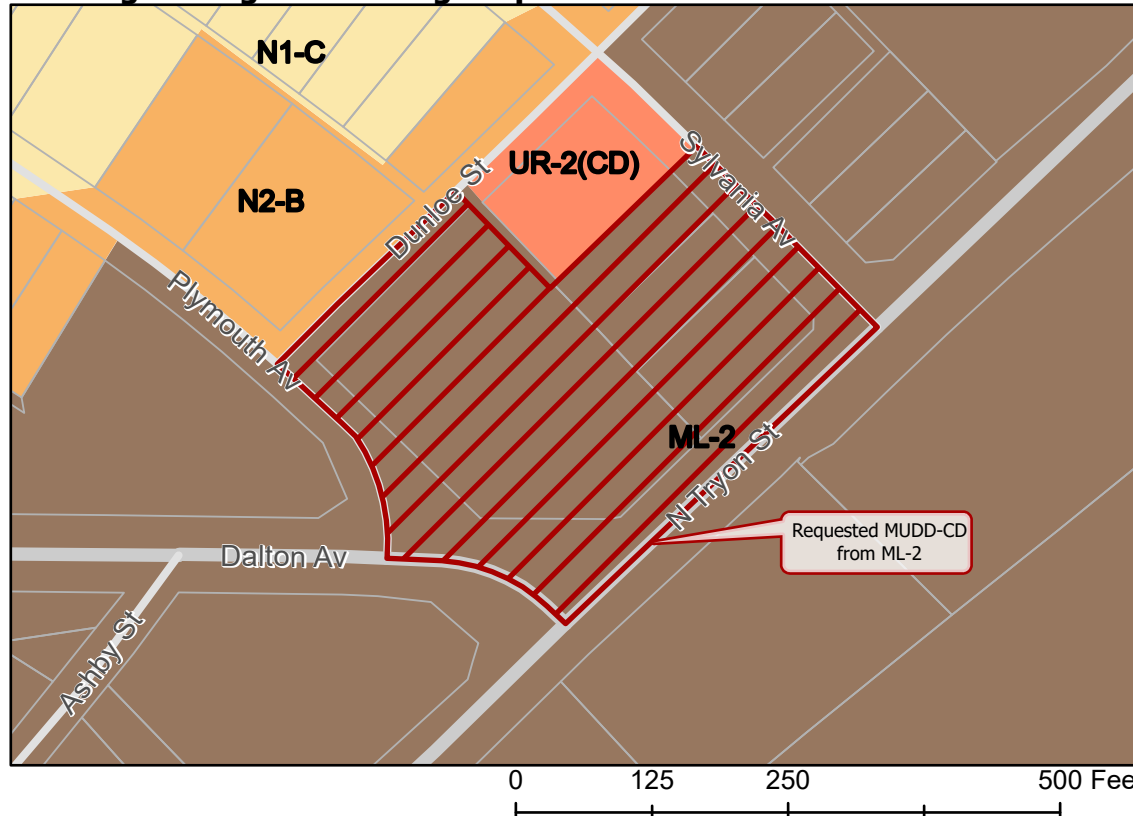
## Location of Requested Rezoning



- 2022-192
- Inside City Limits
- Parcel
- LYNX Blue Line Station
- LYNX Blue Line
- Railway
- Transit Supportive Overlay
- City Council District
- 1-Dante Anderson



## Existing Zoning & Rezoning Request



- Requested MUDD-CD from ML-2
- Zoning Classification
- Neighborhood 1
- Neighborhood 2
- Urban Residential
- General Industrial

